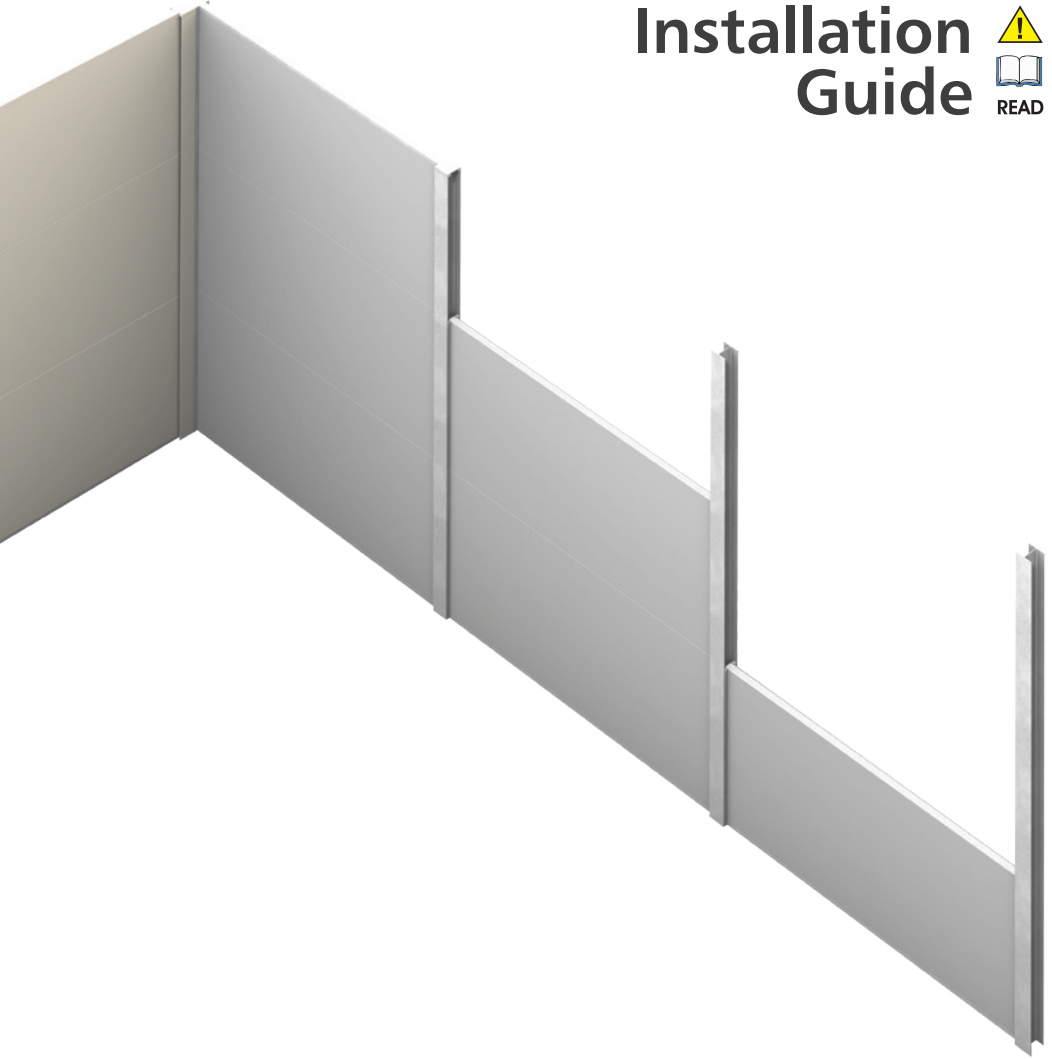


Installation Guide



DunewallTM
COMMERCIAL ACOUSTIC WALLS

Warnings

These warnings must be read and understood by all personnel who will be installing a Wallmark product.

SITE SAFETY

- It is the installers responsibility for site safety.
- The installer must wear/use appropriate safety equipment at all times.
- No person should lift a wall panel alone.
- Care should be taken at all times when using power tools to prevent serious injury.
- Extra caution should be taken at all times when handling any posts, wall capping, insert panels or slats, as the metal edges are sharp and will cut. This includes the assembly of the wall panels and the exposure to the unprotected post tops.
- Holes in the ground should never be left uncovered.

PRODUCT

- The edges of the wall panels are fragile until assembled – care should be taken not to drop or bump the panel edges.
- The posts must be assembled with the larger leg outside the shorter leg on the opposite half. Failure to do so may result in the post caps not fitting.

INSTALLATION

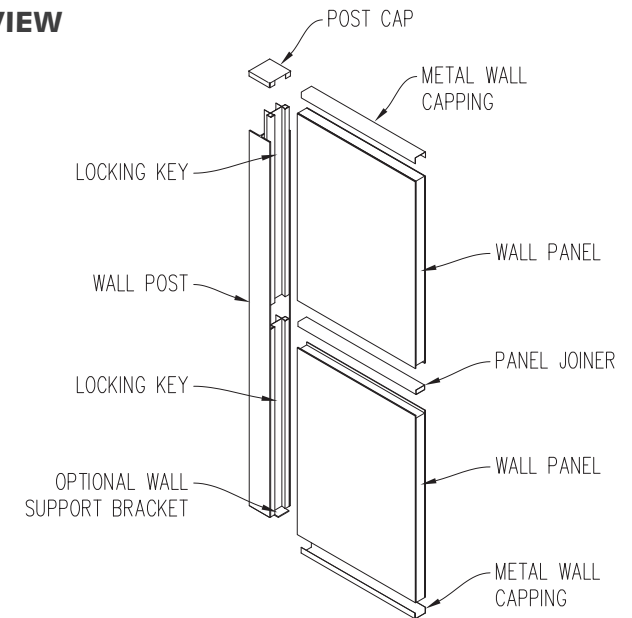
- Wallmark will take no responsibility for incorrect information supplied by the customer.
- The customer takes responsibility for all information on the installation drawings used.
- The posts must be installed and concreted correctly in accordance with the engineering specifications supplied by Wallmark. Failure to comply will void any and all warranties offered by Wallmark.
- If / where a panel cut width is specified on the installation drawing, the installer will accurately measure between the posts and check the measurement before cutting the panel.

FINISHING

- The wall panels must be coated within 30 days of install.
- The wall panels must be dry and dust free before coating.
- All metal posts, wall capping and post capping surface areas, must be lightly scoured with a scouring pad to ensure correct and maximum adhesion of the paint or render.
- Paint must be applied as per specified square meters per litre.

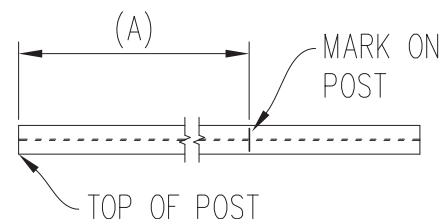
Post Installation

EXPLODED VIEW



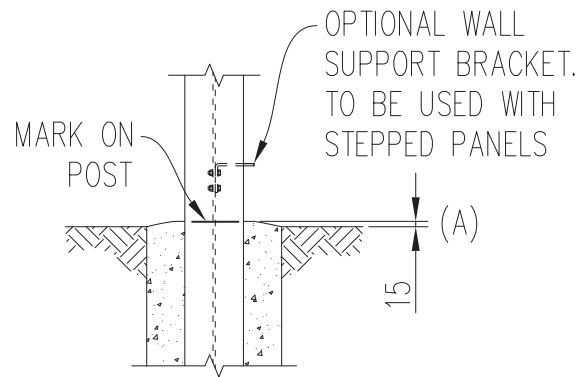
STEP 1 Drill holes in ground to the dimension specifications on supplied detail drawings.

STEP 2 Measure from the top and mark a line (A) on each post where the bottom of the panels will rest. Add an extra allowance for metal wall cappings and panel joiners. As a guide – any wall less than 2400mm high, add 5mm. Any wall over this height, add 10mm. (eg. For a 3600mm high wall, the line would be 3610mm from the top of the post).



Post Installation

STEP 3 Place a post in the hole you are starting from. Concrete this post in ensuring it is vertical (level both ways). Set the mark on the post (A) at the height you would like the bottom of the panels to finish. We recommend the panels rest approx 15mm above the ground to allow for water clearance and no direct soil contact. Build the concrete footing up to your mark on the post. Allow to set. (Important note – if you are using any wall support brackets, these must be bolted to the post before placing into the hole).

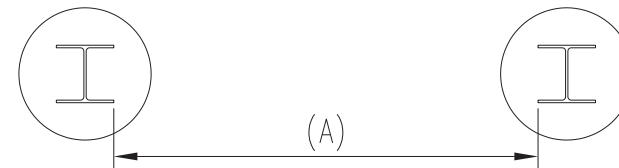


STEP 4 Place all other posts in the holes and run a string line from the corner / starter post. As each post is concreted in, level it both ways and set the mark on the post in line with the string line. Tip – It may be possible to pour the concrete footings to ground level (below the mark on the post) and build up to the line by hand with grout later, to ensure accuracy. We recommend setting the post distance apart (between internal edges of web) at approx 100mm shorter than the panel length you are using. This means that every panel will have a small amount cut from one end to make them fit later. Panels are easily cut with a handsaw or circular saw. If you wish to set the post distance apart to prevent cutting all panels, the distances between the posts must be very accurate and the posts must not lean either way. Allow all concrete to set over night

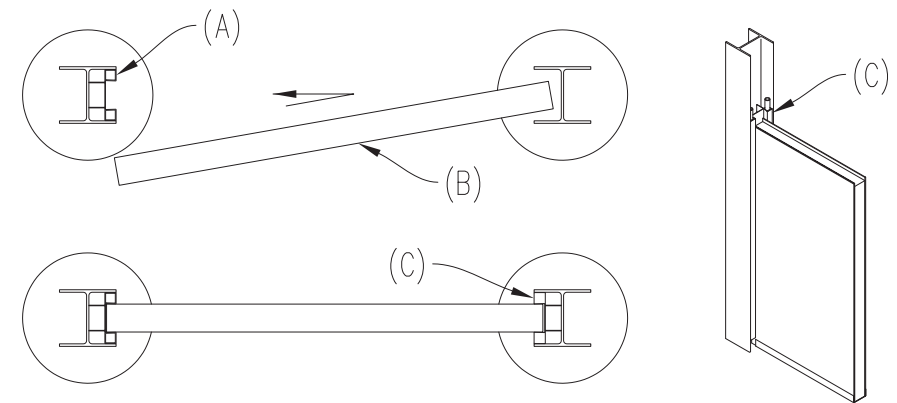
Panel Installation

STEP 1 For the first lower panel, cut the metal wall capping supplied to fit between the posts (faces of the two locking keys when in place). See (A).

STEP 2 Measure between the internal faces of the posts (A) and add the depth of the locking key both sides. If the panel does not fit, cut it shorter using either a hand or power saw. Fit the metal capping to the bottom of the panel.

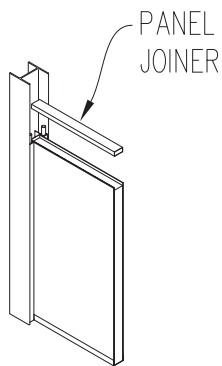


STEP 3 Ensure the locking key is the same height as the panel. Place one locking key into the post on one side (A). Push the panel into the open post web (on the other side) and slide the panel back into the key (B). Insert the second locking key to secure the panel (C).

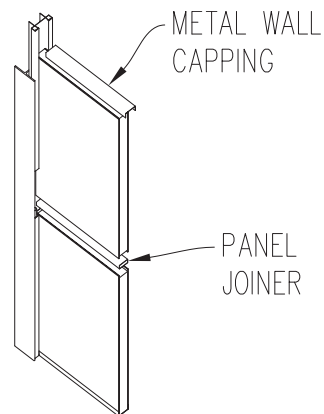


Panel Installation

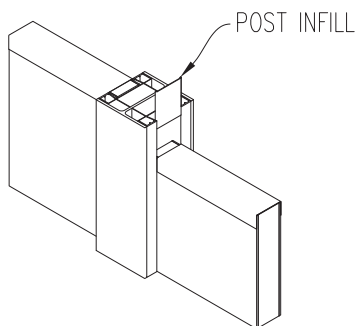
STEP 4 Drop in the panel joiner supplied, cutting to length if required. (Note - if rebated panels have been supplied, the single rebate must be used as the lowest and highest panels and the double rebate as middle panels only).



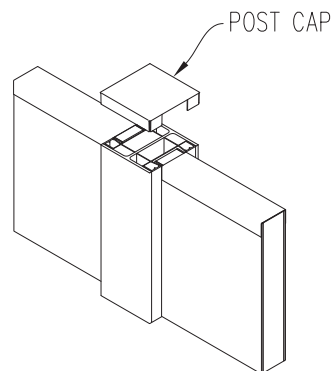
STEP 5 Build the wall from ground up, adding a joiner between each panel. When complete, cut the metal wall capping left over and fasten to the top of the wall using construction adhesive.



STEP 6 Cut and insert infills to hide any gaps if required.



STEP 7 Fix on the post caps. Paint the wall as per following instructions.



Wall Finish

The wall panels must be coated within 30 days of install.

All posts and capping must be lightly scoured with an abrasive pad before any coatings are applied. This is to ensure a proper adhesion of the paint to these surfaces.

WALLMARK SMOOTH (Given the nature of the wall panel surface, a smooth finish can show up some natural irregularities)

Preparation - Thoroughly clean the panels to provide a surface free of contaminants. Surface must be dry to touch and in appearance. Check there are no scratches, dents or markings on the wall.

1st Coat - Roll on Wallmark Primer Coat at a rate of 7 square metres per litre (or 140 mls per square metre). Allow to touch dry (normally two hours) Paint may also be sprayed or brushed.

2nd Coat - Roll on Wallmark Final Coat to colour at a rate of 6 square metres per litre (or 170 mls per square metre). Allow to touch dry (normally two hours). Application must be smooth and even. Thin with fresh water as required. Short nap lint free roller is recommended. Paint may also be sprayed or brushed.

3rd Coat - Roll on Wallmark Final Coat to colour at a rate of 6 square metres per litre (or 170 mls per square metre). Allow to touch dry (normally two hours). Application must be smooth and even. Thin with fresh water as required. Short nap lint free roller is recommended. Paint may also be sprayed or brushed.

WALLMARK ROLL/SPRAY-ON TEXTURE

(Special paint roller type or spray gun required)

Preparation - Thoroughly clean the panels to provide a surface free of contaminants. Surface must be dry to touch and in appearance.

1st Coat - Roll/Spray Wallmark Primer Coat at a rate of 7 square metres per litre (or 140 mls per square metre) using a standard roller/spray gun. Allow to touch dry (normally two hours) Paint may also be brushed.

2nd Coat - Roll/Spray Wallmark Texture Coat to colour using a medium texture roller or Hopper gun, at a rate of 2 square metres per litre (or 500 mls per square metre). It is essential that this coat is applied with a consistent technique. Invariably, the sun and heat will affect the texture achieved, so we recommend planning to apply this coating in early morning wherever possible.

3rd Coat - Roll/Spray Wallmark Final Coat to colour at a rate of 6 square metres per litre (or 170 mls per square metre) Paint may also be brushed.

WALLMARK ANTI GRAFFITI (Sacrificial clear coat)

Roll, spray or brush over the Wallmark Final Coat at a rate of 6 square metres per litre (or 170 mls per square metre). Allow to touch dry (normally two hours).

WALLMARK BARRIERCOAT (For in-ground/soil retaining applications)

Preparation - Thoroughly clean the panels to provide a surface free of contaminants. Surface must be dry to touch and appearance.

1st Coat - Roll on Wallmark Barriercoat at a rate of 5 square metres per litre (or 200 mls per square metre). Allow to touch dry (normally four hours)

2nd Coat - Roll on Wallmark Barriercoat at a rate of 5 square metres per litre (or 200 mls per square metre).



Warranty

WALLMARK PTY LTD ('Wallmark') warrants that for a period of ten (10) years from the date of construction of any wall panel that the panels will not:-

- Delaminate due to faulty glue; and
- Will maintain their structural integrity.

Wallmark warrant that they will resupply wall panels for any area that is proven to the satisfaction of Wallmark to have failed to comply with the terms of the above warranty provided that the warranty shall not apply if:-

- Wallmark's directions and specifications in relation to the use, application and construction of the wall panel surface has not been followed strictly;
- The default is of minor cosmetic nature only such as fading, crazing or discoloration;
- The failure of structural integrity or delamination is as a result of normal wear and tear, vandalism, negligence, third party acts, improper installation with engineering specifications, chemical abrasion, chemical contamination, explosion, pest, fire, act of God or circumstances reasonably beyond the control of Wallmark;
- The products have been tampered with or altered or modified by a person not approved by Wallmark or have been installed contrary to specifications;
- The product is used in an area where it is exposed to salt or the elements contrary to the specifications provided by Wallmark;
- The purchaser did not, within fourteen (14) days of discovery of the defect or defects give written notice to the Wallmark supplier and provide proof of purchase including but not limited to product serial number or original invoice and facilitate Wallmark or their authorised officer attending at the property to inspect the damage.

Wallmark will, in accordance with the warranty provided herein, at their sole election replace or repair part or parts of the material within their sole discretion to be found to be defective provided that there shall be no obligation upon Wallmark to pay the costs of removal or installation of the defective parts nor pay the transportation costs related with the return of the defective part or parts.



**Call 1300 925 562 and talk to
your nearest manufacturer**

www.wallmark.com.au