



RESIDENTIAL

Acoustic and Feature Fencing

COMMERCIAL

Noise Barriers



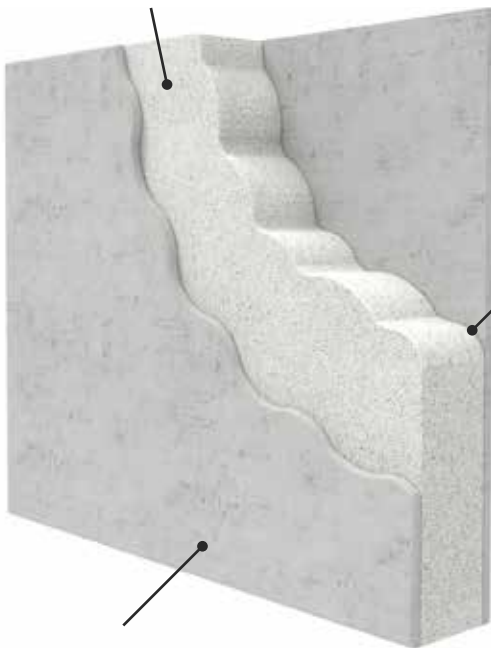
Welcome to Wallmark

Wallmark specialises in modular acoustic panel fencing and noise barrier solutions for residential, commercial and industrial applications. We produce a range of innovative, economical and stylish wall systems that are designed for Australian conditions, manufactured from quality materials, and fast to install.

Choose between our steel Techniko, Dunewall, Urbanwall and aluminium Evowall product ranges, to satisfy your current requirements and can be enhanced to suit any application from residential to heavy industry. Our sound reducing wall panels are finished with a weather resistant, hard wearing, smooth surface with no gaps. Spray, roll or brush the wall to your own pleasing colour and texture. The walls have been pre-engineered to suit a variety of wind regions including height, footing sizes and post spacings. Installation is easy - drill or dig a row of holes, concrete the posts in and assemble your wall with minimal site disruption to achieve a solid prestige result!

The Panel Core

- Termite resistant
- Superb compressive strength to weight ratio
- Absorbs minimal water - no mould or rotting
- Treated with Fire Retardant



The Panel Bond

- Full surface contact adhesion
- High grade Polyurethane glue

The Panel Outer

- Fire resistant & non-combustible
- Strong, impact resistant surface
- Smooth finish - easy to apply paint or render
- Maintenance Free

Mass: 15kg/m²

Thickness: 75mm

Panel Height: 900 or 1200mm

Length: up to 3000mm

Acoustic Rating: Rw 28

Wind Region Rating: to C3

Warranty: up to 10 years

The Quiet Advantage

Our wall panels are constructed from a very strong composite combination of Fibre Cement sheeting surrounding an Expanded Polystyrene core, creating excellent sound deadening properties. Wallmark has had a complete wall section tested correctly and certified to AS 1191-2002. Testing data sheets and our RMIT Transmission Loss Sound Report are available on request. The panels can be easily cut or shaped on site using a circular or hand saw.



Product Range	4
EvoWall	6
UrbanWall	10
Techniko	14
DuneWall	16
Panel Options	20
AcoustX	22
RetainX	23
ZorbX	24
BlazeX	25
StruX	26
Noise	27
Barrier	28
Technical	29
Engineering	30



Product Range

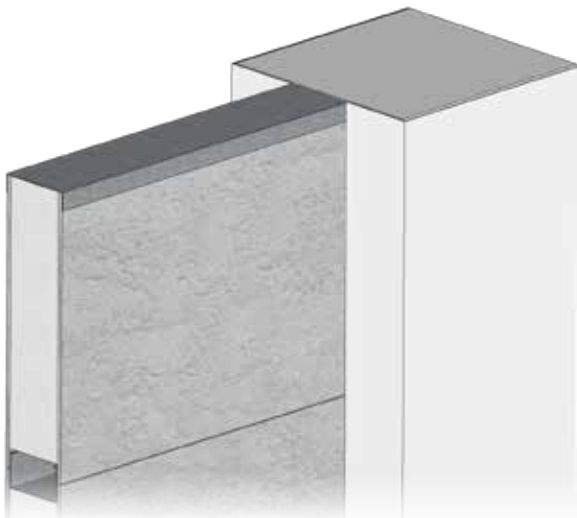
Wallmark Selection Guide	EvoWall	UrbanWall	Techniko	Dunewall
Residential	✓	✓	✓	-
Commercial	✓	✓	✓	✓
Alloy Posts - Pre Primed	✓	-	-	-
Steel Posts - Galvanised Steel	-	✓	✓	✓
Slat Compatible	✓	✓	✓	✓
Maximum Panel Width	3m	3m	2.4m	3m
Pre-engineered to Height	2.4m	3m	3m	12m



EvoWall

SLEEK MODERN PRIVACY WALL
100mm Alloy Post, 75mm Panels

- Cost effective alternative to block walls
- Pre-engineered to 2.4m high
- Quick, hassle free installation
- Superior sound reduction
- No rust - modular alloy design



UrbanWall

MASONRY STYLE FEATURE WALL
240mm Steel Post, 75mm Panels

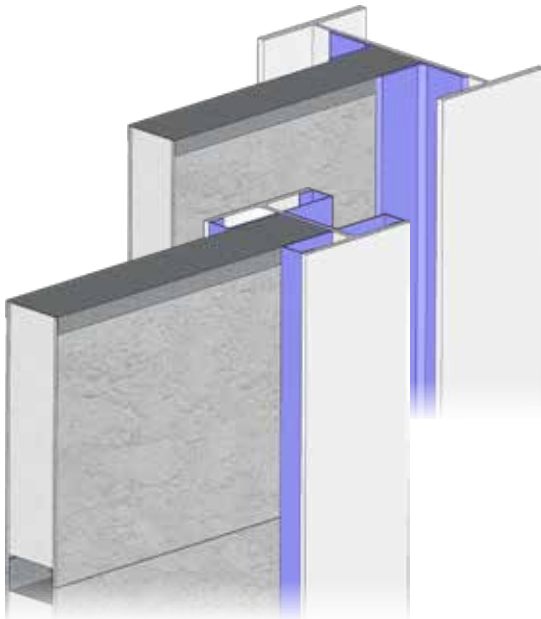
- Cost effective alternative to block walls
- Pre-engineered to 2.7m high
- Quick, hassle free installation
- Real masonry wall style
- Post and wall capping choices



Techniko

MODULAR PANEL FENCE
100mm Galvanised Post | 50mm Panel

- Cost effective alternative to block walls
- Pre-engineered to 3m high
- Durable & Weatherproof
- Superior Acoustic Performance
- Fast & Easy DIY Installation



DuneWall

CUSTOM HEIGHT ACOUSTIC WALL
Pre-engineered Custom Post | 75mm Panel

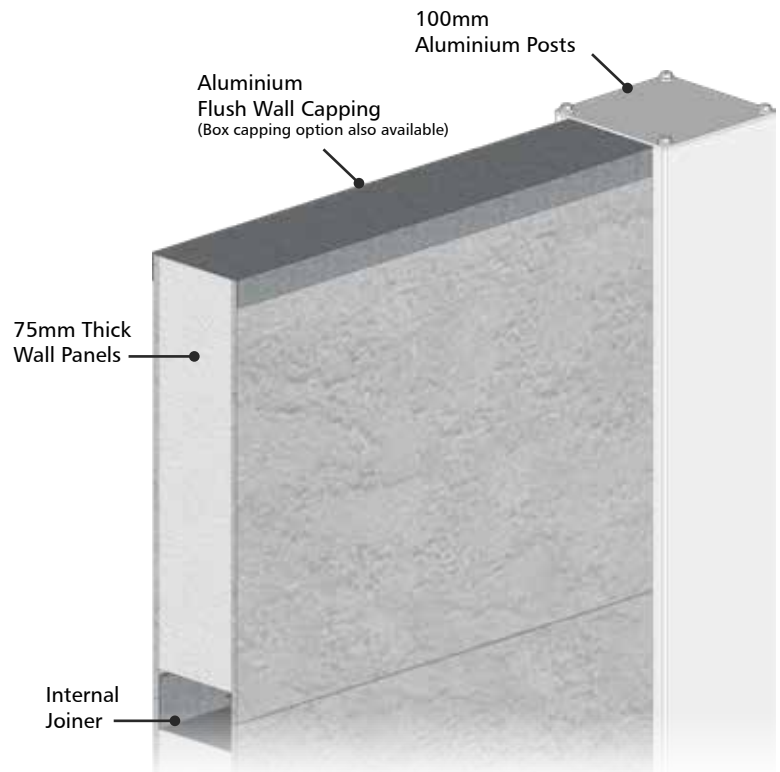
- Cost Effective Alternative To Block & Tilt Wall Systems
- HDG Structural Steel Posts
- Pre-Engineered to 12m high
- Fast Install with Minimal Site Disruption
- Excellent Sound Reduction
- Light Weight Panels
- Looks The Same From Both Sides
- NATA Acoustically Tested and Certified to AS 1191-2002



The EvoWall range of posts have been engineered to suit a variety of wind regions. This includes wall heights up to 2.4m high, footing sizes and post spacings.

Our 100mm posts have been designed as an alternative to our larger sizes.

Assembled View



Features

Excellent Noise Control
Resists Dents & Warping
Superior Corrosion Resistance

Capping Styles



Box Wall Capping
Horizon Post Cap



Flush Wall Capping
Horizon Post Cap



Flush Wall Capping
Plateau Post Cap



Flush Wall Capping
Tableland Post Cap

Modular Slat System

Simple Installation

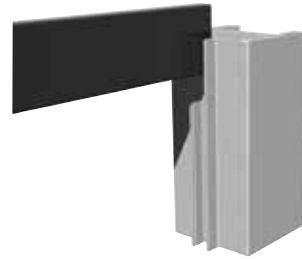
Fits 16mm Slats or Panelling

Easy To Change Spacing

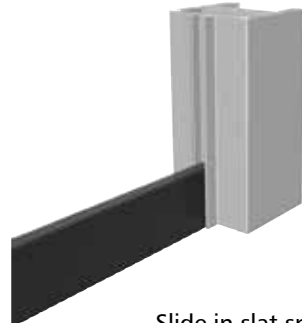
No Spider Traps



Slide in slat infill



Slide in slat



Slide in slat spacer



Repeat to desired height





Modular Panel Fencing

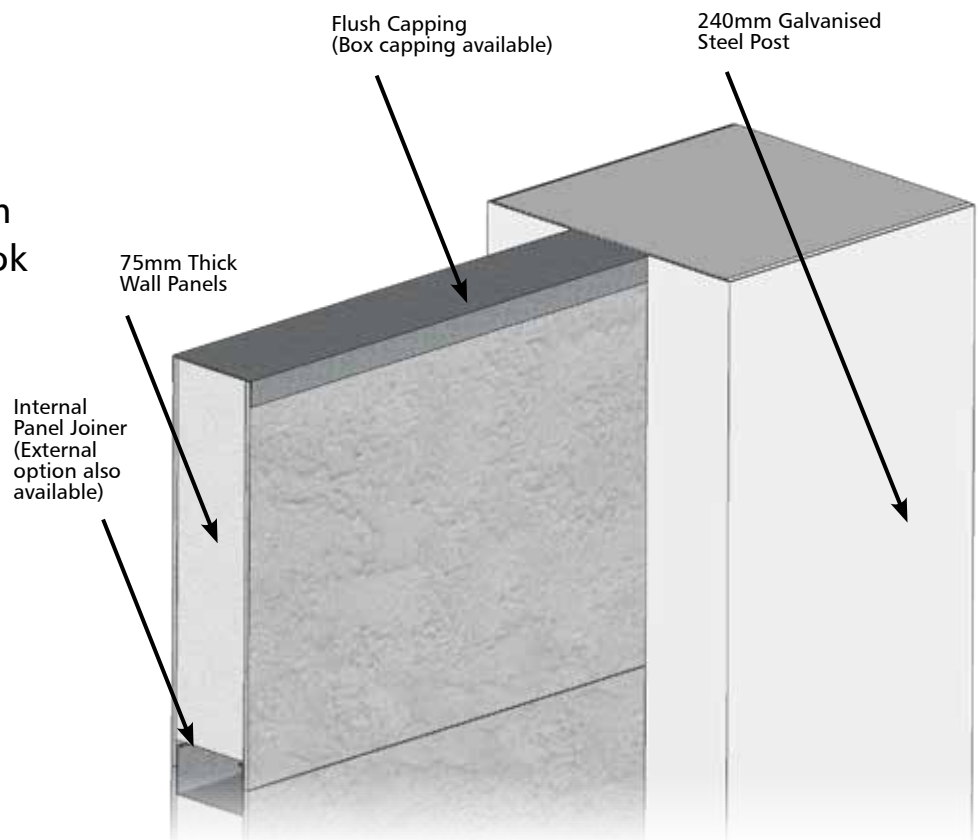
100mm Aluminum Post, 75mm Panels

EvoWall 



Features

Fast, Easy Installation
Large Pillar Style Posts
Custom Design System
Real Masonry Wall Look



Capping Styles



Box Wall Capping
Horizon Post Cap



Flush Wall Capping
Horizon Post Cap

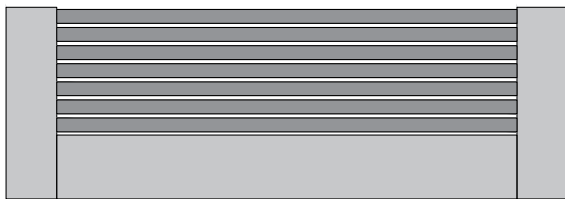


Flush Wall Capping
Plateau Post Cap

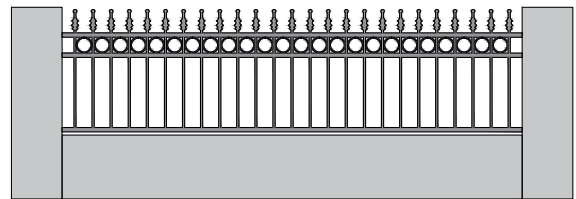


Flush Wall Capping
Tableland Post Cap

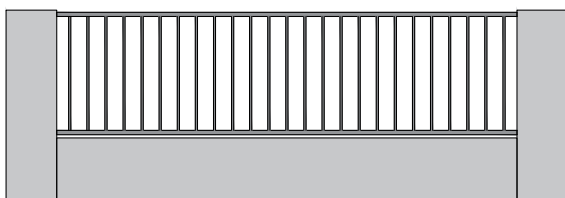
Adaptions



Slat Infill



Classic Infill



Flat Top Infill



Oxley Plain Infill





Modular Panel Fencing

240mm Steel Post, 75mm Panel

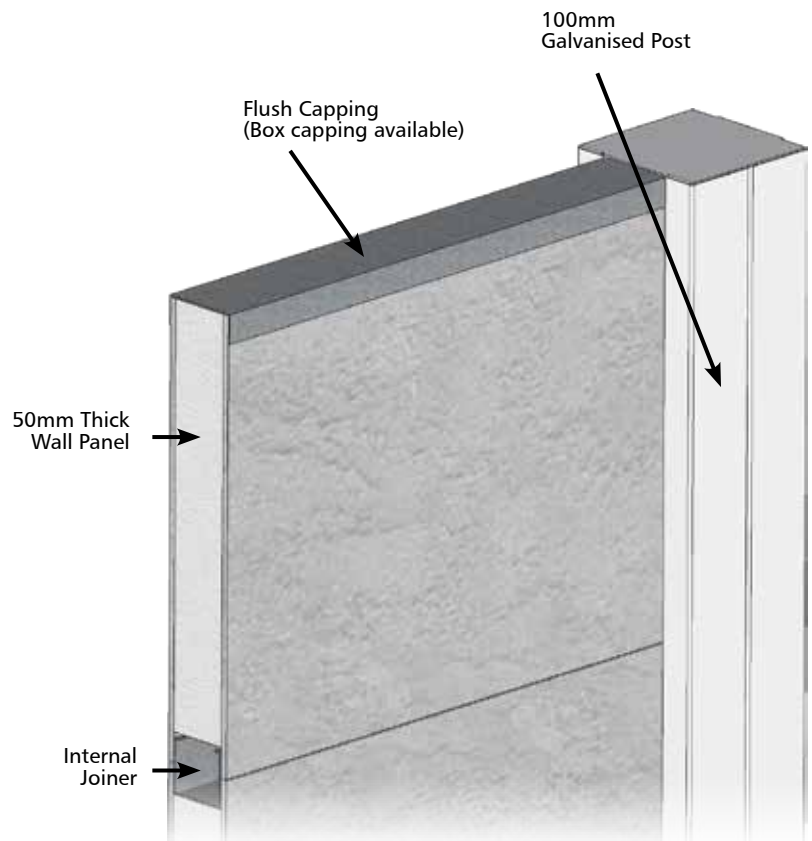
UrbanWall 



Features

Cost effective
Durable & Weatherproof
Superior Acoustic Performance
Fast & Easy DIY Installation

Assembled View



Capping Styles



Box Wall Capping
Horizon Post Cap



Flush Wall Capping
Horizon Post Cap



Flush Wall Capping
Plateau Post Cap

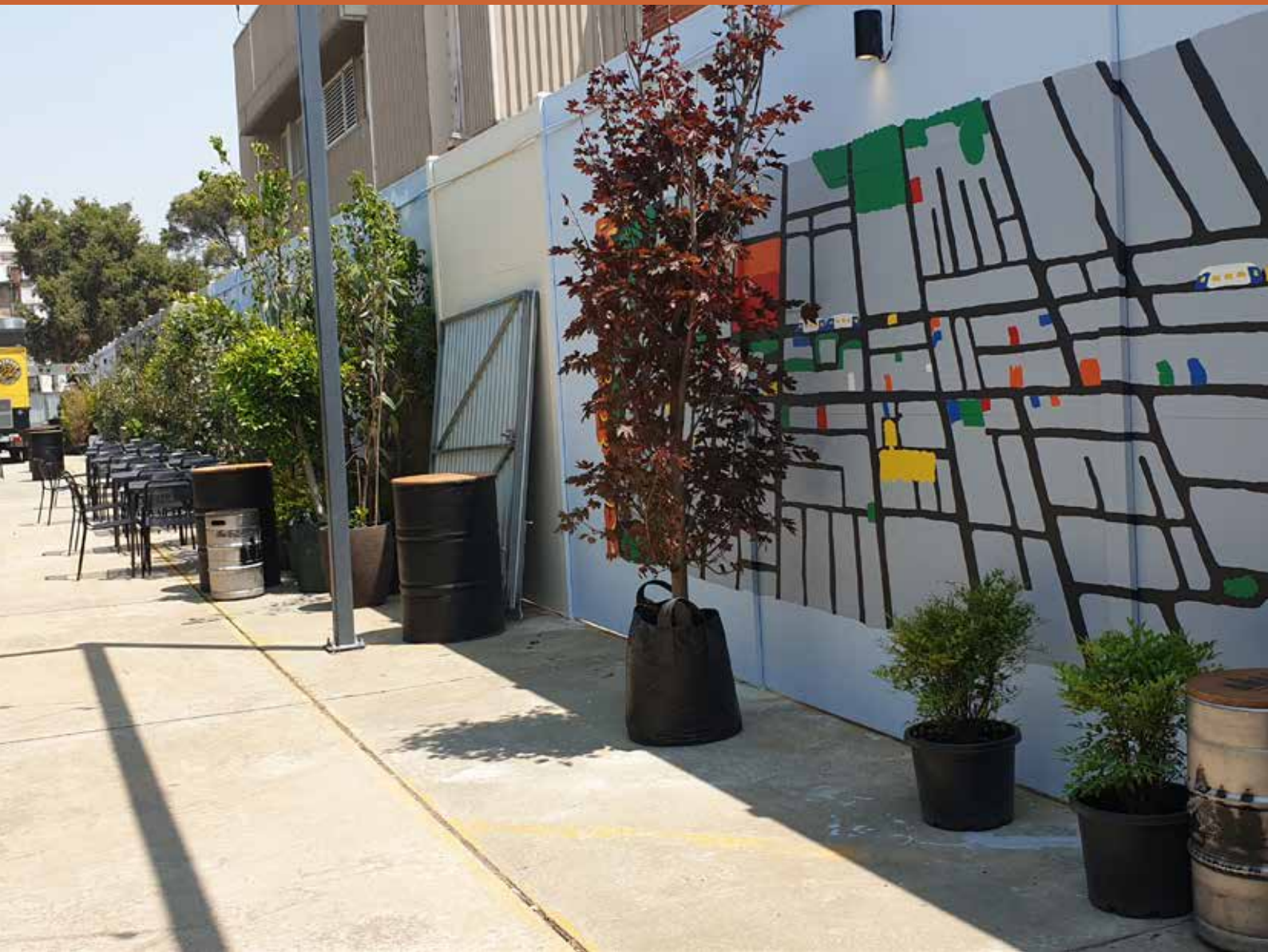


Flush Wall Capping
Tableland Post Cap

Modular Panel Fencing

100mm Galvanised Post

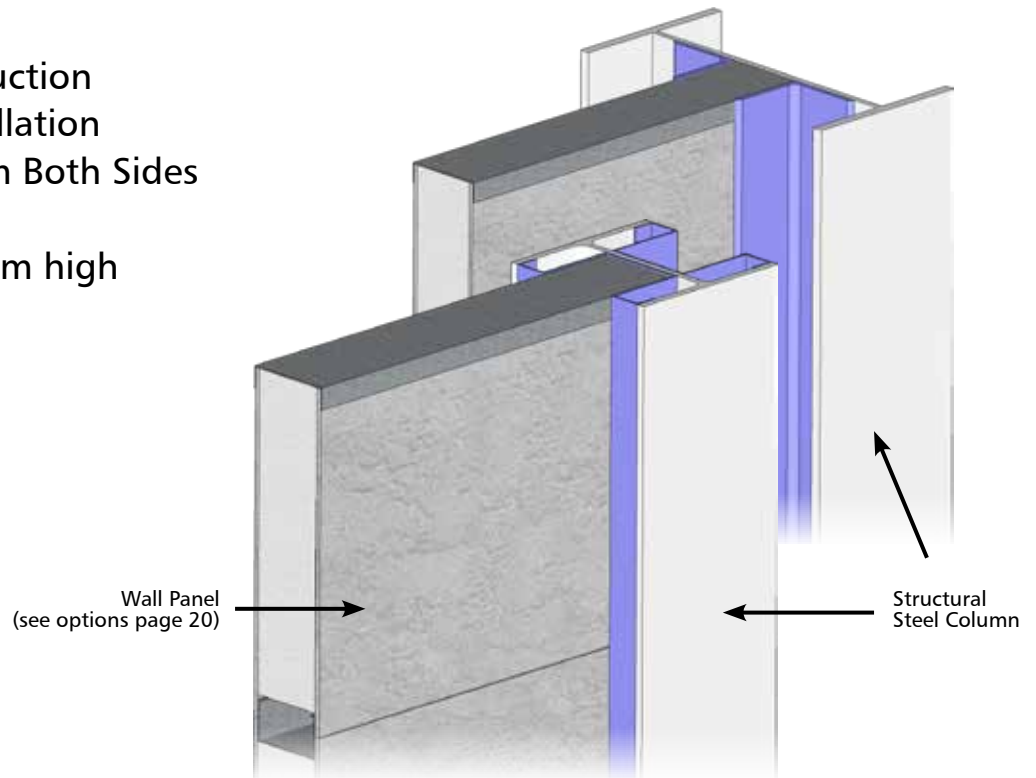
Techniko



Features

Fast, Boltless Install
 Excellent Sound Reduction
 Craneless Panel Installation
 Looks The Same From Both Sides
 Rated to Rw28
 Pre-engineered to 12m high

Assembled View



Options

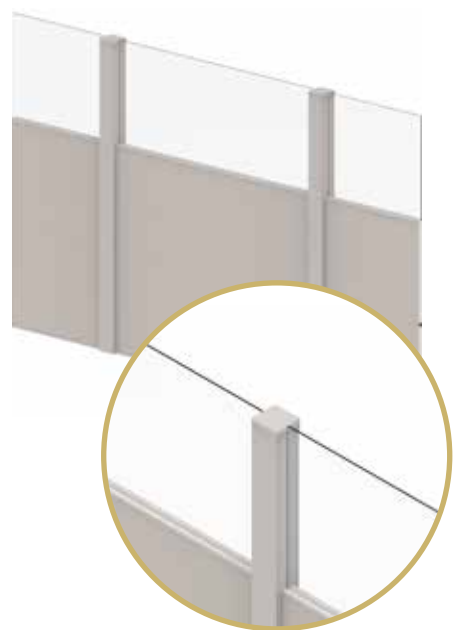
Cranked Wall



Double Wall

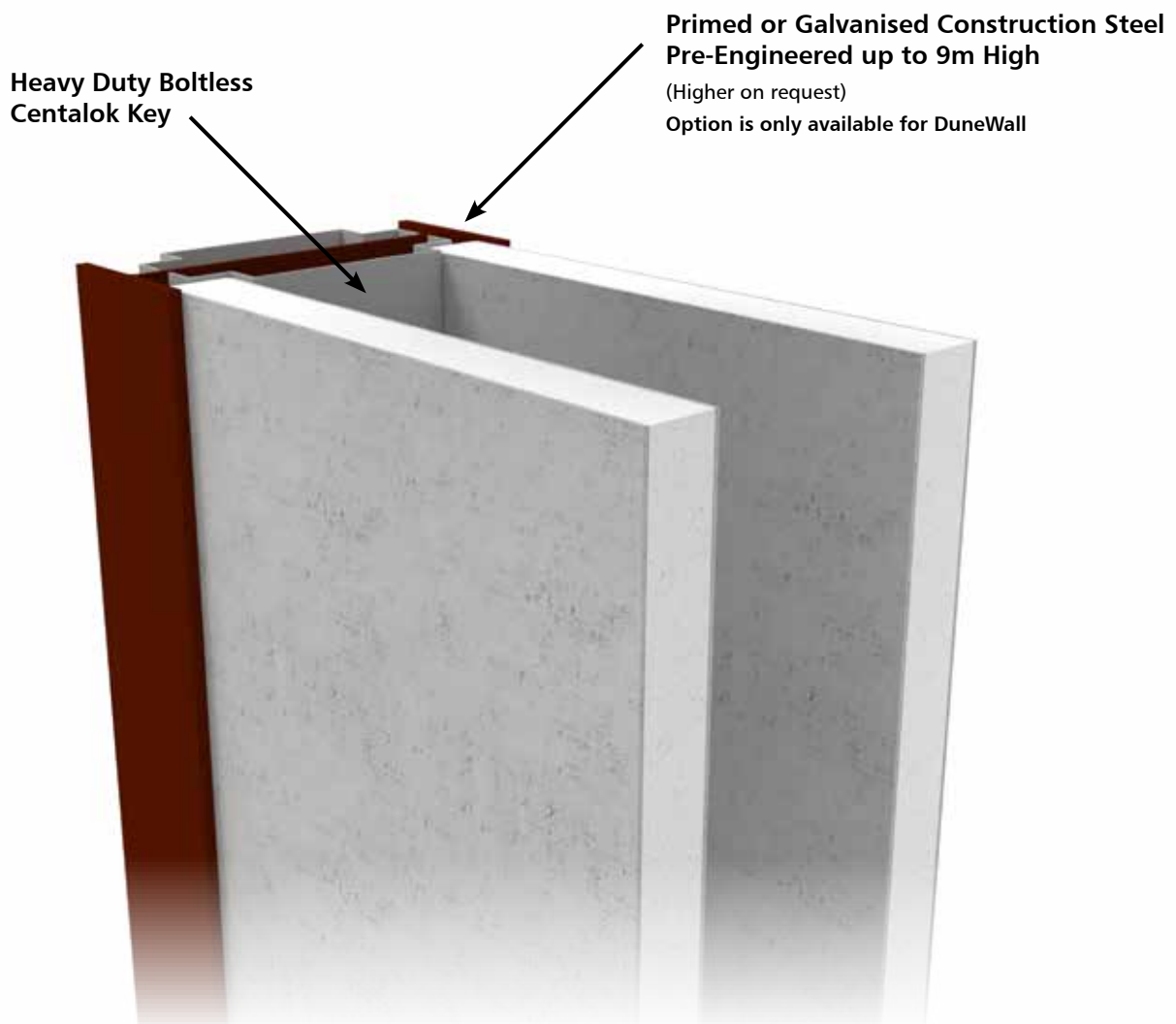


Plexiglass Wall



Double Panel System

Flush Finish Both Sides
Safe, Cost Effective Installation
Rated to Rw39







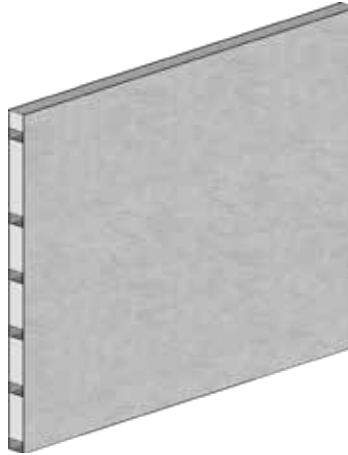
Panel Options



AcoustX

STANDARD PANELLING

- Quiet
- Certified to AS 1191-2002
- Can be easily cut or shaped on site
- Rw28



RetainX

REINFORCED PANELLING

- Retain soil up to 900mm high
- Can be integrated with all wall systems
- Custom made to retain to required height
- Rw28



ZorbX

ABSORPTIVE PANELLING

- Premium noise absorption
- Weather Resistant
- Ready to paint or coat once installed
- Pre-painted option
- NRC rating 0.95 (Absorptive side)
- 1 side absorptive & 1 side reflective



BlazeX

FIRE RATED PANELLING

- Fire rated acoustic wall panel
- Multiple sizes available
- Multiple colour options
- Can be integrated with all of our wall systems
- Rw28



StruX

HIGH IMPACT PANELLING

- Extreme Strength
- Extreme Vandal Protection
- Extreme Impact Resistance
- Acoustic Barrier Rw28

Wallmark Panel Selection Guide

	AcoustX	RetainX	ZorbX	BlazeX	StruX
Residential	✓	✓	-	✓	-
Commercial	✓	✓	✓	✓	✓
Noise Reduction	✓	✓	✓	✓	✓
Weather Resistant	✓	✓	✓	✓	✓
Pre-Painted Option	✓	✓	✓	✓	✓
Fire Retardant	✓	✓	✓	✓	✓
Panel Width (m)	2.4 / 3	2.4 / 3	2.4 / 3	2.4	2.4 / 3
Panel Height (m)	0.9 / 1.2	0.9 / 1.2	0.9 / 1.2	1.2	0.9 / 1.2
Panel Thickness (mm)	50 / 75	75	130	50 / 75 / 100	75
Compatible with Evowall	✓	✓	-	-	✓
Compatible with Urbanwall	✓	✓	-	-	✓
Compatible with Techniko	✓	-	-	✓	✓
Compatible with Dune	✓	✓	✓	✓	✓



The quiet advantage

Our wall panels are constructed from a very strong composite combination of Fibre Cement sheeting surrounding an Expanded Polystyrene core, creating excellent sound deadening properties.

Wallmark has had a complete wall section tested correctly and certified to AS 1191-2002. Testing data sheets and RMIT Transmission Loss Sound Report available on request. The panels can be easily cut or shaped on site using a circular or hand saw.

Technical Details

- **Mass:** 15kg/m²
- **Thickness:** 75mm
- **Height:** 900 or 1200mm
- **Length:** up to 3000mm
- **Acoustic Rating:** Rw 28
- **Wind Region Rating:**
2.4m Panel - C2
3m Panel - N3

1 The Panel Core (EPS)

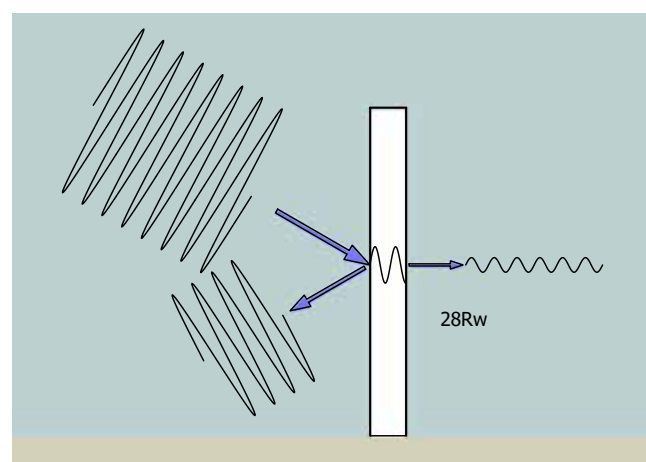
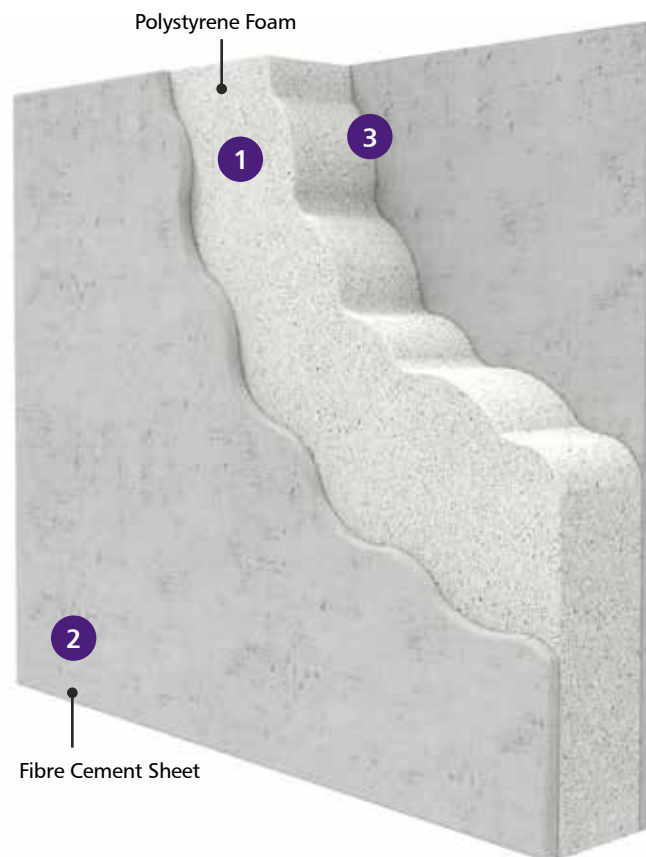
- Superb compressive strength to weight ratio
- Absorbs minimal water - no mould or rotting
- Environmentally friendly, safe and fully recyclable

2 The Panel Outer (FC)

- Fire resistant and non-combustible
- Very strong, impact resistant surface
- Maintenance free - will not breakdown
- High durability exterior grade composition
- Smooth finish - easy to apply paint or render

3 The Panel Bond (PU)

- Full surface contact adhesion
- High grade Polyurethane glue
- 10 year guarantee against failure
- Formulated for the Australian climate



Acoustically Rated Reinforced Panel

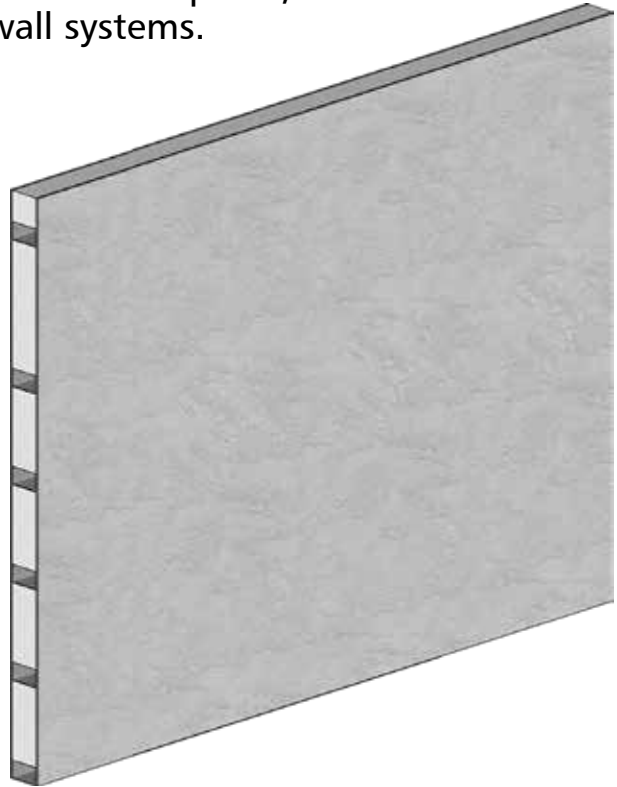
The RetainX panel is an acoustically rated, reinforced panel, that will fit in seamlessly with any of our wall systems.

We custom make these panels, to reinforce them to retain to your specific needs. Whether it be a standalone retaining wall, or integrated into a boundary fence, this panel will allow you to create a landscaping feature, and allow our wall systems to be used over a diverse range of environments.

Advantages

- Can retain soil up to 800mm high
- Panels come in multiple sizes
- Acoustically rated Rw28
- Looks the same as our other panels, so can be incorporated with any other system
- Lightweight
- Easy to install

Engineering and backfilling instructions available.



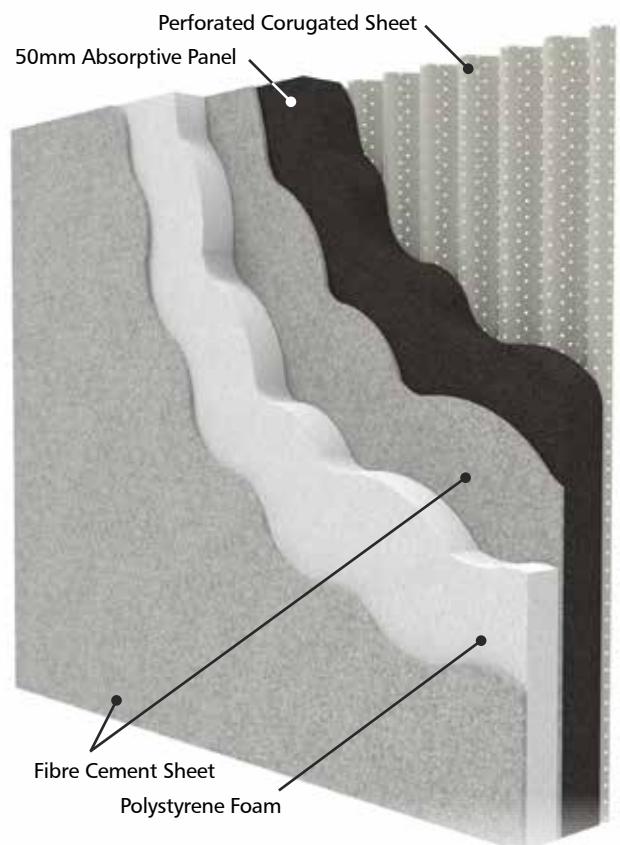
Commercial Noise Absorption Technology

Upgrade your Commercial Wallmark wall, to ensure effective results in reducing noise levels.

The panel is made of complex layers to ensure maximum sound absorption, whilst remaining lightweight and easy to install. The ZorbX panel is suitable for commercial applications such as railways, roadways, commercial sites, mines, car parks, and many more, and can be integrated into any of our Wallmark Smart Wall Solutions.

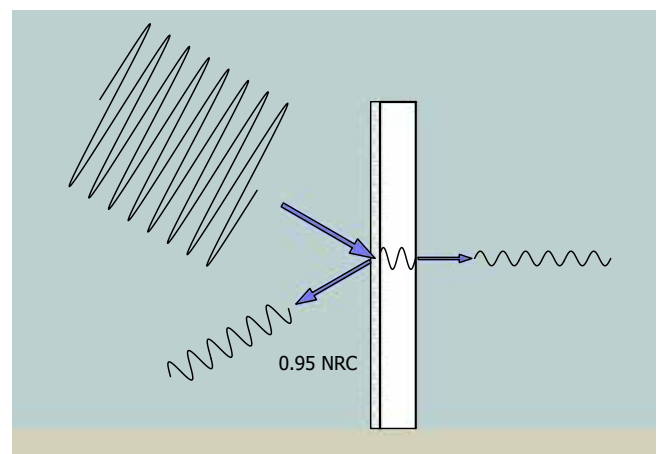
Advantages

- Noise absorption
 - allowing maximum noise reduction. NRC 0.95
- Weather resistance and longevity
- Available in a range of colours
- Lightweight
- Easy to install
- Suitable for most commercial applications
- Seamless aesthetic finish



If you need superior noise reduction for your commercial project, this is the panel to use.

Whilst all of our panels have some noise reduction benefits, we have taken the next step in designing a panel that integrates exceptional noise reduction with many other benefits.



Ultimate Fire Resistance

The BlazeX wall panels are designed to provide ultimate fire resistance, and sound reduction.

Fire rating is an important feature, and can sometimes be required as part of Australian regulations. Coming in multiple different sizes, and colours, this panel is very adaptable to your specific needs. It can be integrated into any of our wall systems and would be an excellent addition to your property.

Advantages

- 1200mm high, and up to 4200mm long panels
- Thickness – 50mm, 75mm and 100mm
- Fire rating up to 120 min (FRL /120 / 90)
- Up to Rw 25 acoustically rated.
- 100% recyclable and sustainable building product
- Product compliance with the NCC and AS-NZ Standards
- Lightweight
- Easy to install



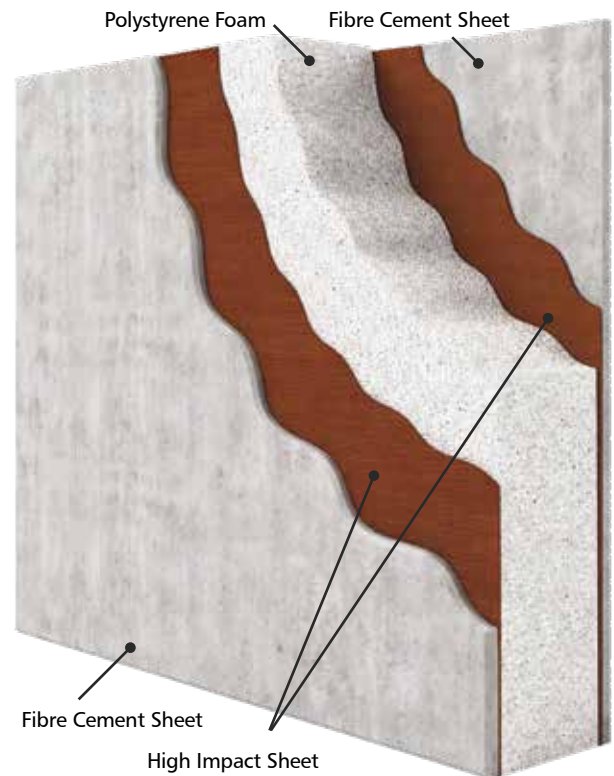
Ultimate Protection Acoustic Barriers

Give your acoustic barrier the ultimate protection from impact, vandals, vehicles or machinery with Wallmark's ultimate Strux upgrade.

Engineered with high impact composite technology, Strux upgrades your barrier wall investment to withstand the hardest knocks, minimising damage and maximising the lifespan of your wall. With primary applications on busy roadways, railway perimeters, car parks, commercial centres, building sites and walls subject to vandalism, Strux panels can be integrated into the full range of Wallmark Smart Wall Solutions.

Advantages

- Cost effective high impact acoustic barriers
- Extreme vandalism protection from physical impacts
- Extend the life of your barrier system
- High fire retardance
- Minimise maintenance and upkeep
- Clean skin aesthetic barrier solution
- Custom height to your specifications
- Single or double panel for extra noise reduction
- Tropical wind rating for storm protection



Superior impact resistance. Superior noise reduction

Protect your property from brutal impacts, vandals, noisy neighbours, busy roadways and commercial noise with Wallmark's smart structural acoustic barrier panelling – Strux.

NOT all acoustic barriers are the same!

If you are serious about protecting your property with the STRUX high impact acoustic barrier solution – tailored and engineered to your individual application, contact the team at Wallmark.



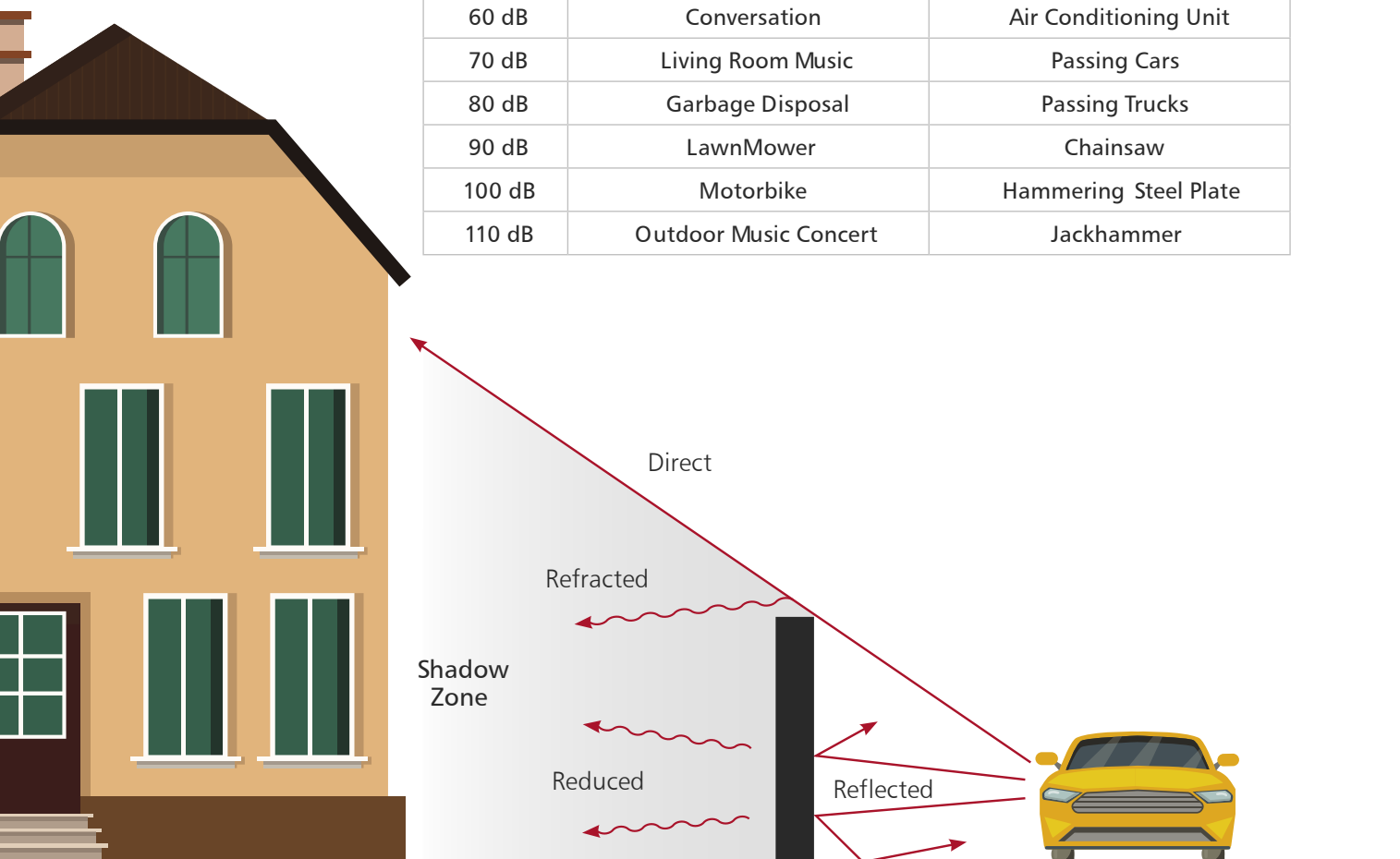
How does noise affect me?

Sound is emitted from thousands of everyday items and people all around us. Consistently loud or intermittent sounds can destroy your quality of life.

Frequency is also a factor with low frequency sounds being difficult to attenuate and high frequencies very effectively blocked. This is measured in Hertz - common noises are such as a stereo bass (40-80Hz), the human voice (300Hz), rock music (600-3000Hz) and a chainsaw (4kHz)

Common Sound Levels

DECIBELS	RESIDENTIAL	COMMERCIAL
60 dB	Conversation	Air Conditioning Unit
70 dB	Living Room Music	Passing Cars
80 dB	Garbage Disposal	Passing Trucks
90 dB	LawnMower	Chainsaw
100 dB	Motorbike	Hammering Steel Plate
110 dB	Outdoor Music Concert	Jackhammer



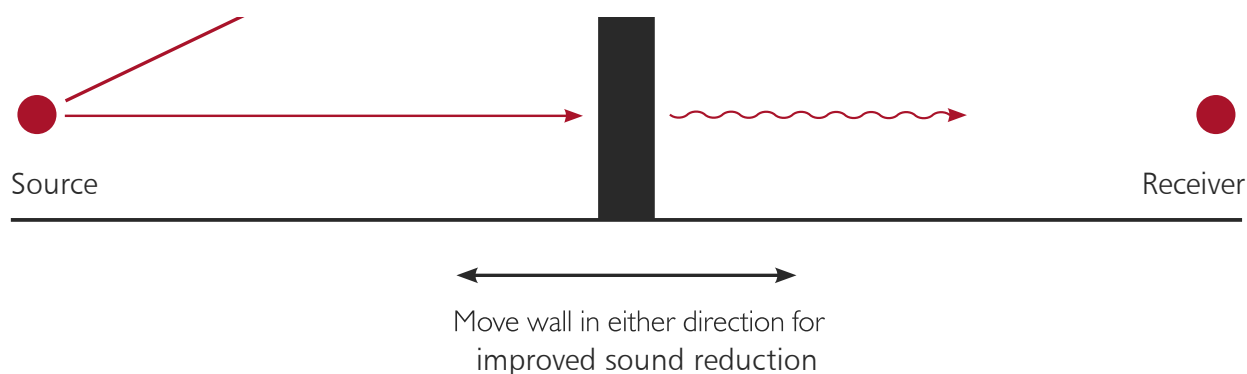
Barrier

How does a barrier work?

A noise barrier is a solid structure that intercepts and reduces sound within the shadow that it casts. Barrier attenuation in the open field is generally around 10 to 15 decibels due to height and width constraints, sound reflection and flanking around the edges.

The closer a barrier can be to the source or receiver and the higher it is, the more effective it will be. The line of sight between the source and receiver must be blocked completely by the barrier.

If a certain decibel level is to be achieved, a qualified acoustician should be used to investigate the site and measure the existing sound to be able to determine what is required and what the actual results might be.



WallMark average noise reduction

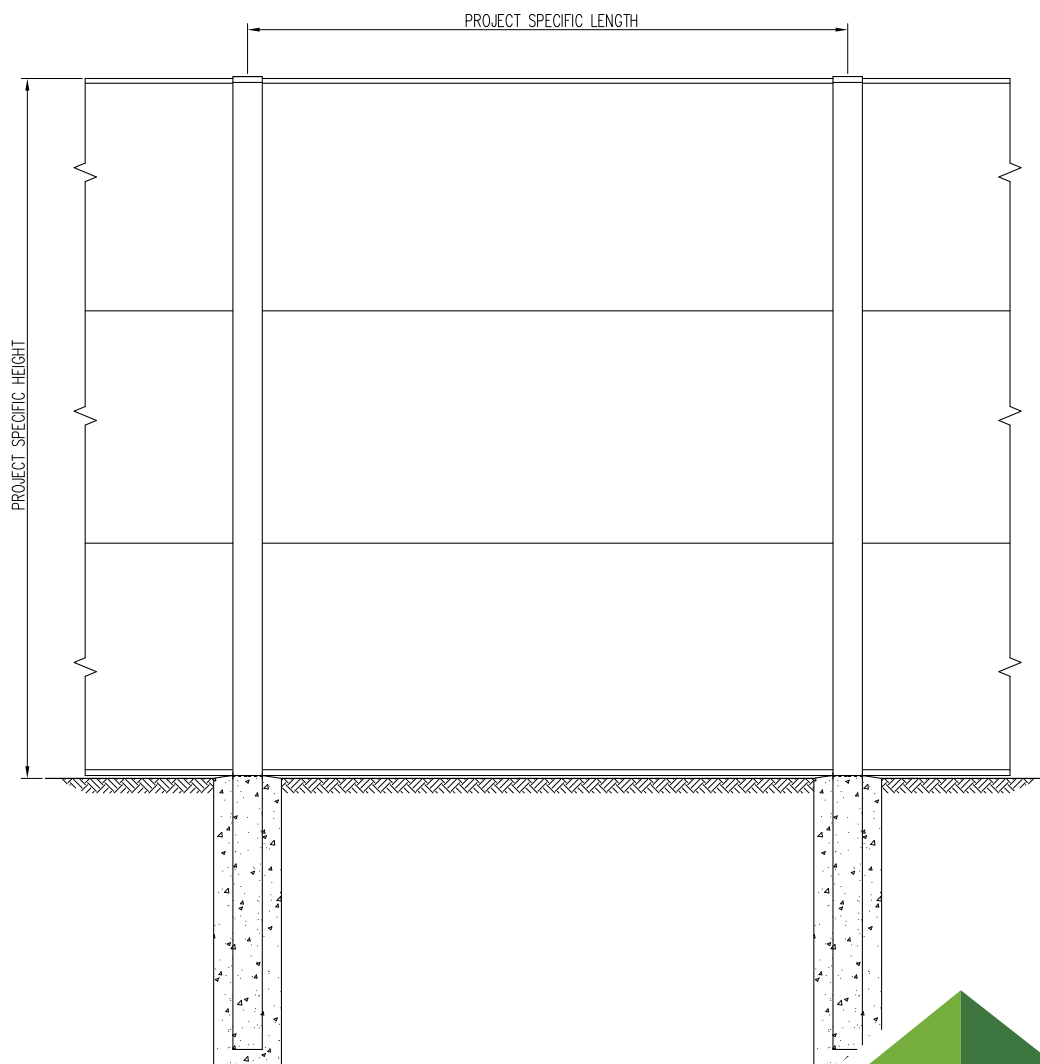
Standard Panel System - 28 Decibels

Double Panel System - 39 Decibels

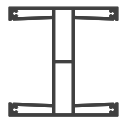
Testing data sheets, Acousticians Reports available on request.

Pre-engineered to the highest standards

Our range has been engineered to suit a variety of wind regions. This includes wall height, footing sizes and post spacings. Due to the light weight construction of the wall, the footings become narrow piers - easier to dig and using less concrete. No strip footings required. Pre-engineering has been completed on the Dunewall and Evowall posts to retain up to 900mm of soil in various wind regions. Each project can be supplied with a set of detailed drawings to assist in the layout and correct installation with engineering sign-off, if required.



EvoWall > 100mm Alloy Post



1. Alloy Post (mm)
A100CE
450 | 900 | 1200 | 1800 | 2100 | 2400 | 2700 | 3300 | 3600H



2. Wall Panel (mm)
Single & Double Rebate
WP 924 > 900H x 2400L
WP 1224 > 1200H x 2400L
WP 930 > 900H x 3000L
WP 1230 > 1200H x 3000L



3. Alloy Box Capping (mm)
ABC > 2350 | 2950



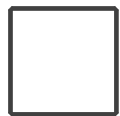
4. Alloy Flush Capping (mm)
AFC > 2350 | 2950



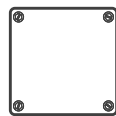
5. Gal Internal Panel Joiner (mm)
PJT > 2350 | 2950



6. Alloy Panel Joiner (mm)
PJT > 2350 | 2950



7. Alloy Post Cap
APC100P - "Plateau"



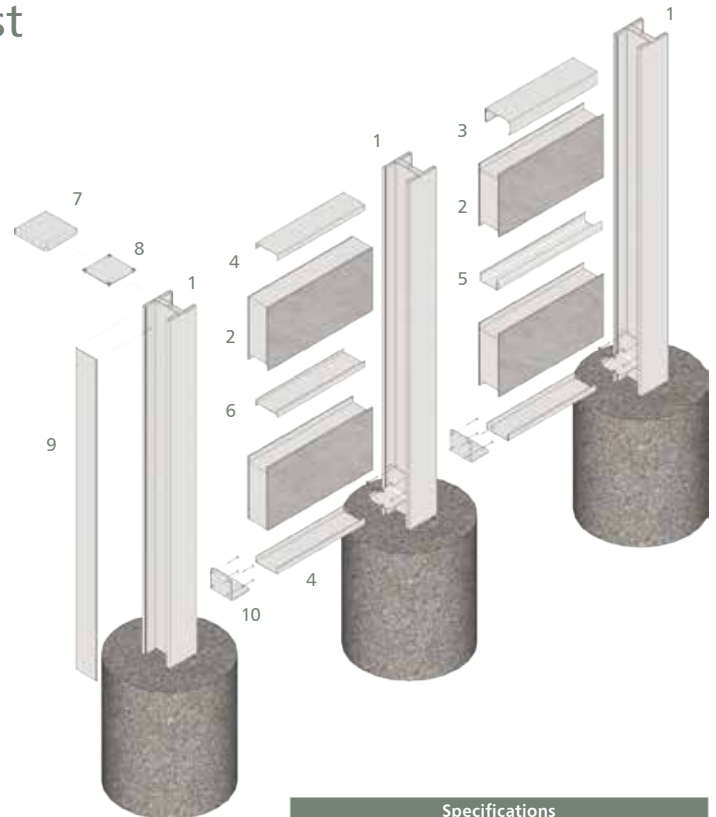
8. Alloy Post Cap
APC100H - "Horizon"



9. Alloy Infill
AINF 300 | 600 | 900 | 1200 | 1800 | 2100 | 2400 | 2700 | 3000 | 3300 | 3600H



10. Alloy Wall Support Bracket
AWSB



Specifications

- Wallmark "EvoWall" Alloy System
- Post Spacing 2440 - 3040mm
- Engineering as per table on back page
- To be installed as per manufactures specification

Maximum Post Height & Wind Regions

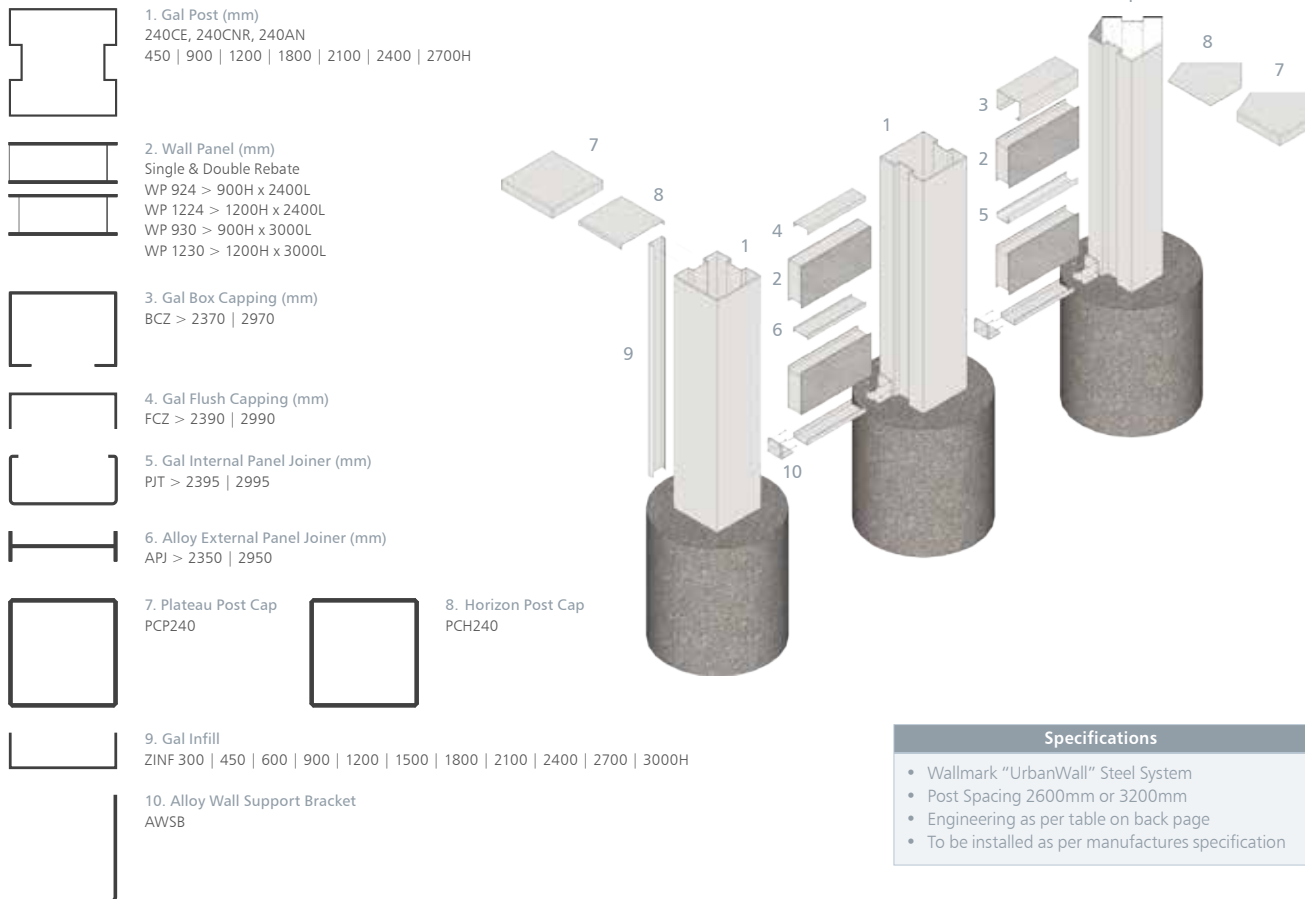
Panel Length mm	Wall Height mm			
	1200	1800	2100	2400
2400	C1	N3	N2	N2
3000	N3	N2	N2	-

Footing Depths for 300mm Diameter Footing for various Wind Regions

Panel Length mm	Wall Height mm			
	1200	1800	2100	2400
2400	N2 - 600	N2 - 600	N2 - 700	N2 - 700
	N3 - 600	N3 - 700	-	-
	C1 - 700	-	-	-
3000	N2 - 600	N2 - 600	N2 - 700	-
	N3 - 600	-	-	-

NOTE > N2 - 600 Denotes 300 Diameter x 600 Deep Footing for Wind Region N2
> Refer to Footing Detail and Corner Footing pages
> Corner and Angle Post Footing Diameter must be a minimum of 400mm

UrbanWall > 240mm Steel Post



Maximum Post Height & Wind Regions

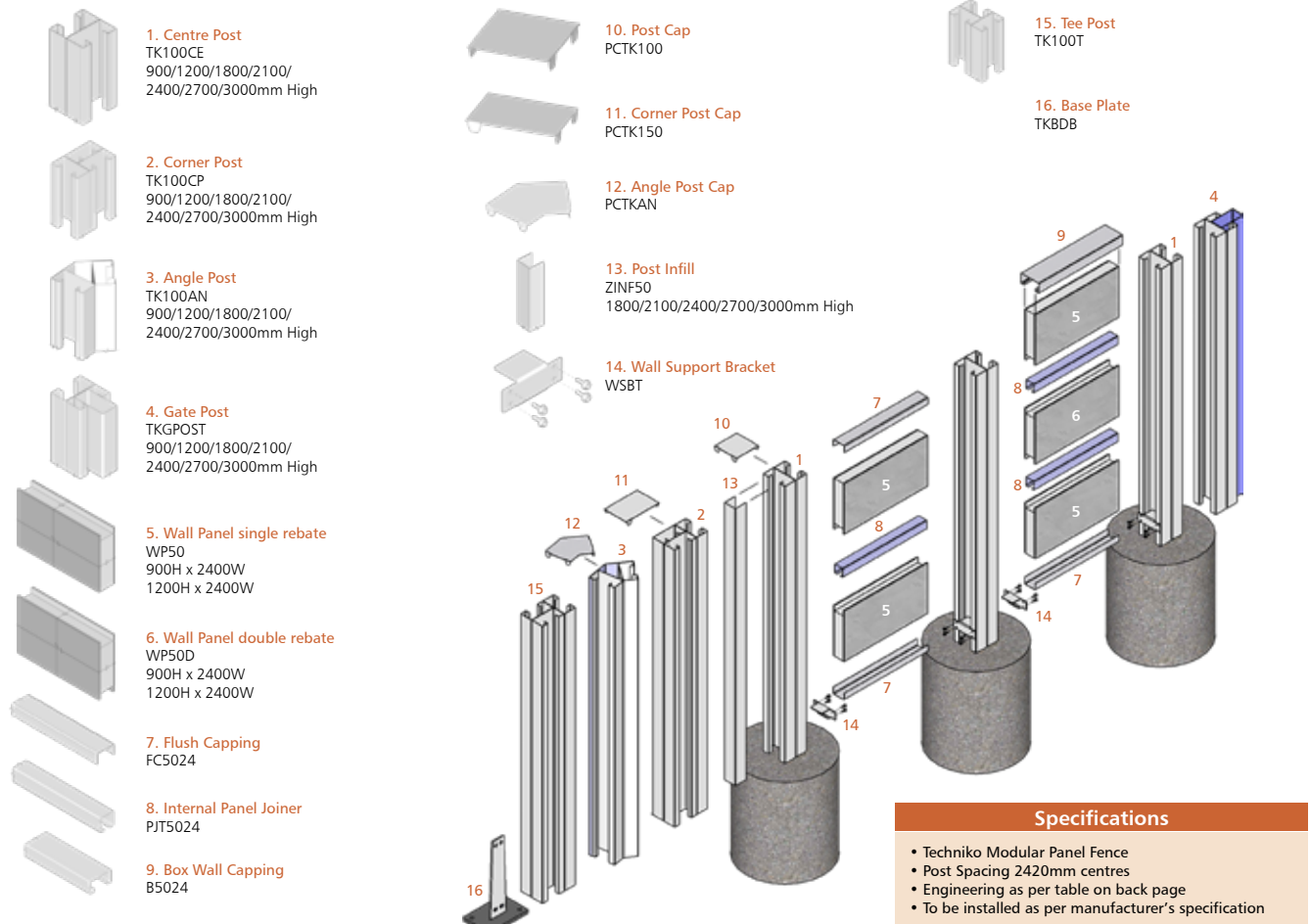
Panel Length mm	Wall Height mm				
	1200	1800	2100	2400	2700
2400	C2	C2	C2	C1	C1
3000	N3	N3	N3	N3	N3

Footing Depths for 450mm Diameter Footing for various Wind Regions

Panel Length mm	Wall Height mm				
	1200	1800	2100	2400	2700
2400	N2 - 700	N2 - 800	N2 - 850	N2 - 950	N2 - 950
	N3 - 800	N3 - 900	N3 - 1000	N3 - 1000	N3 - 1100
	C1 - 900	C1 - 1000	C1 - 1000	C1 - 1100	C1 - 1200
	C2 - 900	C2 - 1050	C2 - 1150	-	-
3000	N2 - 750	N2 - 850	N2 - 950	N2 - 950	N2 - 1050
	N3 - 850	N3 - 1000	N3 - 1000	N3 - 1100	N3 - 1200

NOTE > N2 - 700 Denotes 450 Diameter x 700 Deep Footing for Wind Region N2
> Refer to Footing Detail and Corner Footing pages

Techniko > Modular Panel Fence



Maximum Post Height & Wind Regions

Panel Length (mm)	Wall Height (mm)			
	1800	2100	2400	3000
2400	50m/s	40m/s	34m/s	29m/s

Minimum Footing Depths for 2400mm Panels

Wind Speed	Wall Height (mm)					
	1200	1500	1800	2100	2400	3000
20m/s	600	600	600	600	600	700
34m/s (N1)	600	600	600	600	700	-
40m/s (N2)	600	600	600	700	-	-
50m/s (N3/C1)	600	600	700	-	-	-

Note: Design assumes there is firmly compacted soil at surface around footings.
 Corner and Angle Post Footing Diameter must be a minimum of 400mm. Standard footings 300mm diameter.

DuneWall > Pre-Engineered Custom Post



1. Universal Post (mm)
100 UC 14.8 | 150 UC 23.4 | 200 UB 25.4 | 310 UB 40.4 | 410 UB 59.7



2. Wall Panel (mm) Single Rebate
WP 924 > 900H x 2400L | WP 1224 > 1200H x 2400L
WP 930 > 900H x 3000L | WP 1230 > 1200H x 3000L



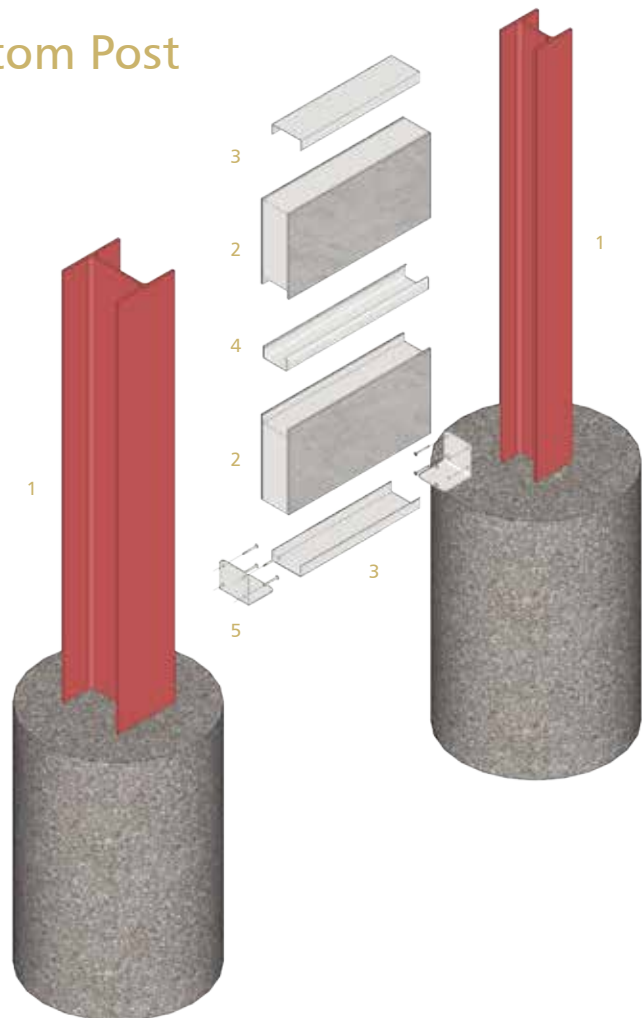
3. Gal Flush Capping (mm)
FCZ > 2390 | 2990



4. Pre Primed Gal Internal Panel Joiner (mm)
PJT > 2350 | 2650 | 2950



5. Pre Primed Gal Wall Support Bracket
WSBZ



Specifications

- Wallmark "DuneWall" Structural Steel System
- Post Spacing 2430 - 3030mm
- Engineering as per table on back page
- To be installed as per manufactures specification

Maximum Post Height & Wind Regions

Panel Length (mm)	Wall Height (mm)								
	1800	2100	2400	2700	3000	3300	3600	3900	4200
2400	C2	C2	C2	C2	N3	N3	N2	C1	C1
3000	C2	C2	C1	N3	N3	N2	-	N3	N3

Footing Depths for 350mm Diameter Footing for various Wind Regions

Panel Length (mm)	Wall Height (mm)								
	1800	2100	2400	2700	3000	3300	3600	3900	4200
2400	N2 - 600	N2 - 700	N2 - 750	N2 - 850	N2 - 950	N2 - 1050	N2 - 1150	N2 - 1200	N2 - 1300
	N3 - 750	N3 - 850	N3 - 950	N3 - 1050	N3 - 1150	N3 - 1300	-	N3 - 1500	N3 - 1600
	C1 - 850	C1 - 950	C1 - 1100	C1 - 1250	-	-	-	C1 - 1800	C1 - 1900
	C2 - 1000	C2 - 1150	C2 - 1300	-	-	-	-	-	-
3000	N2 - 650	N2 - 750	N2 - 850	N2 - 950	N2 - 1050	N2 - 1150	-	-	N2 - 1500
	N3 - 800	N3 - 950	N3 - 1100	N3 - 1200	N3 - 1300	-	-	-	N3 - 1800
	C1 - 950	C1 - 1100	C1 - 1200	-	-	-	-	-	-

N2 - 1000 Denotes 350 Diameter x 1000 Deep Footing for Wind Region N2

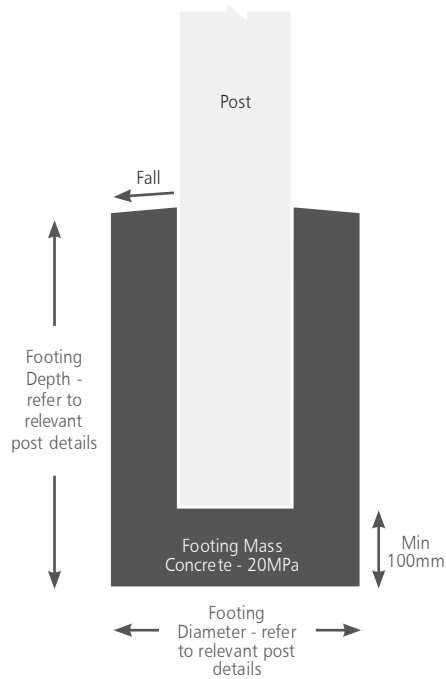
P1/1.5 Denotes 350ø bore pier, 1500mm deep into firm clay

Recommended footing depths are for terrain categories 2, 2.5 & 3

Further engineering available for heights up to 12m

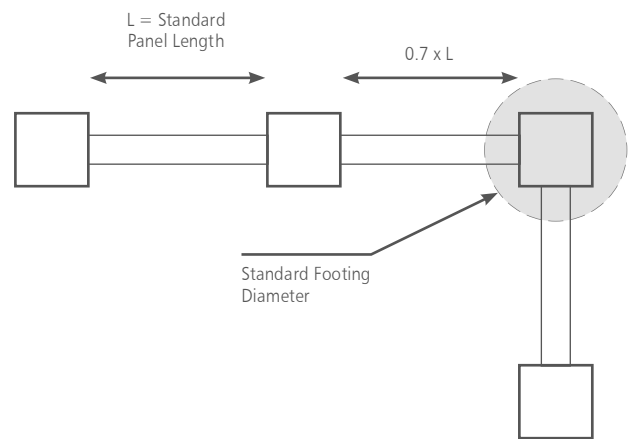


Footing Detail



NOTE > Footing Depths are based on Firm Clay. Engineering advice must be sought on Footing Depths for all other soil types.

Post Spacing



When wall is over 5 x longer than it is high:
 $0.7 \times L$ for 2 x height on corners and $0.5 \times L$ for 2 x height on ends.

Measuring Guide

Open and print off our "Site Measure Form" from the website.

(https://www.wallmark.com.au/basemedia/content/documents/Wallmark_Site_Measure_Form.pdf)

Fill out all details including the customer name and contact number.

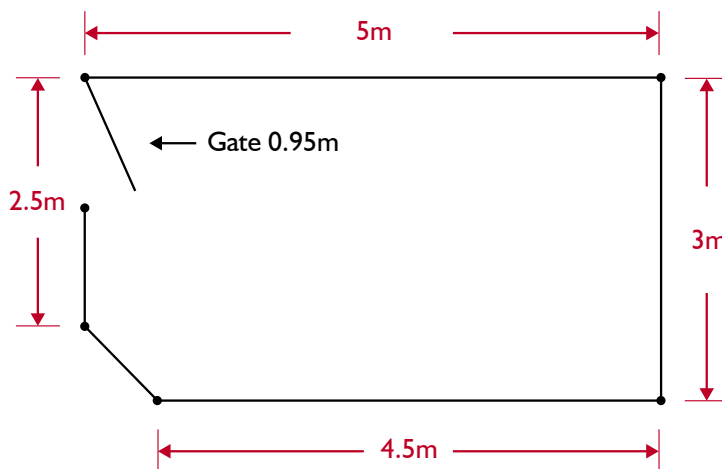
(IMPORTANT - check your local council requirements as to their approved wall heights).

Plan / Top View

Sketch on the above form the plan (or top) view of your site, showing the intended wall line (90 and 45 degree corners only) and any gate positions (state the gate width on your drawing in metres – we only offer 0.95 and 1.5m gate widths - 2 gates may be used to create a double width). Use our below suggestion as a guide.



Measure your maximum overall dimensions and mark these on your plan in metres as shown below. (Please ensure your dimensions are within your legal boundary lines).





At Wallmark, we recognise that when it comes to architectural wall solutions, one design does not fit all. We look forward to working hand in hand with you to solve your acoustic privacy wall challenges.

To find out more about our Smart Acoustic Wall Solutions visit **www.wallmark.com.au** or call 02 6057 7600.

Your Local Installer

Disclaimer

The material within this booklet is made available for general use and information purposes only. Users should use their own skill and care with respect to the use of material. It is not provided as professional advice. Users should obtain appropriate professional advice relevant to their particular circumstances to evaluate its accuracy, currency, completeness and relevance for their purposes and specific site restraints and topography. No person should place reliance on information from the information booklet. It is the user's sole responsibility to comply with all statutory requirements and make appropriate decisions in relation to such compliance. Whilst every effort has been taken to ensure the accuracy and currency of all information within the information booklet, it is not verified information and the accuracy and currency of the information cannot be guaranteed. The provider of this booklet does not warrant that the information within this information booklet can be relied on and expressly disclaims all warranties, express or implied, and does not warrant or make any representations regarding the use of any information within the information booklet. In some cases the material may incorporate or summarise views, guidelines or recommendations of third parties. The information being general in nature is unable to take into account specific site conditions or additional controls that may apply to a particular site. Note that laws and regulations may vary depending on states and territories and it is your responsibility to check and comply with such law and regulations.

