

# DuneWall

HDG Structural Columns | AcoustX Panels



## Custom Height Acoustic Walling System

**Wallmark**  
wallmark.com.au



# DuneWall

## Custom Height Acoustic Wall

**Cranes are not required to fit the panels and the system ensures minimal site disruption, a real bonus for busy commercial and industrial operations. The smart modular design delivers a crack free finish for the lifetime of your Dunewall.**

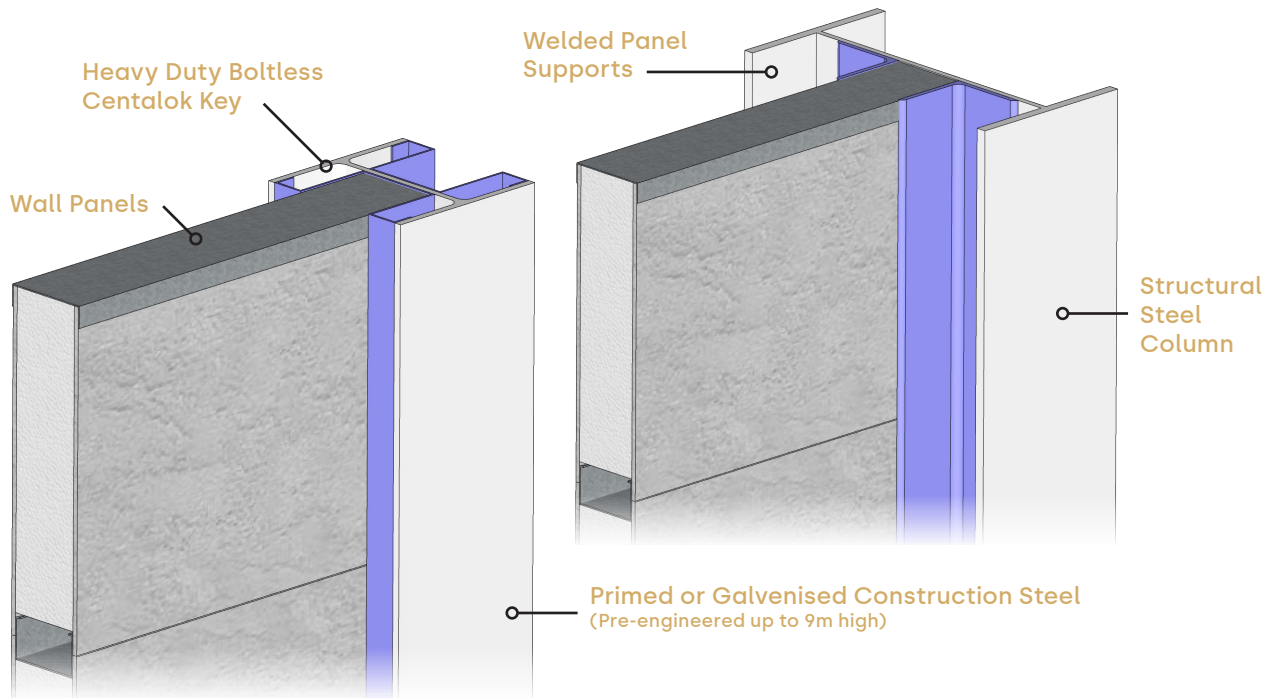
Give your acoustic barrier the ultimate protection from impact, vandals, vehicles or machinery with Wallmark's ultimate Strux upgrade. Engineered with high impact composite technology, Strux upgrades your noise barrier wall investment to withstand the hardest knocks, minimising damage and maximising the lifespan of your wall.

With primary applications on busy roadways, railway perimeters, car parks, commercial centres, building sites and walls subject to vandalism, Strux panels can be integrated into the full range of Wallmark Smart Wall Solutions.

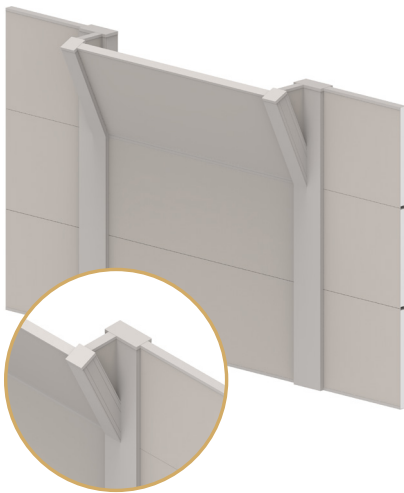
### Features

- Cost Effective Alternative To Block & Tilt Wall Systems
- HDG Structural Steel Posts
- Pre-Engineered to 12m in Height
- Fast Install with Minimal Site Disruption
- Excellent Sound Reduction
- Light Weight Panels
- Looks The Same From Both Sides
- NATA Acoustically Tested and Certified to AS 1191-2002

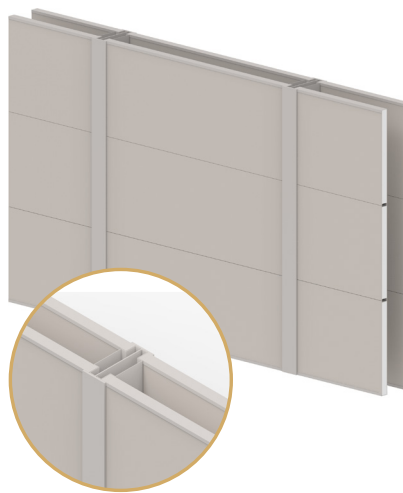
# Features & Options



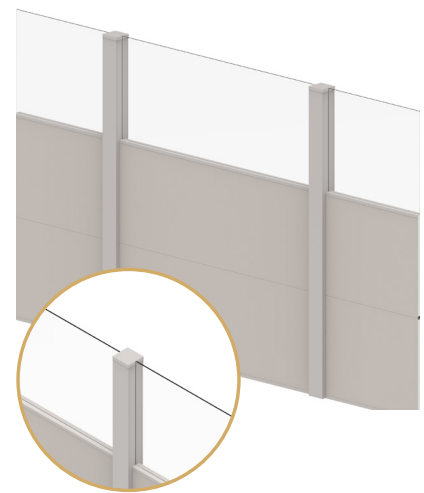
## Options



**Cranked Wall**  
Maximum noise reduction where height restrictions are required

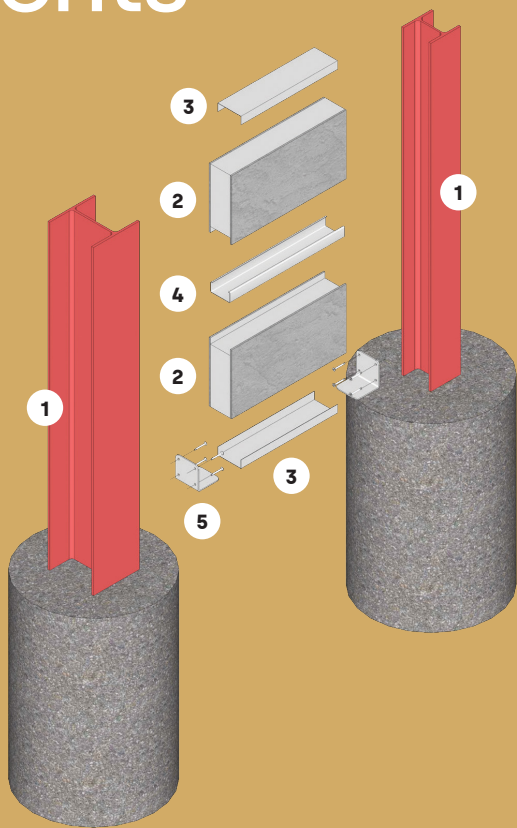


**Double Wall**  
Extreme noise reduction attenuation



**Plexiglass Wall**  
Prevents overshadowing without compromising noise attenuation

# Components



## Posts



### 1. Universal Post

Options

- 100 UC 14.8
- 150 UC 23.4
- 200 UB 25.4
- 310 UB 40.4
- 410 UB 59.7

## Capping



### 3. Gal Flush Capping

FCZ > 2400 | 3000

## Wall Support Bracket



### 5. Pre Primed Gal Wall Support Bracket

WSBZ

## Panels



### 2. Wall Panel

Single Rebate

- WP 924 > 900H x 2400L
- WP 1224 > 1200H x 2400L
- WP 930 > 900H x 3000L
- WP 1230 > 1200H x 3000L

## Joiner



### 4. Pre Primed Gal Internal Panel Joiner

PJT > 2350 | 2950

All Measurements in mm



# Technical Information

## Maximum Post Height & Wind Regions

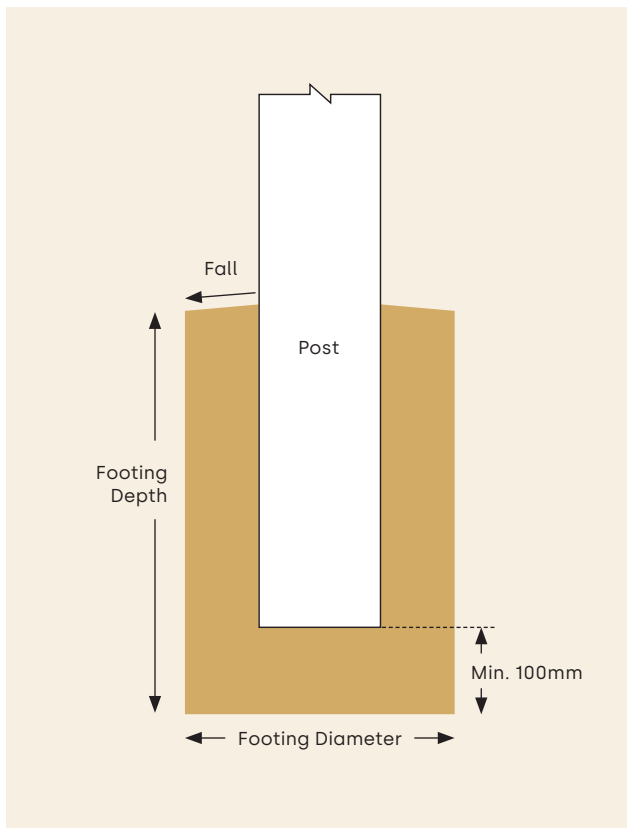
Panel Length	Wall Height				
	3000	3300	3600	3900	4200
2400	C2	C2	C2	C1	C1
3000	N3	N3	N3	N3	N3

## Footings Depths for 450mm Diameter Footing for various Wind Regions

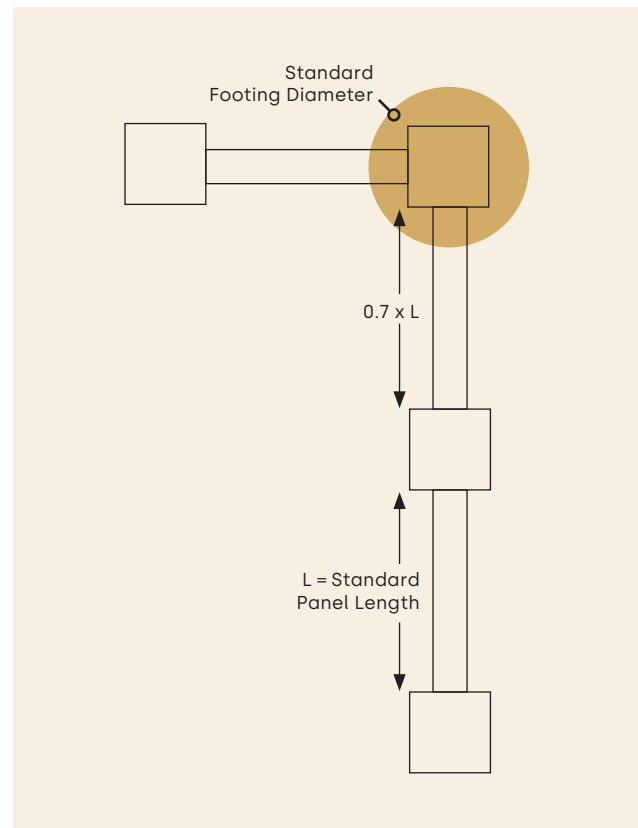
Panel Length	Wall Height				
	3000	3300	3600	3900	4200
2400	N2 - P1/1000	N2 - P1/1100	N2 - P1/1200	N2 - P1/1200	N2 - P1/1300
	N3 - P1/1200	N3 - P1/1300	N3 - P1/1400	N3 - P1/1500	N3 - P1/1600
	C1 - P1/1400	C1 - P1/1500	C1 - P1/1600	C1 - P1/1800	C1 - P1/1900
	C2 - P1/1700	C2 - P1/1800	C2 - P1/2000	-	-
3000	N2 - P1/1000	N2 - P1/1200	N2 - P1/1300	N2 - P1/1400	N2 - P1/1500
	N3 - P1/1300	N3 - P1/1500	N3 - P1/1600	N3 - P1/1700	N3 - P1/1800
	C1 - P1/1500	C1 - P1/1700	C1 - P1/1800	C1 - P1/1900	-
	C2 - P1/1800	-	-	-	-

**NOTE** P1/1.5 Denotes 350Ø bore pier, 1500mm deep into firm clay. Recommended footing depths are for terrain categories 2, 2.5 & 3

## Footings Detail



## Post Spacing



**NOTE** Footing Depths are based on Firm Clay. Engineering advice must be sought on Footing Depths for all other soil types.

All Measurements in mm

# Case Study



## Wallmark designs and constructs a stylish artistic solution for 6.5m high acoustic barrier

### Hanson Concrete

#### Problem

Hanson Concrete's Perth Plant is the busiest in Australia. The local Council demanded the site be screened off for sound attenuation and visual aesthetics due to the fact it was on a high profile and busy intersection.

#### Solution

Wallmark provided both a visual and acoustic screen incorporating tree features to replicate the artists impression thus solving all issues in one transaction – 6.5 m high x 70 meters long Dune wall bolt down and custom made to site requirements.

#### Key advantages

- Can be engineered to very high walls
- Certified results for Government Departments
- Wallmark can organize project extras
- Patented systems allows front loading of panels, ensuring maximum safety on building sites



# Gallery



Gallery





Gallery





Gallery

# Panel Options



## AcoustX

### The quiet advantage

Our wall panels are constructed from a very strong composite combination of Fibre Cement sheeting surrounding an Expanded Polystyrene core, creating excellent sound deadening properties.

Wallmark has had a complete wall section tested correctly and certified to AS 1191-2002. Testing data sheets and RMIT Transmission Loss Sound Report available on request. The panels can be easily cut or shaped on site using a circular or hand saw.

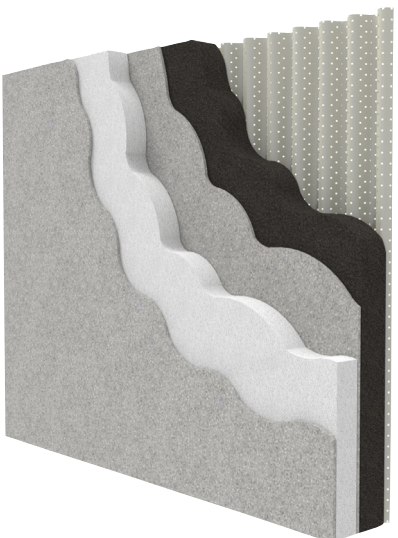


## RetainX

### Acoustically Rated Reinforced Panel

The RetainX panel is an acoustically rated, reinforced panel, that will fit in seamlessly with many of our wall systems.

We custom make these panels, to reinforce them to retain to your specific needs. Whether it be a freestanding retaining wall, or integrated into a boundary fence, this panel will allow you to create a landscaping feature, and allow our wall systems to be used over a diverse range of environments.



## ZorbX

### Commercial Noise Absorption Technology

Upgrade your Commercial Wallmark wall, to ensure effective results in reducing noise levels.

The panel is made of complex layers to ensure maximum sound absorption, whilst remaining lightweight and easy to install. The ZorbX panel is suitable for commercial applications such as railways, roadways, commercial sites, mines, car parks, and many more, and can be integrated into our DuneWall system.





## BlazeX

### Ultimate Fire Resistance

The BlazeX wall panels are designed to provide ultimate fire resistance, and sound reduction.

Fire rating is an important feature, and can sometimes be required as part of Australian regulations. Coming in multiple different sizes, and colours, this panel is very adaptable to your specific needs. It can be integrated into our Techniko and DuneWall systems and would be an excellent addition to your property.



## Strux

### Ultimate Protection Acoustic Barriers

Give your acoustic barrier the ultimate protection from impact, vandals, vehicles or machinery with Wallmark's ultimate Strux upgrade.

Engineered with high impact composite technology, Strux upgrades your barrier wall investment to withstand the hardest knocks, minimising damage and maximising the lifespan of your wall.

With primary applications on busy roadways, railway perimeters, car parks, commercial centres, building sites and walls subject to vandalism, Strux panels can be integrated into the full range of Wallmark Smart Wall Solutions.

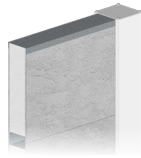
## AcoustX RetainX ZorbX BlazeX Strux

Residential	✓	✓	X	X	X
Commercial	✓	✓	✓	✓	✓
Noise Reduction	✓	✓	✓	✓	✓
Weather Resistant	✓	✓	✓	✓	✓
Pre-Painted Option	✓	✓	✓	✓	✓
Fire Retardant	✓	✓	✓	✓	✓
Fire Rated	X	X	X	✓	X
Panel Length (m)	2.4 / 3 / 4.2	2.4	2.4 / 3	2.4 / 3	2.4 / 3 / 4.2
Panel Height (m)	0.9 / 1.2	0.9 / 1.2	0.9 / 1.2	1.2	0.9 / 1.2
Panel Thickness (mm)	50 / 75 / 80 / 100	75 / 80 / 100	130	50 / 75 / 100	75 / 80 / 100
Reflective	✓	✓	X	✓	✓
Absorptive	X	X	✓	X	X
Retaining	X	✓	X	X	X
Impact Resistant	X	X	X	X	✓

# The Wallmark Product Range

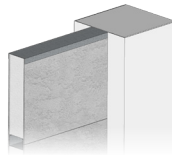
We offer four core products that meet the needs for a variety of residential and commercial applications.

EvoWall



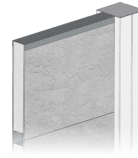
**Sleek Modern Privacy Wall**

UrbanWall



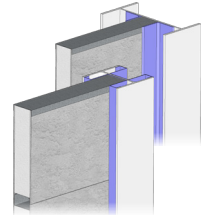
**Masonry Style Feature Wall**

Techniko



**Modular Panel Fence**

DuneWall



**Custom Height Acoustic Wall**

<b>Residential</b>	✓	✓	✓	X
<b>Commercial</b>	✓	✓	✓	✓
<b>Alloy Posts - Pre Primed</b>	100mm	-	-	-
<b>Steel Posts- Galvanised Steel</b>	X	240mm	100mm	Pre-engineered Custom
<b>Panel Thickness</b>	75mm	75mm	50mm	75 / 80 / 100mm
<b>Slat Compatible</b>	✓	✓	✓	✓
<b>Maximum Panel Length</b>	3m	3m	2.4m	4.2m
<b>Pre-engineered to Height</b>	2.4m	3m	2.4m	12m

## The Wallmark Advantage



### Innovative Solutions

We offer custom designed solutions for a wide range of industry sectors and applications.



### Full Accreditation

Our products have been approved by NATA. Our reflective noise walls also boast an acoustic rating of RW28 and our absorptive walls an NRC rating of 0.95.



### Project Collaboration

We manage your project from the design process right through to completion using world class tradespeople and consultants.



### Australian Made

Over 2 decades of trust and experience in the Australian construction industry.

At Wallmark, we recognise that when it comes to architectural wall solutions, one design does not fit all. We look forward to working hand in hand with you to solve your acoustic privacy wall challenges.

To find out more about our Smart Acoustic Wall Solutions visit [www.wallmark.com.au](http://www.wallmark.com.au) or call **02 6057 7600**.

**Wallmark**

19377 220503