

UrbanWall

240mm Steel Post | 75mm Panels



Masonry Style Feature Walling System

Wallmark
wallmark.com.au



UrbanWall

Masonry Style Feature Wall

Whether you want to enhance the value of your home or to protect your business, the Urbanwall modular walling system brings style and sophistication to your property at a fraction of the cost of traditional block walls.

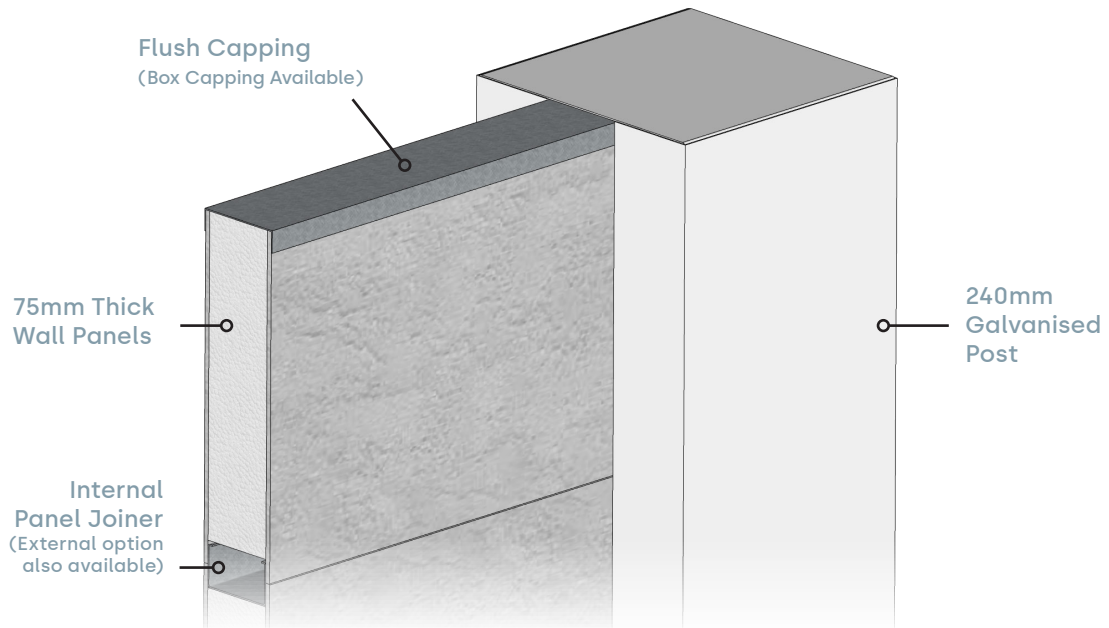
Urbanwall's 240mm pillar style post and cap system with acoustic wall panels delivers a contemporary masonry feel to accentuate your property and shield you from noisy neighbours and watchful eyes. Best of all, the modular assembly ensures hassle free installation with minimal site disruption and the smart design delivers a crack free finish for the lifetime of the wall.

Pre-engineered to 3m, the Urbanwall modular fencing system is built from quality Australian products to handle Australia's harshest conditions.

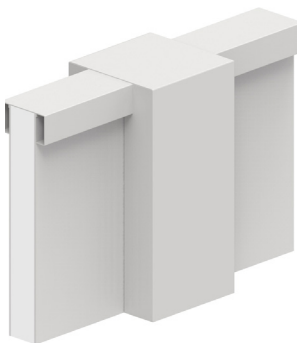
Spray, roll or render your Urbanwall to your colour pallet for a first class result and emphasise the details with clever lighting, slat or stone inlays to integrate with your designer landscape.

You can add value, privacy and peace and quiet to your home or business with Urbanwall prestige masonry style feature walls. Whether you install DIY or with your preferred local contractor, work with the team at Wallmark for factory direct personalised service and great advice.

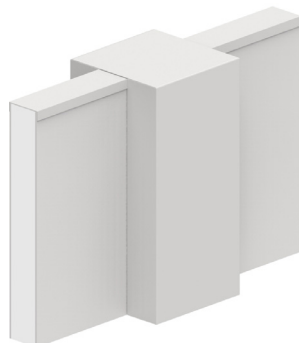
Features & Options



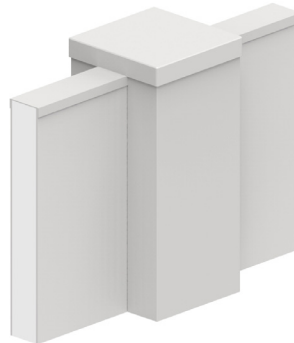
Capping Styles



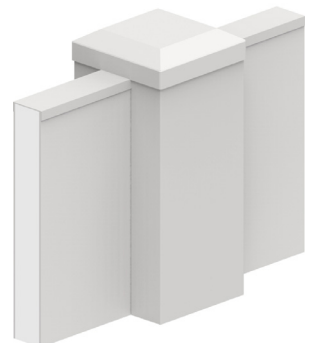
Box Wall Capping
Horizon Post Cap



Flush Wall Capping
Horizon Post Cap

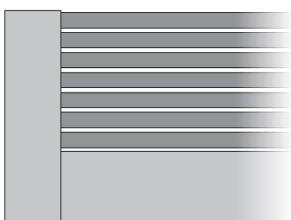


Flush Wall Capping
Plateau Post Cap

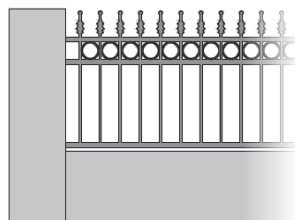


Flush Wall Capping
Tableland Post Cap

Adaptions



Slat Infill



Classic Infill

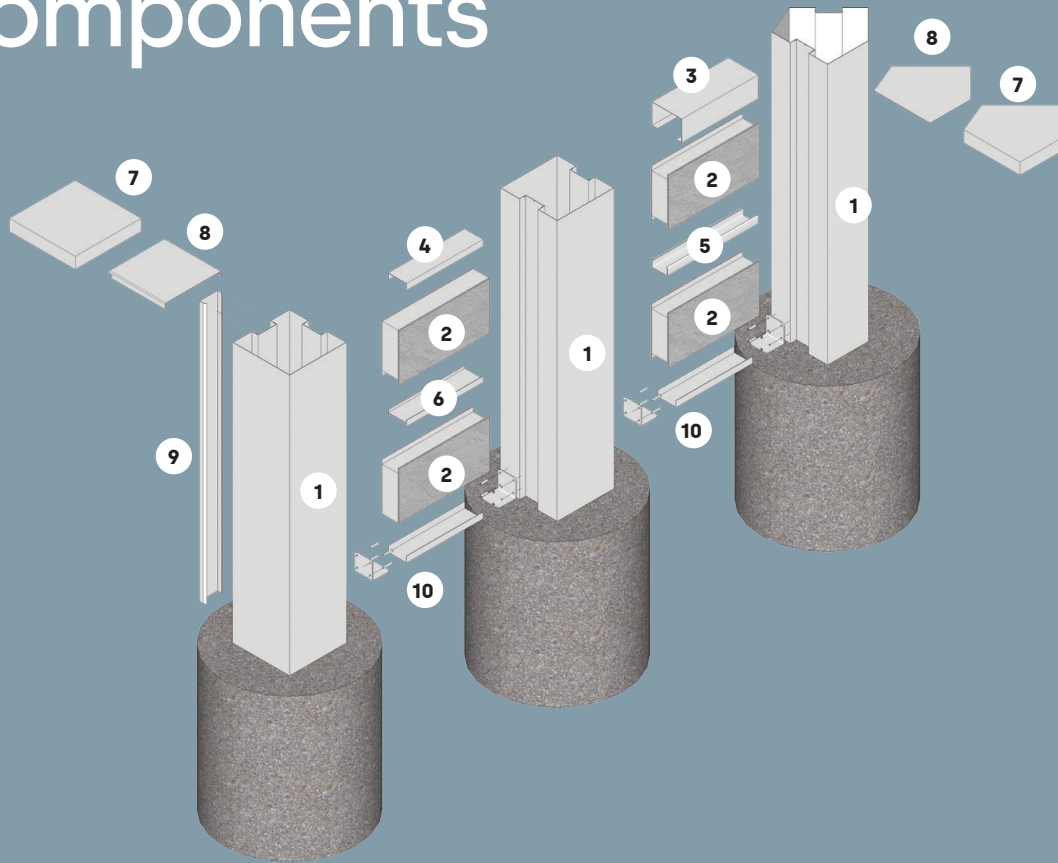


Flat Top Infill



Oxley Plain Infill

Components



Posts



1. Gal Post

1450 - 1850 | 2150
2550 - 2950 | 3250
3650 - 3950

Capping Options



3. Gal Box Capping

BCZ > 2370 | 2970



4. Gal Flush Capping

FCZ > 2400 | 3000

Additional



9. Gal Infill

ZINF 300 | 450 | 600 | 900 | 1200
| 1500 | 1800 | 2100 | 2400 | 2700
| 3000H



10. Wall Support Bracket

WSB

Panels



2. Wall Panel

Single & Double Rebate
WP 924 > 900H x 2400L
WP 1224 > 1200H x 2400L
WP 930 > 900H x 3000L
WP 1230 > 1200H x 3000L

Joiner Options



5. Gal Internal Panel Joiner

PJT > 2395 | 2995



6. Alloy External Panel Joiner

APJ > 2350 | 2950

Alloy Post Cap Options



7. Plateau Post Cap

PCP240



8. Horizon Post Cap

PCH240

All Measurements in mm

Technical Information

Maximum Post Height & Wind Regions

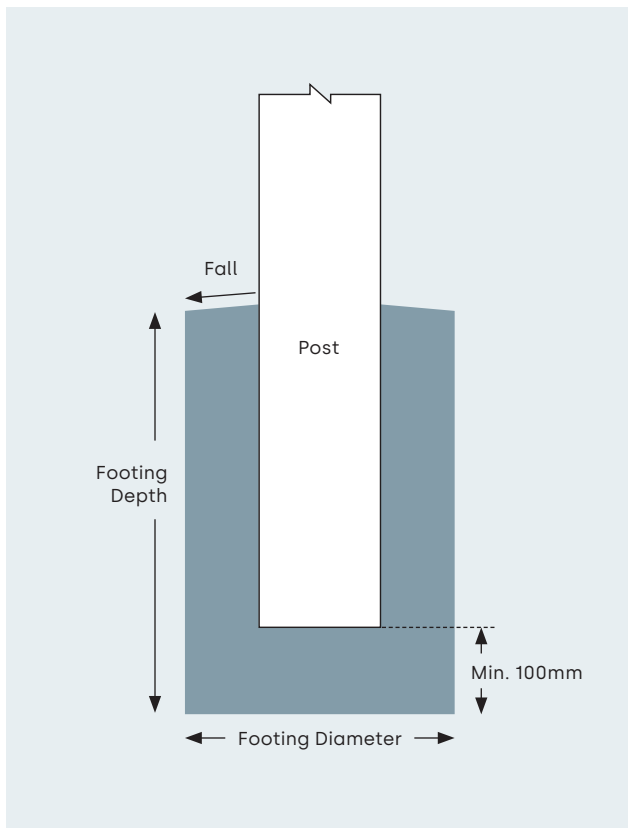
Panel Length	Wall Height				
	1200	1800	2100	2400	2700
2400	C2	C2	C2	C1	C1
3000	N3	N3	N3	N3	N3

Footing Depths for 450mm Diameter Footing for various Wind Regions

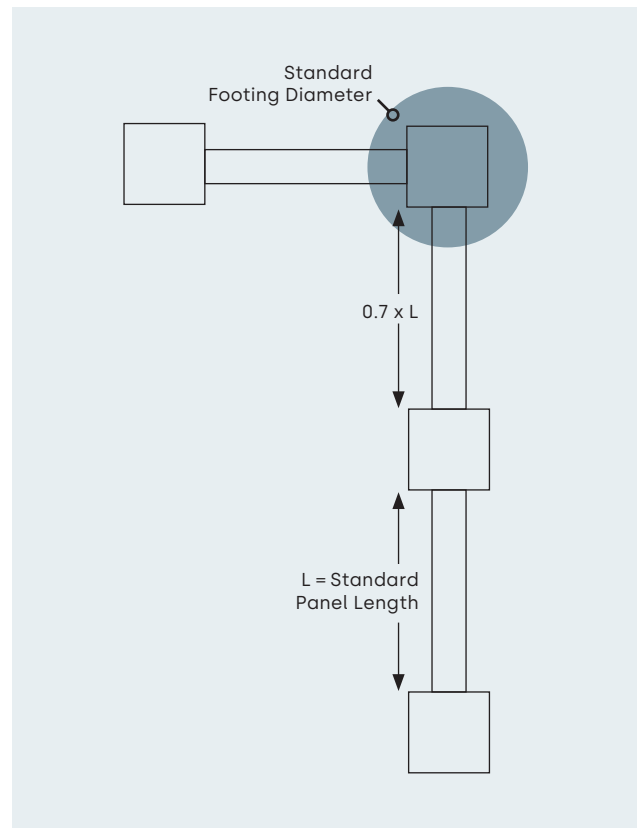
Panel Length	Wall Height				
	1200	1800	2100	2400	2700
2400	N2 - 700	N2 - 800	N2 - 850	N2 - 950	N2 - 950
	N3 - 800	N3 - 900	N3 - 1000	N3 - 1000	N3 - 1100
	C1 - 900	C1 - 1000	C1 - 1000	C1 - 1100	C1 - 1200
	C2 - 900	C2 - 1050	C2 - 1150	-	-
3000	N2 - 750	N2 - 850	N2 - 950	N2 - 950	N2 - 1050
	N3 - 850	N3 - 1000	N3 - 1000	N3 - 1000	N3 - 1200

NOTE N2 - 700 Denotes 450 Diameter x 700 Deep Footing for Wind Region N2

Footing Detail



Post Spacing



NOTE Footing Depths are based on Firm Clay. Engineering advice must be sought on Footing Depths for all other soil types.

All Measurements in mm

Case Study



77m of Urbanwall delivered in under 7 days.

Ultimate Privacy

Problem

This family was in need of a cost-effective solution to block the view from the road that runs directly around the back of their house above them. They discovered that the cost of a brick wall was nearly four times their allowed budget. Along with this, people from the road could see straight into their pool.

Solution

Urbanwall was perfect for the job as it was cost-effective and exceeded privacy expectations. The wall was installed at 77m long and 2.4m high. The install was complete within six days even though there was a difficult landscape and removal of old fencing.

Key advantages

- Difficult slope- No Problem
- Prestige Finish
- Immediate Privacy
- Fast install
- Cost-effective alternative

Gallery



Gallery





Gallery

Panel Options



AcoustX

The quiet advantage

Our wall panels are constructed from a very strong composite combination of Fibre Cement sheeting surrounding an Expanded Polystyrene core, creating excellent sound deadening properties.

Wallmark has had a complete wall section tested correctly and certified to AS 1191-2002. Testing data sheets and RMIT Transmission Loss Sound Report available on request. The panels can be easily cut or shaped on site using a circular or hand saw.



RetainX

Acoustically Rated Reinforced Panel

The RetainX panel is an acoustically rated, reinforced panel, that will fit in seamlessly with many of our wall systems.

We custom make these panels, to reinforce them to retain to your specific needs. Whether it be a freestanding retaining wall, or integrated into a boundary fence, this panel will allow you to create a landscaping feature, and allow our wall systems to be used over a diverse range of environments.



Strux

Ultimate Protection Acoustic Barriers

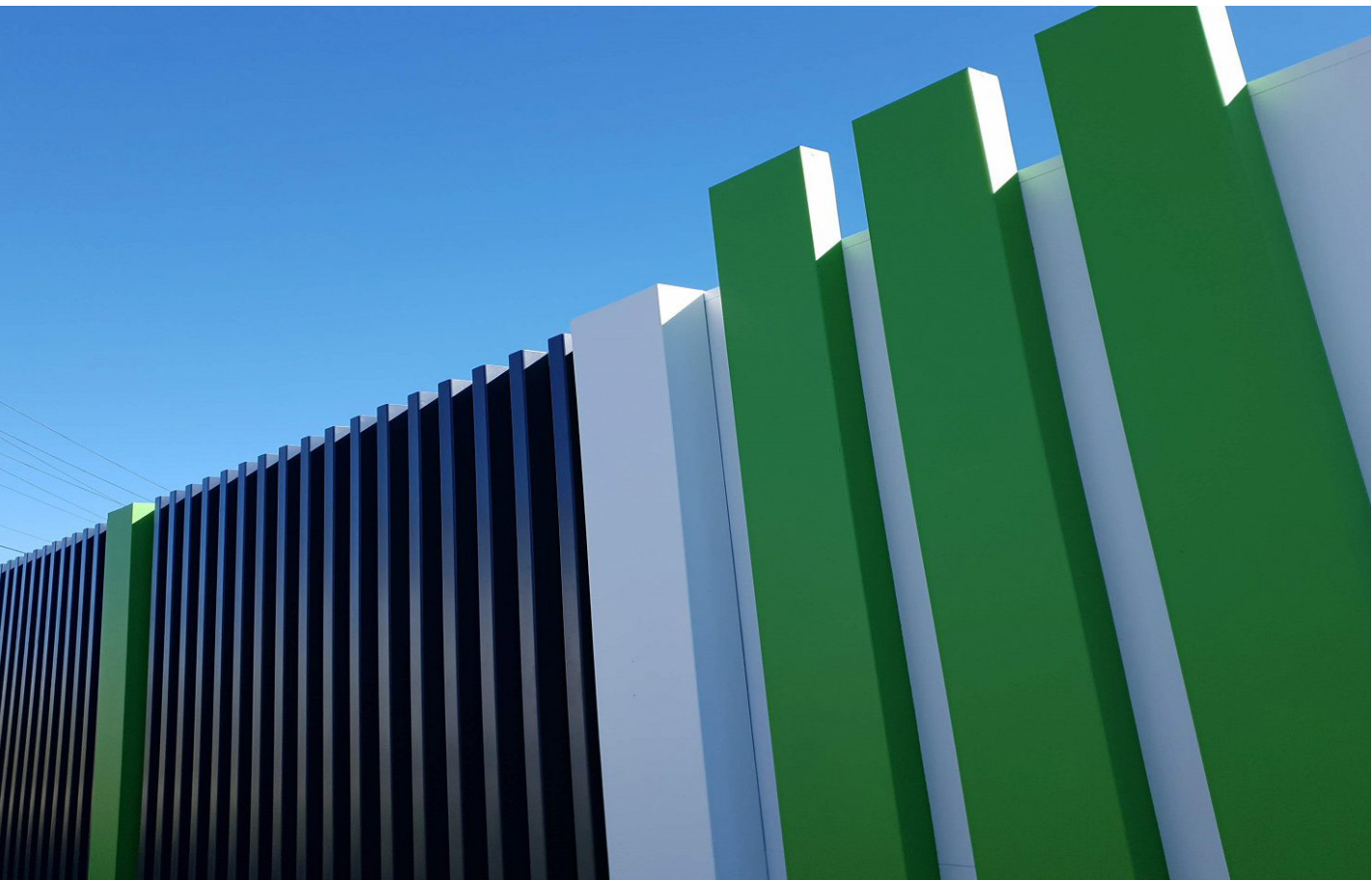
Give your acoustic barrier the ultimate protection from impact, vandals, vehicles or machinery with Wallmark's ultimate Strux upgrade.

Engineered with high impact composite technology, Strux upgrades your barrier wall investment to withstand the hardest knocks, minimising damage and maximising the lifespan of your wall.

With primary applications on busy roadways, railway perimeters, car parks, commercial centres, building sites and walls subject to vandalism, Strux panels can be integrated into the full range of Wallmark Smart Wall Solutions.

Panel Selection Guide

	AcoustX	RetainX	StruX
Residential	✓	✓	X
Commercial	✓	✓	✓
Noise Reduction	✓	✓	✓
Weather Resistant	✓	✓	✓
Pre-Painted Option	✓	✓	✓
Fire Retardant	✓	✓	✓
Fire Rated	X	X	X
Panel Length (m)	2.4 / 3	2.4	2.4 / 3
Panel Height (m)	0.9 / 1.2	0.9 / 1.2	0.9 / 1.2
Panel Thickness (mm)	75	75	75
Reflective	✓	✓	✓
Absorptive	X	X	X
Retaining	X	✓	X
Impact Resistant	X	X	✓



Panels

The Wallmark Product Range

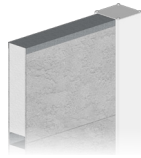
We offer four core products that meet the needs for a variety of residential and commercial applications.

EvoWall

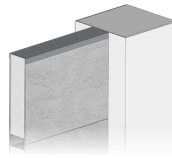
UrbanWall

Techniko

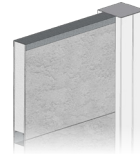
DuneWall



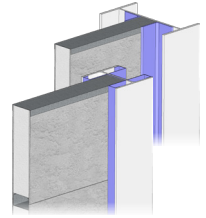
Sleek Modern Privacy Wall



Masonry Style Feature Wall



Modular Panel Fence



Custom Height Acoustic Wall

Residential	✓	✓	✓	X
Commercial	✓	✓	✓	✓
Alloy Posts - Pre Primed	100mm	-	-	-
Steel Posts- Galvanised Steel	X	240mm	100mm	Pre-engineered Custom
Panel Thickness	75mm	75mm	50mm	75 / 80 / 100mm
Slat Compatible	✓	✓	✓	✓
Maximum Panel Length	3m	3m	2.4m	4.2m
Pre-engineered to Height	2.4m	3m	3m	12m

The Wallmark Advantage



Innovative Solutions

We offer custom designed solutions for a wide range of industry sectors and applications.



Full Accreditation

Our products been approved by NATA. Our reflective noise walls also boast an acoustic rating of RW28 and our absorptive walls an NRC rating of 0.95.



Project Collaboration

We manage your project from the design process right through to completion using world class tradespeople and consultants.



Australian Made

Over 2 decades of trust and experience in the Australian construction industry.

At Wallmark, we recognise that when it comes to architectural wall solutions, one design does not fit all. We look forward to working hand in hand with you to solve your acoustic privacy wall challenges.

To find out more about our Smart Acoustic Wall Solutions visit www.wallmark.com.au or call **02 6057 7600**.

Wallmark

18839 211013