



RESIDENTIAL

Acoustic and Feature Fencing

COMMERCIAL

Noise Barriers



Welcome to Wallmark

Wallmark specialises in modular acoustic panel fencing and noise barrier solutions for residential, commercial and industrial applications. We produce a range of innovative, economical and stylish wall systems that are designed for Australian conditions, manufactured from quality materials, and fast to install.

Choose between our steel Techniko, Dunewall, Urbanwall and aluminium Evowall product ranges, to satisfy your current requirements and can be enhanced to suit any application from residential to heavy industry. Our sound reducing wall panels are finished with a weather resistant, hard wearing, smooth surface with no gaps. Spray, roll or brush the wall to your own pleasing colour and texture. The walls have been pre-engineered to suit a variety of wind regions including height, footing sizes and post spacings. Installation is easy - drill or dig a row of holes, concrete the posts in and assemble your wall with minimal site disruption to achieve a solid prestige result!

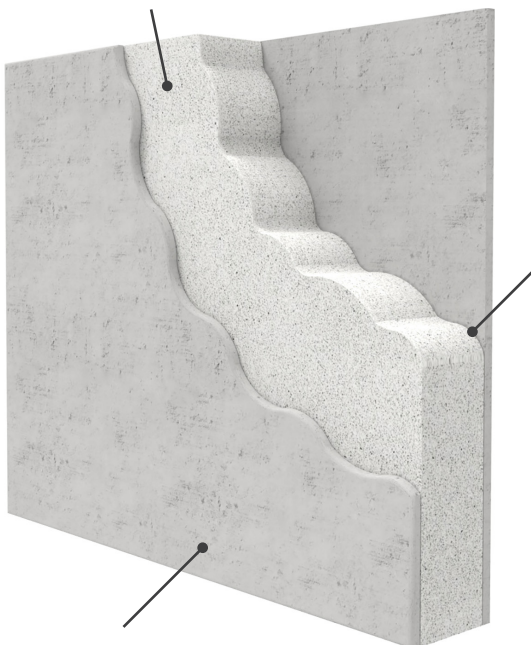
The Panel Core

Termite resistant

Superb compressive strength to weight ratio

Absorbs minimal water - no mould or rotting

Treated with Fire Retardant



The Panel Bond

Full surface contact
adhesion

High grade
Polyurethane glue

The Panel Outer

Fire resistant & non-combustible

Strong, impact resistant surface

Smooth finish - easy to apply paint or render

Maintenance Free

Mass: 15kg/m²

Thickness: 75mm

Panel Height: 900 or 1200mm

Length: up to 3000mm

Acoustic Rating: Rw 28

Wind Region Rating: to C3

Warranty: up to 10 years

The Quiet Advantage

Our wall panels are constructed from a very strong composite combination of Fibre Cement sheeting surrounding an Expanded Polystyrene core, creating excellent sound deadening properties. Wallmark has had a complete wall section tested correctly and certified to AS 1191-2002. Testing data sheets and our RMIT Transmission Loss Sound Report are available on request. The panels can be easily cut or shaped on site using a circular or hand saw.



The Wallmark Product Range

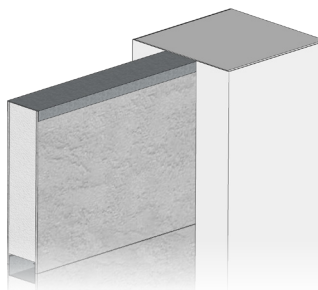
We offer four core products that meet the needs for a variety of residential and commercial applications.



EvoWall

**Sleek Modern
Privacy Wall**

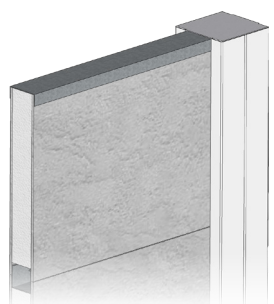
Page 4



UrbanWall

**Masonry Style
Feature Wall**

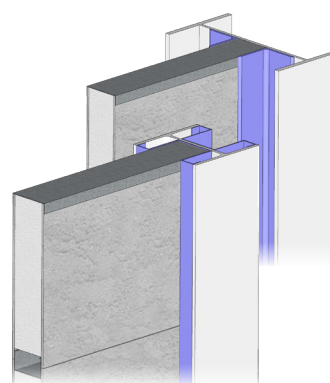
Page 14



Techniko

**Modular
Panel Fence**

Page 22



DuneWall

**Custom Height
Acoustic Wall**

Page 30

EvoWall

UrbanWall

Techniko

DuneWall

Residential	✓	✓	✓	X
Commercial	✓	✓	✓	✓
Alloy Posts - Pre Primed	✓	-	-	-
Steel Posts- Galvanised Steel	X	240mm	100mm	Pre-engineered Custom
Panel Thickness	-	75mm	50mm	75 / 80 / 100mm
Slat Compatible	✓	✓	✓	✓
Maximum Panel Length	3m	3m	2.4m	4.2m
Pre-engineered to Height	-	3m	2.4m	12m



EvoWall

Sleek Modern Privacy Wall

When space is tight, style is important and privacy is a must, the Evowall modular wall system comes into its own.

Evowall delivers an attractive, cost effective alternative to block walls. The hard wearing acoustic wall panels safeguard you from noisy neighbours. The modular assembly ensures installation is a breeze and the smart design delivers a crack free finish for the lifetime of the wall.

The Evowall modular wall system is great for around saltwater pools and coastal locations, the non-corrosive pre-primed 100mm alloy posts and capping's ensure your wall will stand the test of time.

A multitude of finishes can be easily applied including paint, render paint and render to achieve your first class finish of choice and slats, lighting, stone, letterboxes and more can be readily integrated for a striking contemporary finish.

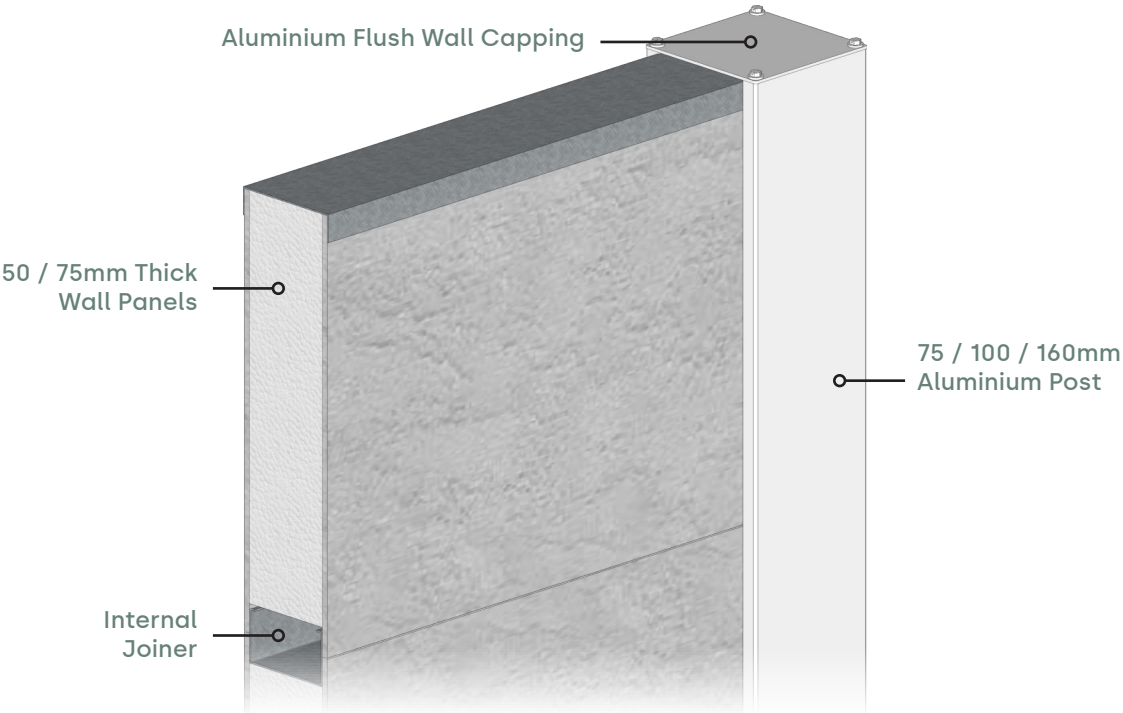
Pre-engineered to 2.4m, Evowall comes with a 10 year structural warranty. Evowall guarantees a sleek, modern privacy wall solution for discerning home and business owners.

Whether you install DIY or with your preferred local contractor, work with the team at Wallmark for factory direct personalised service and great advice.

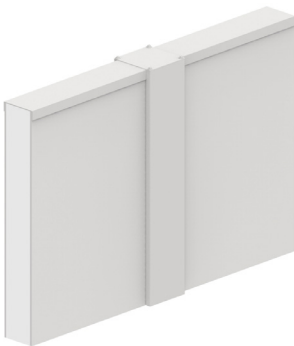
Specifications

Wall Height	Up to 4000mm
Post Size	75 x 75mm 100 x 100mm 160 x 160mm
Post Material	Aluminium
Panel Thickness	50 or 75mm
Panel Length	2400 or 3000mm

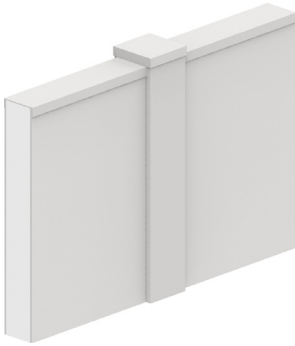
Features & Options



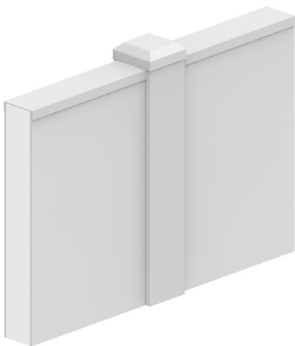
Capping Styles



Flush Wall Capping
Horizon Post Cap

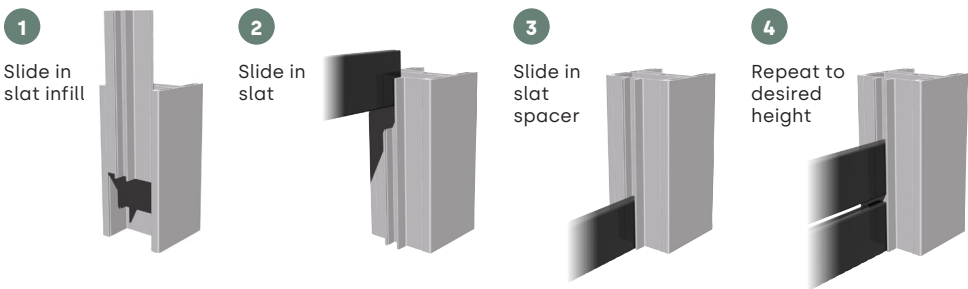


Flush Wall Capping
Plateau Post Cap



Flush Wall Capping
Tableland Post Cap

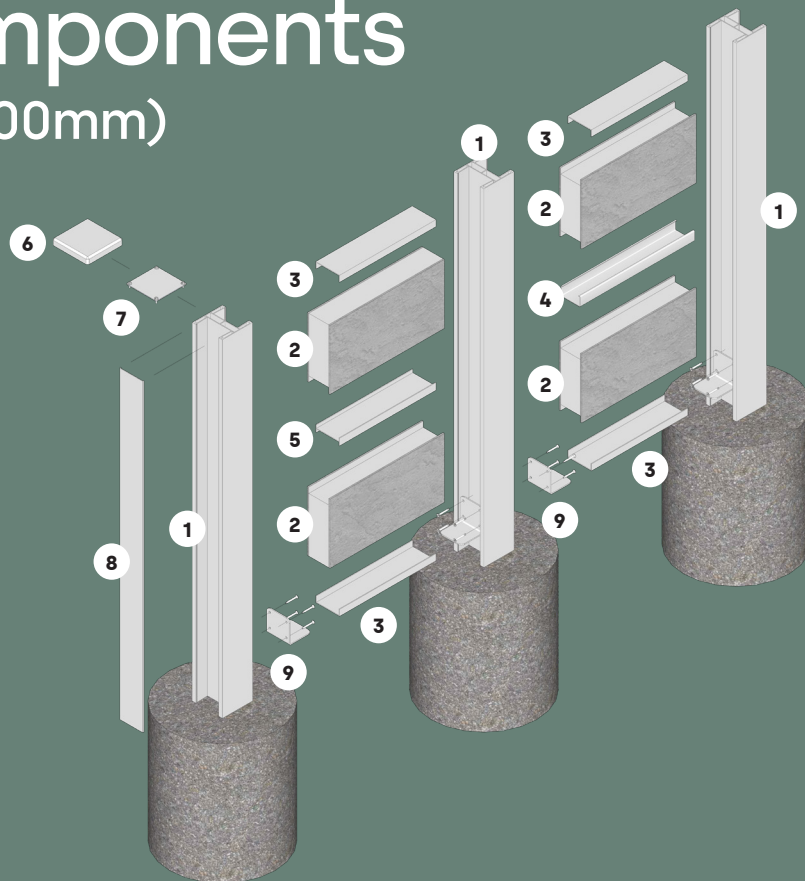
Modular Slat System



Simple Installation
Fits 16mm Slats or Panelling
Easy To Change Spacing
No Spider Traps

Components

(75 & 100mm)



Posts



1. Alloy Post

Height Options (mm)
75 | 100 | 160
Length Options (mm)
2300 | 2700 | 3000

Capping Options



3. Alloy Flush Capping

AFC > 2350 | 2950

Infill & Brackets



8. Alloy Infill

AINF 2400



9. Wall Support Bracket

WSB

Panels



2. Wall Panel

Single & Double Rebate
WP 924 > 900H x 2400L
WP 1224 > 1200H x 2400L
WP 930 > 900H x 3000L
WP 1230 > 1200H x 3000L

Joiner Options



4. Gal Internal Panel Joiner

PJT > 2350 | 2950



5. Alloy Panel Joiner

PJT > 2350 | 2950

Alloy Post Cap Options



6. Alloy Plateau Post Cap

APC100P



7. Alloy Horizon Post Cap

APC100H

All Measurements in mm

Technical Information (75 & 100mm)

Maximum Post Height & Wind Regions

Panel Length	Wall Height			
	1200	1800	2100	2400
2400	C1	N3	N2	N2
3000	N3	N2	N2	-

Footing Depths for 300mm Diameter Footing for various Wind Regions

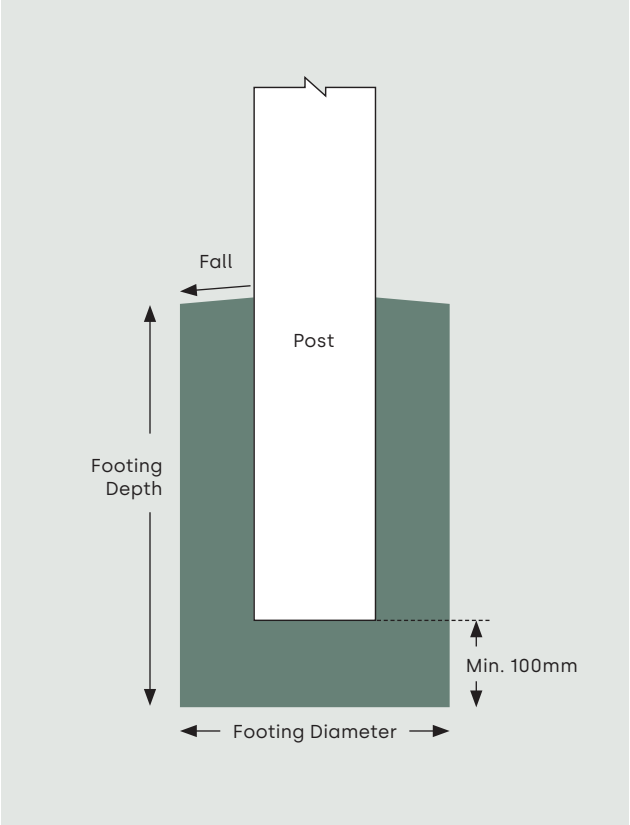
75mm Post

Panel Length	Wall Height		
	1200	1800	2100
2400	N2 - 600	N2 - 600	N2 - 700
	N3 - 600	N3 - 700	-
3000	-	-	-

100mm Post

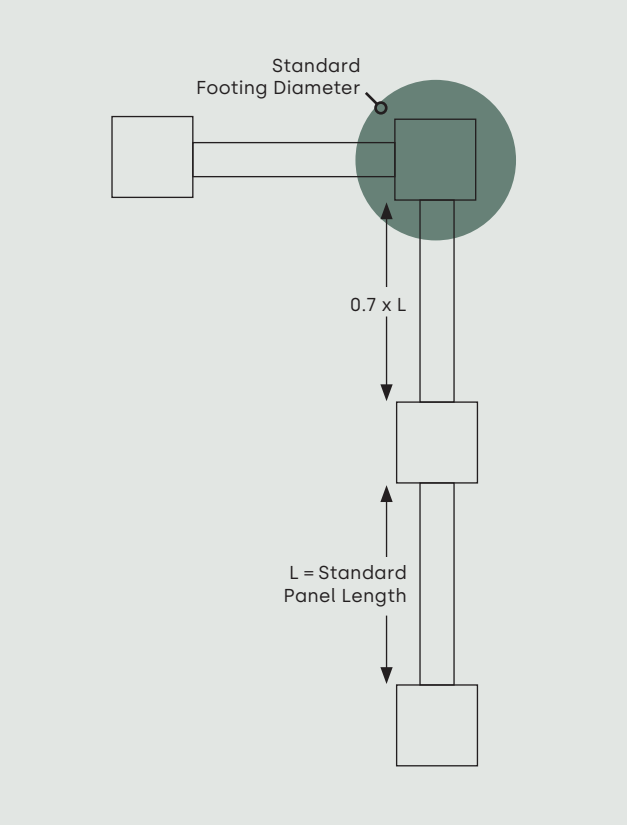
Wall Height			
1200	1800	2100	2400
N2 - 600	N2 - 600	N2 - 700	N2 - 700
N3 - 600	N3 - 700	-	-
C1 - 700	-	-	-
N2 - 600	N2 - 600	N2 - 700	-
N3 - 600	-	-	-

Footing Detail



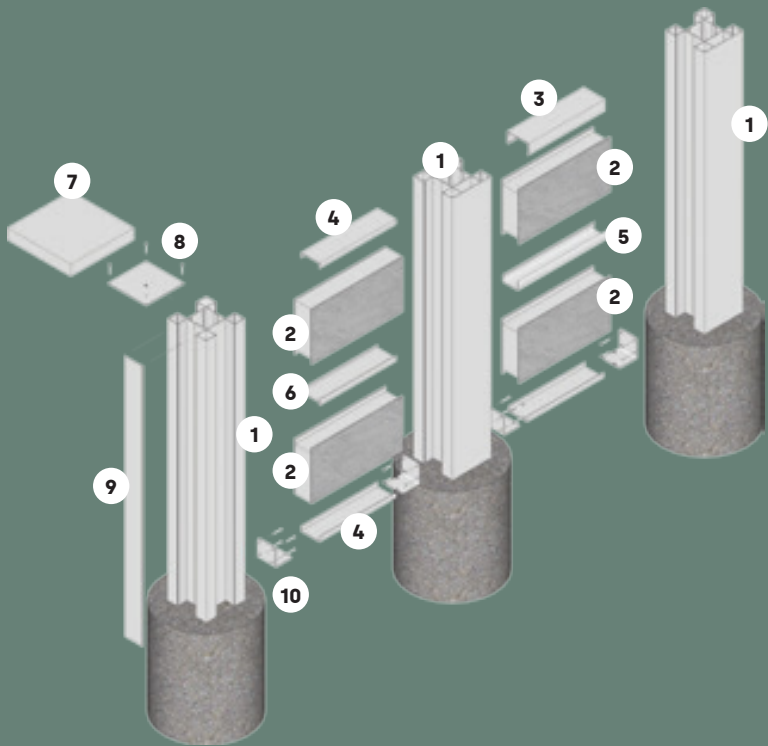
NOTE Footing Depths are based on Firm Clay. Engineering advice must be sought on Footing Depths for all other soil types.

Post Spacing



All Measurements in mm

Components (160mm)



Posts



1. Alloy Post
2-Way A162CE, 3-Way A1623W,
4-Way A1624W
450 | 900 | 1200 | 1800 | 2100 |
2400 | 2700 | 3300 | 3600H

Capping Options



3. Alloy Box Capping
ABC > 2350 | 2950



4. Alloy Flush Capping
AFC > 2350 | 2950

Infill & Brackets



9. Alloy Infill
AINF 450 | 900 | 1200 | 1800
| 2100 | 2400 | 2700 | 3300 |
3600H



10. Wall Support Bracket
WSB

Panels



2. Wall Panel
Single & Double Rebate
WP 924 > 900H x 2400L
WP 1224 > 1200H x 2400L
WP 930 > 900H x 3000L
WP 1230 > 1200H x 3000L

Joiner Options



5. Gal Internal Panel Joiner
PJT > 2350 | 2950



6. Alloy External Panel Joiner
PJT > 2350 | 2950

Alloy Post Cap Options



7. Alloy Plateau Post Cap
APC100P



8. Alloy Horizon Post Cap
APC100H

All Measurements in mm

Technical Information (160mm)

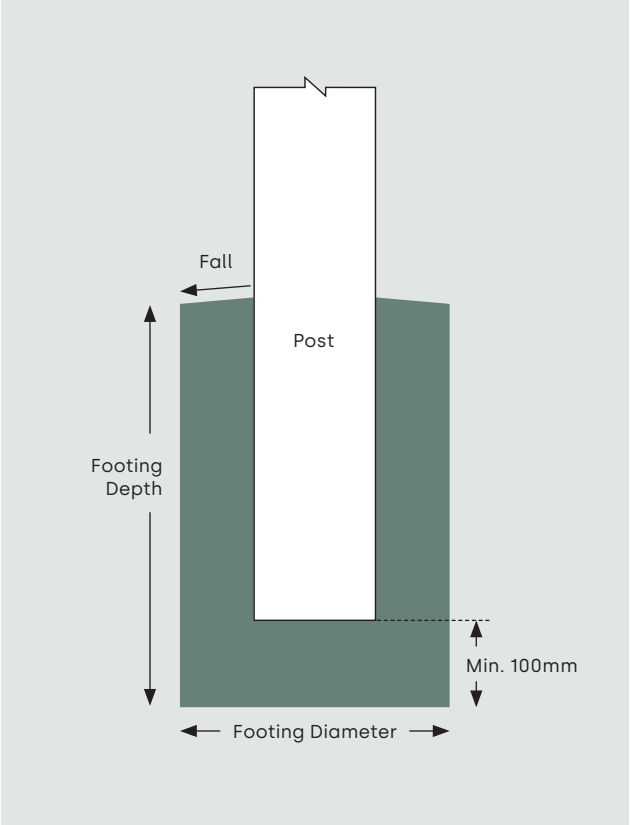
Maximum Post Height & Wind Regions

Panel Length	Wall Height							
	1800	2100	2400	2700	3000	3300	3600	4000
1800	-	-	-	-	-	-	-	N2
2400	C2	C2	C1	C1	N3	N2	N2	-
3000	N3	N3	N3	N3	N2	-	-	-

Footing Depths for 350mm Diameter Footing for various Wind Regions

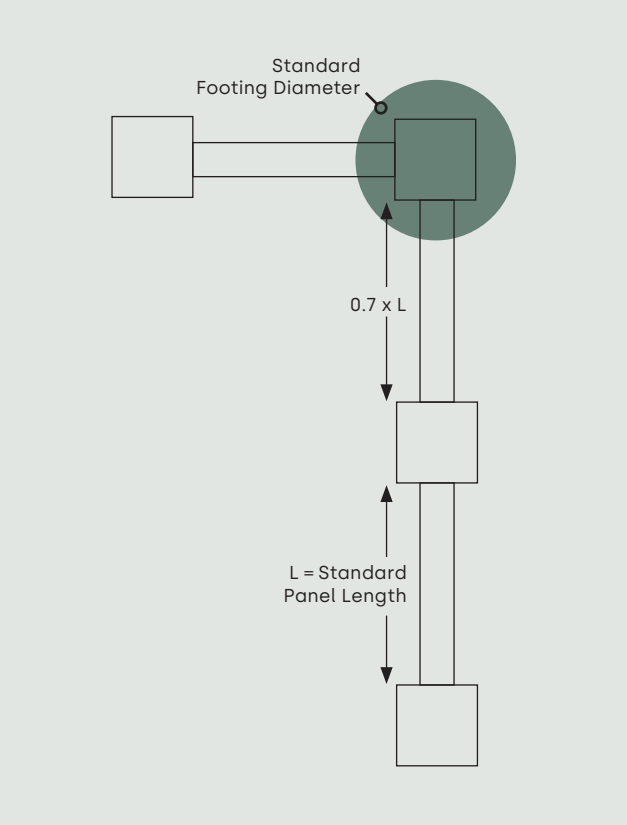
Panel Length	Wall Height							
	1800	2100	2400	2700	3000	3300	3600	4000
1800	-	-	-	-	-	-	-	N2 - 1500
2400	N2 - 600	N2 - 700	N2 - 750	N2 - 850	N2 - 950	N2 - 1050	N2 - 1100	-
	N3 - 750	N3 - 900	N3 - 950	N3 - 1050	N3 - 1150			
	C1 - 900	C1 - 1000	C1 - 1100	C1 - 1200				
	C2 - 1000	C2 - 1200						
3000	N2 - 650	N2 - 750	N2 - 850	N2 - 950	N2 - 1050	-	-	-
	N3 - 800	N3 - 950	N3 - 1100	N3 - 1200				

Footing Detail



NOTE Footing Depths are based on Firm Clay. Engineering advice must be sought on Footing Depths for all other soil types.

Post Spacing



All Measurements in mm

Case Study



EvoWall secures acoustic boundary with over 25dB reduction.

Strzelecki Residential Estate

Problem

With the Strzelecki residential estate bordering more than a kilometre of the 4 lane Princess Highway, an aesthetic acoustic wall solution was required to reduce noise for residents.

Solution

Wallmark engineered the EvoWall Acoustic Barrier System to create a distinctive and secure perimeter for the estate adjoining the highway. The EvoWall boundary solution is designed to exceed Main Road Standards. Residents are sure to appreciate the significant reduction in road noise on this busy highway stretch through Gippsland.

Key advantages

- Pre-engineering and certification means solutions are found fast.
- Walls offer the same attractive finish on each side.
- Can be bolted onto existing concrete (in home situations)

Gallery





Gallery





UrbanWall

Masonry Style Feature Wall

Whether you want to enhance the value of your home or to protect your business, the Urbanwall modular walling system brings style and sophistication to your property at a fraction of the cost of traditional block walls.

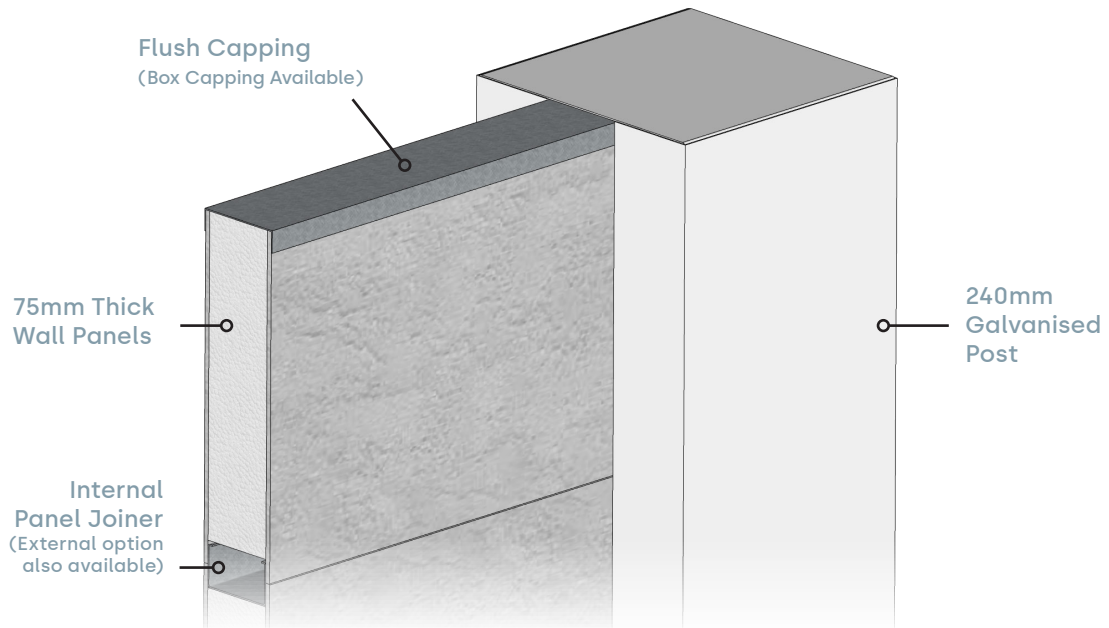
Urbanwall's 240mm pillar style post and cap system with acoustic wall panels delivers a contemporary masonry feel to accentuate your property and shield you from noisy neighbours and watchful eyes. Best of all, the modular assembly ensures hassle free installation with minimal site disruption and the smart design delivers a crack free finish for the lifetime of the wall.

Pre-engineered to 3m, the Urbanwall modular fencing system is built from quality Australian products to handle Australia's harshest conditions.

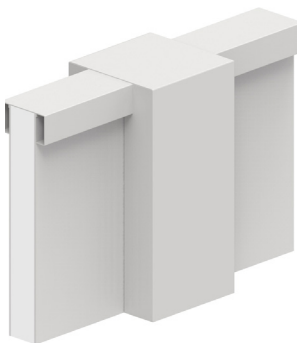
Spray, roll or render your Urbanwall to your colour pallet for a first class result and emphasise the details with clever lighting, slat or stone inlays to integrate with your designer landscape.

You can add value, privacy and peace and quiet to your home or business with Urbanwall prestige masonry style feature walls. Whether you install DIY or with your preferred local contractor, work with the team at Wallmark for factory direct personalised service and great advice.

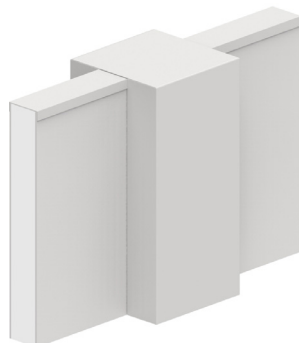
Features & Options



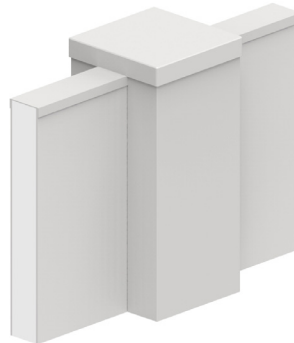
Capping Styles



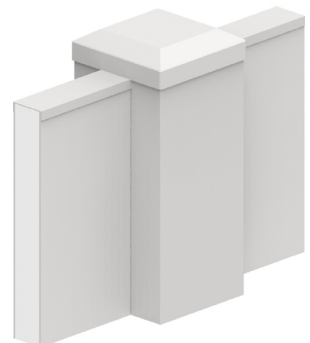
Box Wall Capping
Horizon Post Cap



Flush Wall Capping
Horizon Post Cap

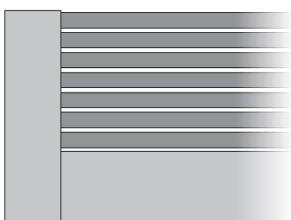


Flush Wall Capping
Plateau Post Cap

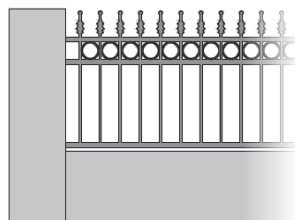


Flush Wall Capping
Tableland Post Cap

Adaptions



Slat Infill



Classic Infill

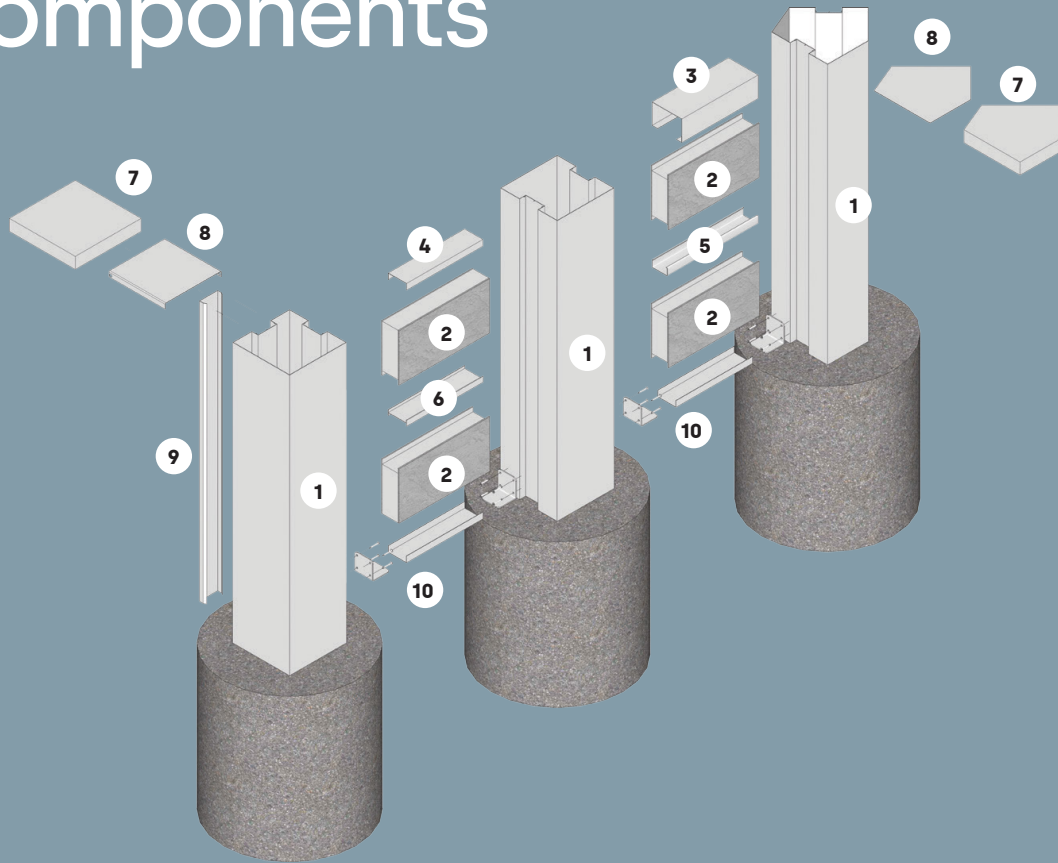


Flat Top Infill



Oxley Plain Infill

Components



Posts



1. Gal Post

1450 - 1850 | 2150
2550 - 2950 | 3250
3650 - 3950

Capping Options



3. Gal Box Capping

BCZ > 2370 | 2970



4. Gal Flush Capping

FCZ > 2400 | 3000

Additional



9. Gal Infill

ZINF 300 | 450 | 600 | 900 | 1200
| 1500 | 1800 | 2100 | 2400 | 2700
| 3000H



10. Wall Support Bracket

WSB

Panels



2. Wall Panel

Single & Double Rebate
WP 924 > 900H x 2400L
WP 1224 > 1200H x 2400L
WP 930 > 900H x 3000L
WP 1230 > 1200H x 3000L

Joiner Options



5. Gal Internal Panel Joiner

PJT > 2395 | 2995



6. Alloy External Panel Joiner

APJ > 2350 | 2950

Alloy Post Cap Options



7. Plateau Post Cap

PCP240



8. Horizon Post Cap

PCH240

All Measurements in mm

Technical Information

Maximum Post Height & Wind Regions

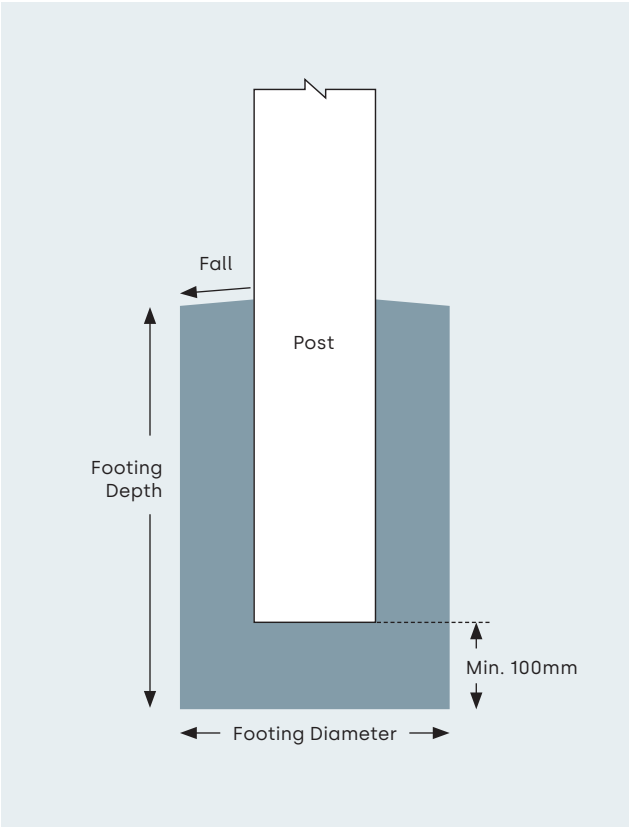
Panel Length	Wall Height				
	1200	1800	2100	2400	2700
2400	C2	C2	C2	C1	C1
3000	N3	N3	N3	N3	N3

Footing Depths for 450mm Diameter Footing for various Wind Regions

Panel Length	Wall Height				
	1200	1800	2100	2400	2700
2400	N2 - 700	N2 - 800	N2 - 850	N2 - 950	N2 - 950
	N3 - 800	N3 - 900	N3 - 1000	N3 - 1000	N3 - 1100
	C1 - 900	C1 - 1000	C1 - 1000	C1 - 1100	C1 - 1200
	C2 - 900	C2 - 1050	C2 - 1150	-	-
3000	N2 - 750	N2 - 850	N2 - 950	N2 - 950	N2 - 1050
	N3 - 850	N3 - 1000	N3 - 1000	N3 - 1000	N3 - 1200

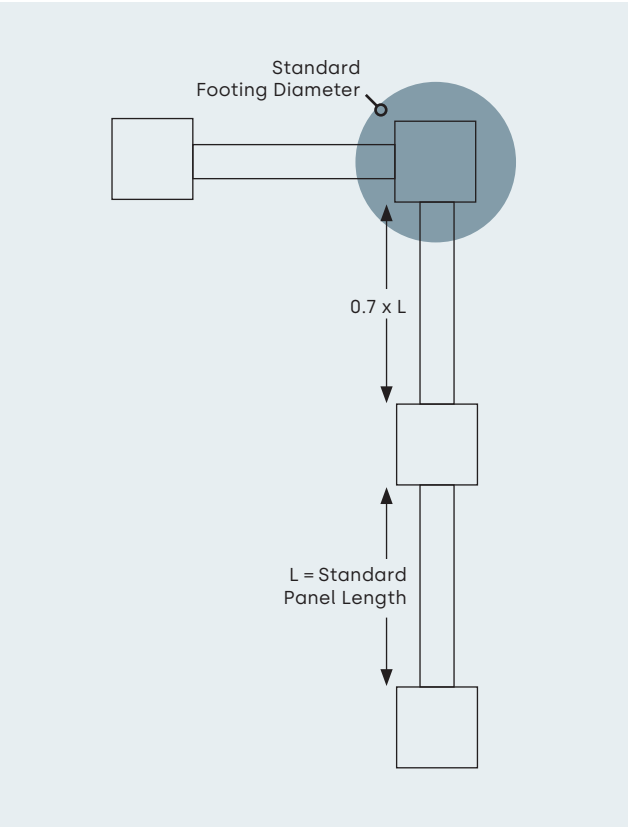
NOTE N2 - 700 Denotes 450 Diameter x 700 Deep Footing for Wind Region N2

Footing Detail



NOTE Footing Depths are based on Firm Clay. Engineering advice must be sought on Footing Depths for all other soil types.

Post Spacing



All Measurements in mm

Case Study



77m of Urbanwall delivered in under 7 days.

Ultimate Privacy

Problem

This family was in need of a cost-effective solution to block the view from the road that runs directly around the back of their house above them. They discovered that the cost of a brick wall was nearly four times their allowed budget. Along with this, people from the road could see straight into their pool.

Solution

Urbanwall was perfect for the job as it was cost-effective and exceeded privacy expectations. The wall was installed at 77m long and 2.4m high. The install was complete within six days even though there was a difficult landscape and removal of old fencing.

Key advantages

- Difficult slope- No Problem
- Prestige Finish
- Immediate Privacy
- Fast install
- Cost-effective alternative

Gallery





Gallery





Techniko

Modular Panel Fence

Whether you want to enhance the value of your home or to protect your business, the Techniko modular fencing system brings style and sophistication to your property at a fraction of the cost of traditional block walls.

Best of all, the modular assembly ensures hassle-free installation with minimal site disruption and the smart design delivers a crack free finish for the lifetime of the wall.

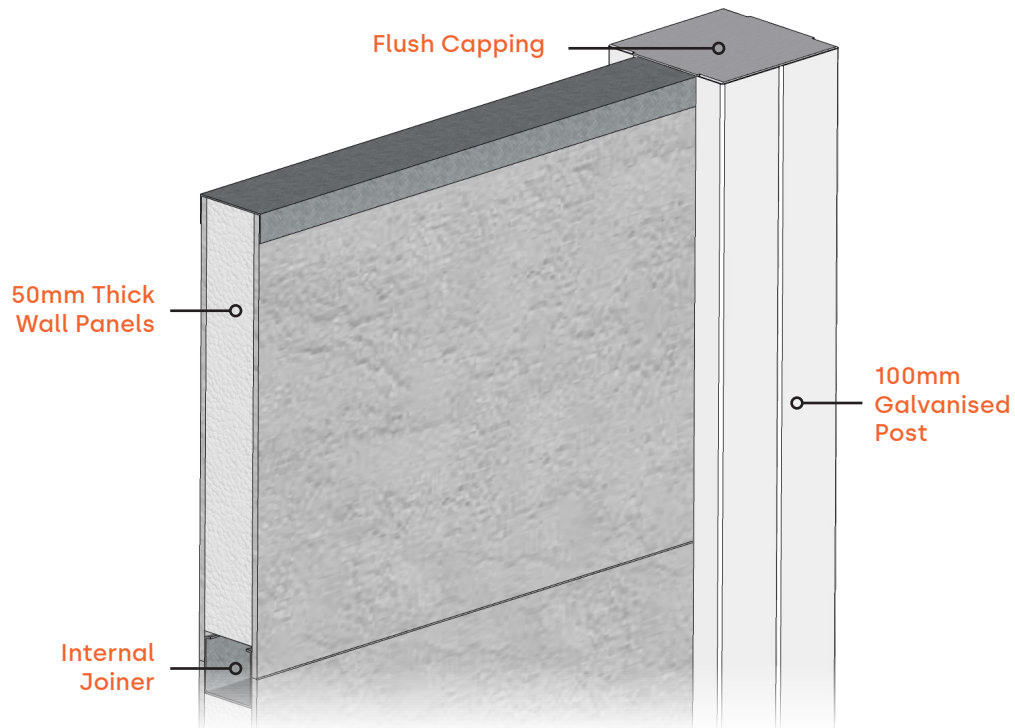
Pre-engineered up to 2.4m, the Techniko modular fencing system is built from quality Australian products to handle Australia's

harshest conditions. You can add value, privacy and peace and quiet to your home or business with Techniko prestige masonry style feature fences.

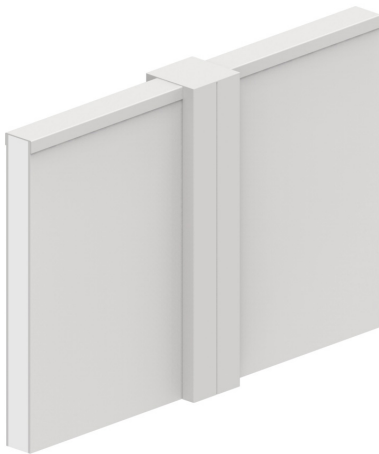
Whether you install DIY or with your preferred local contractor, work with the team at Techniko for factory direct personalised service and great advice

Techniko

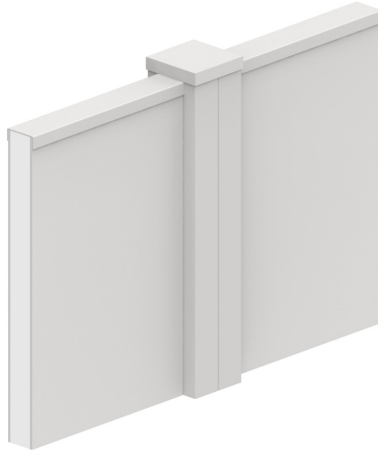
Features & Options



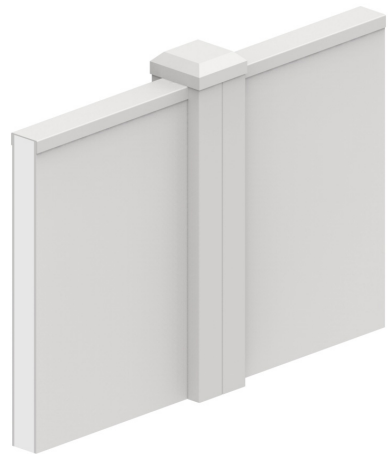
Capping Styles



Flush Wall Capping
Horizon Post Cap

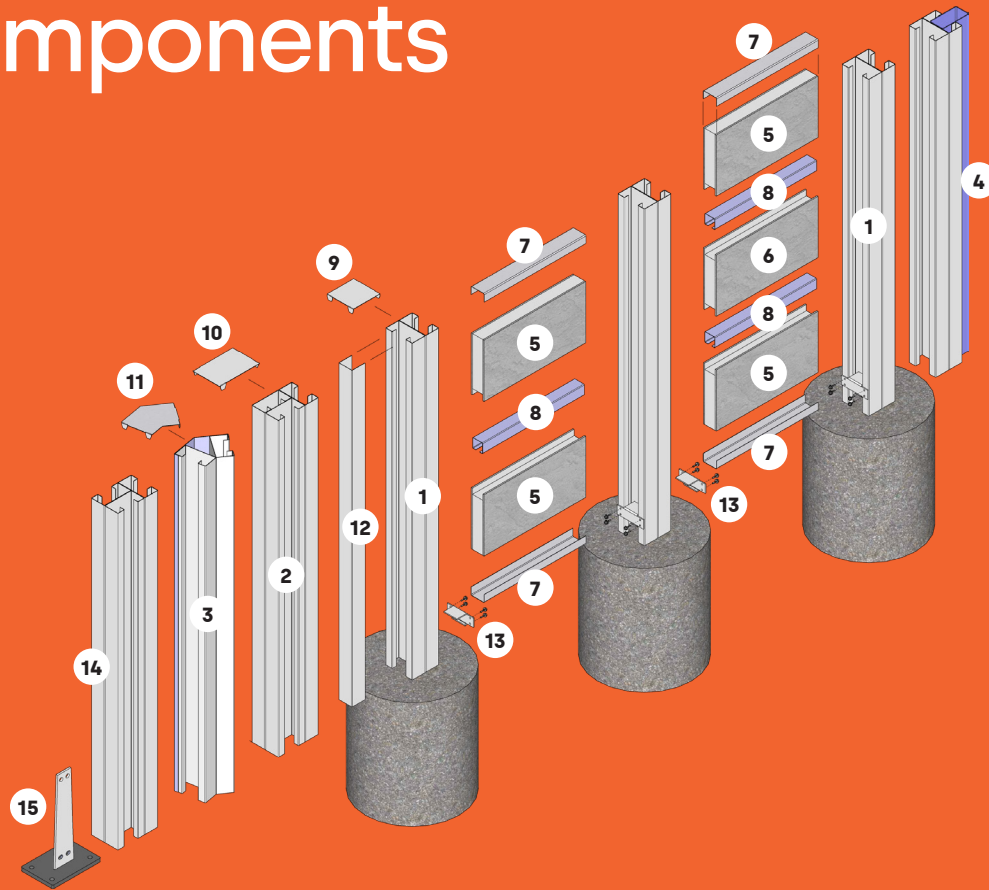


Flush Wall Capping
Plateau Post Cap



Flush Wall Capping
Tableland Post Cap

Components



Posts



1. Centre Post
TK100CE
900/1200/1800/2100/
2400/2700/3000 High



2. Corner Post
TK100CP
900/1200/1800/2100/
2400/2700/3000 High



3. Angle Post
TK100AN
900/1200/1800/2100/
2400/2700/3000 High



4. Gate Post
TKGPOST
900/1200/1800/2100/
2400/2700/3000 High

Panels



5. Wall Panel Single Rebate
WP50
900H x 2400W
1200H x 2400W



6. Wall Panel Double Rebate
WP50D
900H x 2400W
1200H x 2400W

Capping / Joiner



7. Flush Capping
FC5024



8. Internal Panel Joiner
PJT5024

Post Caps



9. Post Cap
PCTK100



10. Corner Post Cap
PCTK150



11. Angle Post Cap
PCTKAN

Additional



12. Post Infill
ZINF50
1800/2100/2400/2700/3000



13. Wall Support Bracket
WSBT



14. Tee Post
TK100T



15. Base Plate
TKBDB

All Measurements in mm

Technical Information

Maximum Post Height & Wind Speeds

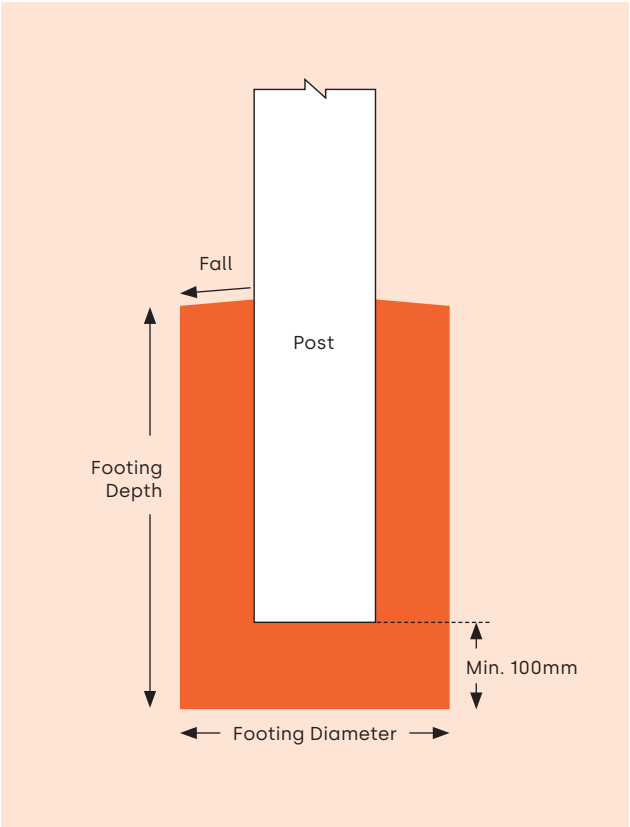
Panel Length	Wall Height			
	1800	2100	2400	3000
2400	50m/s	50m/s	40m/s	34m/s

Minimum Footing Depths for 2400mm Panels, 300mm Diameter Footings

Wind Speed	Wall Height					
	1200	1500	1800	2100	2400	3000
29m/s	600	600	600	600	600	800
34m/s (N1)	600	600	600	600	700	900
40m/s (N2)	600	600	600	700	800	-
50m/s (N3/C1)	600	700	800	900	-	-

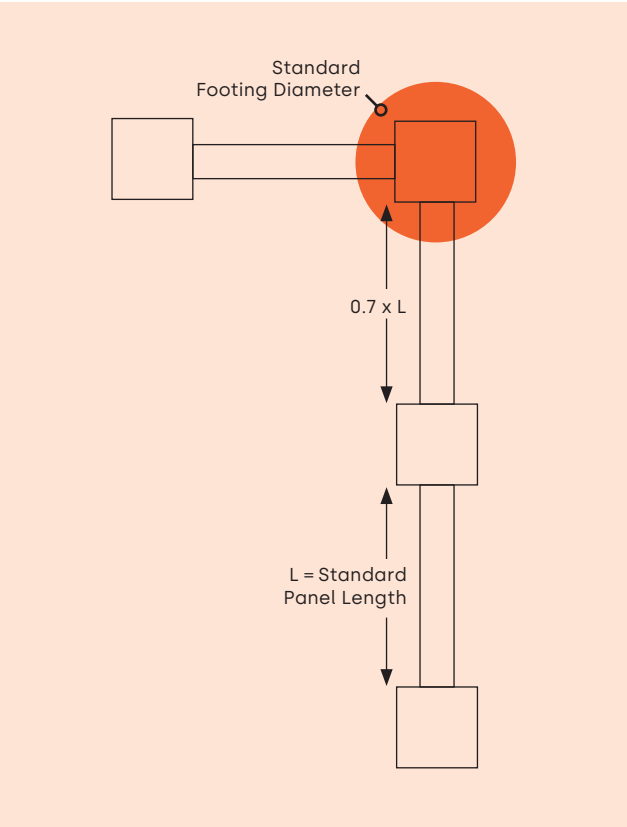
NOTE Design assumes there is firmly compacted soil at surface around footings. Corner and Angle Post Footing Diameter must be a minimum of 400mm.

Footing Detail



NOTE Footing Depths are based on Firm Clay. Engineering advice must be sought on Footing Depths for all other soil types.

Post Spacing



All Measurements in mm

Case Study



Food Precinct and Brewery

Brunswick, Victoria

Wallmark was approached by developers looking to turn an old run-down premises into an edgy, urban food precinct and brewery.

Using recycled industrial building supplies they created a vibrant, interesting and colourful space that reflected their brand.

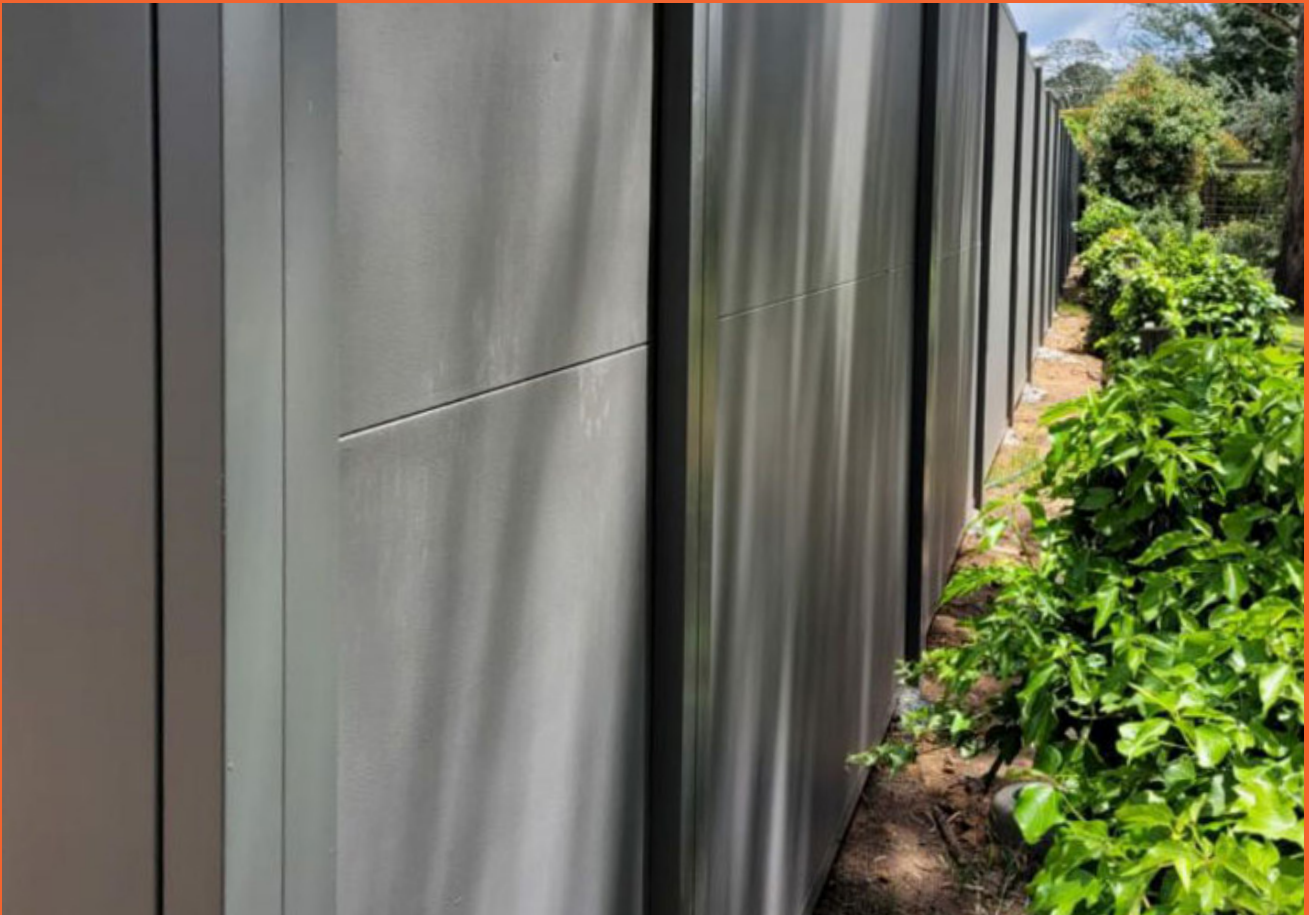
Wallmark was approached to supply a fence that helped the acoustic problems faced by all food and beverage outlets, and also provided a 132m long, 3m high blank canvas to showcase local artists and their wall art.

The Techniko wall at 4 Pines provides so much inspiration to many, as it shows what can be achieved when you think inside the fence! The murals have become iconic in the area with many a selfie shot and shared!

Gallery







Gallery



DuneWall

Custom Height Acoustic Wall

Cranes are not required to fit the panels and the system ensures minimal site disruption, a real bonus for busy commercial and industrial operations. The smart modular design delivers a crack free finish for the lifetime of your Dunewall.

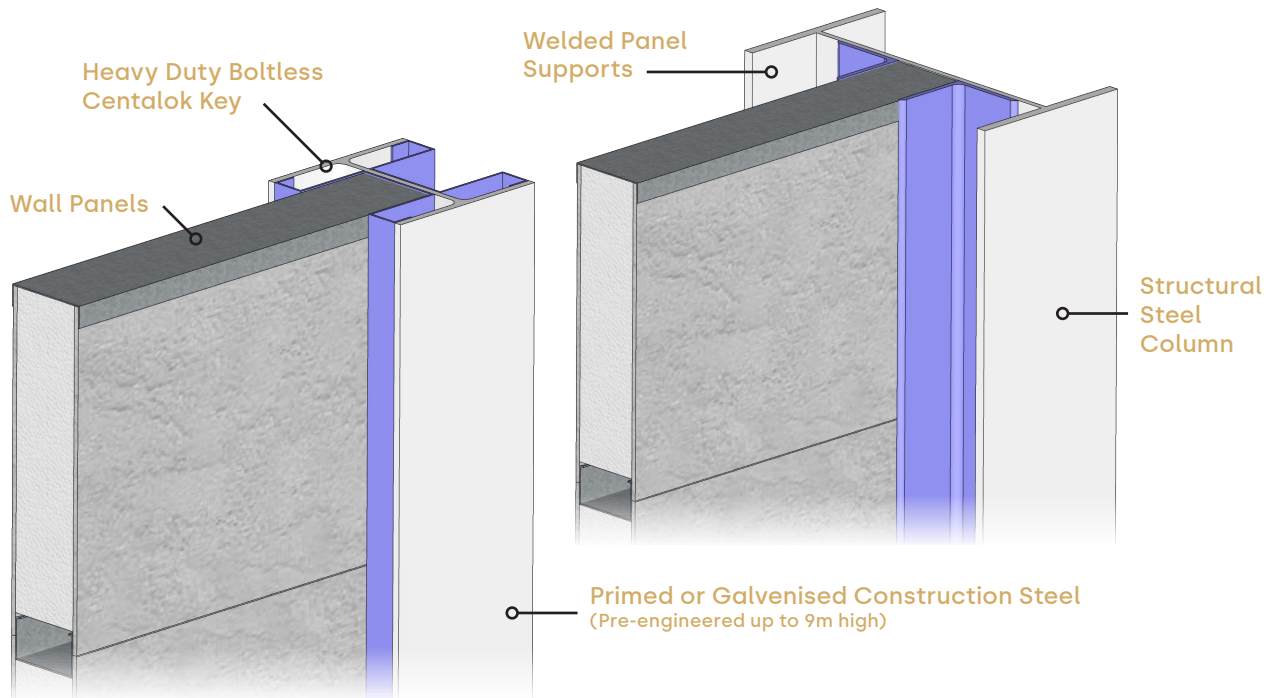
Give your acoustic barrier the ultimate protection from impact, vandals, vehicles or machinery with Wallmark's ultimate Strux upgrade. Engineered with high impact composite technology, Strux upgrades your noise barrier wall investment to withstand the hardest knocks, minimising damage and maximising the lifespan of your wall.

With primary applications on busy roadways, railway perimeters, car parks, commercial centres, building sites and walls subject to vandalism, Strux panels can be integrated into the full range of Wallmark Smart Wall Solutions.

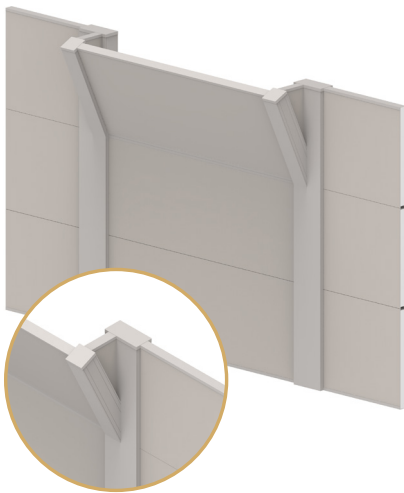
Features

- Cost Effective Alternative To Block & Tilt Wall Systems
- HDG Structural Steel Posts
- Pre-Engineered to 12m in Height
- Fast Install with Minimal Site Disruption
- Excellent Sound Reduction
- Light Weight Panels
- Looks The Same From Both Sides
- NATA Acoustically Tested and Certified to AS 1191-2002

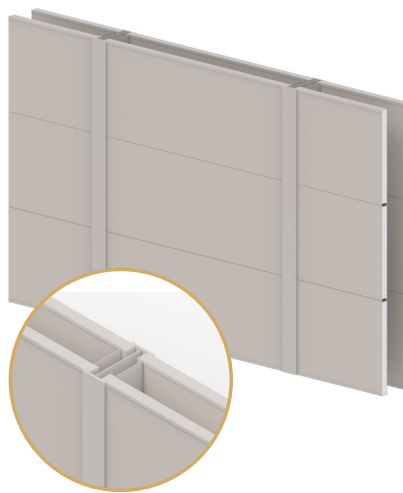
Features & Options



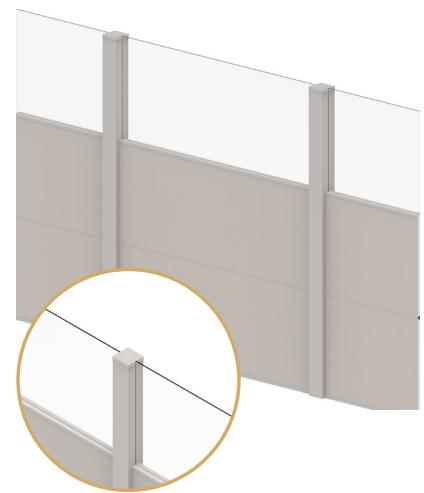
Options



Cranked Wall
Maximum noise reduction where height restrictions are required

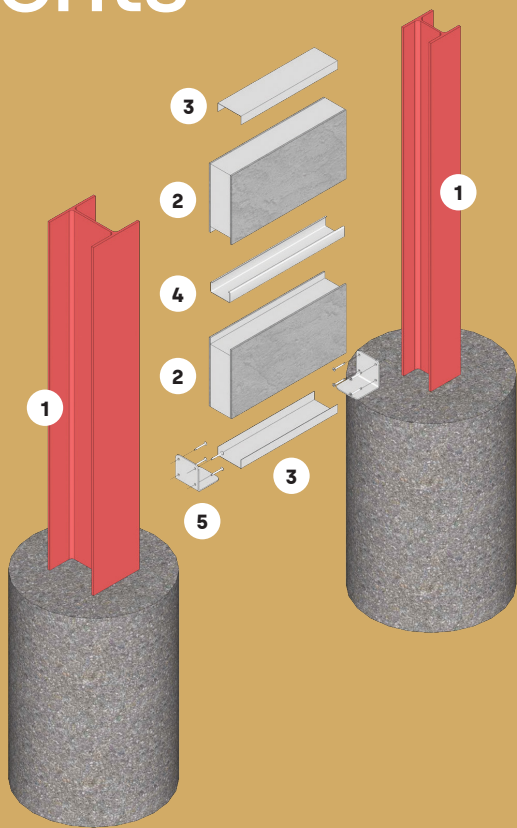


Double Wall
Extreme noise reduction attenuation



Plexiglass Wall
Prevents overshadowing without compromising noise attenuation

Components



Posts



1. Universal Post

Options

- 100 UC 14.8
- 150 UC 23.4
- 200 UB 25.4
- 310 UB 40.4
- 410 UB 59.7

Capping



3. Gal Flush Capping

FCZ > 2400 | 3000

Wall Support Bracket



5. Pre Primed Gal Wall Support Bracket

WSBZ

Panels



2. Wall Panel

Single Rebate

- WP 924 > 900H x 2400L
- WP 1224 > 1200H x 2400L
- WP 930 > 900H x 3000L
- WP 1230 > 1200H x 3000L

Joiner



4. Pre Primed Gal Internal Panel Joiner

PJT > 2350 | 2950

All Measurements in mm

Technical Information

Maximum Post Height & Wind Regions

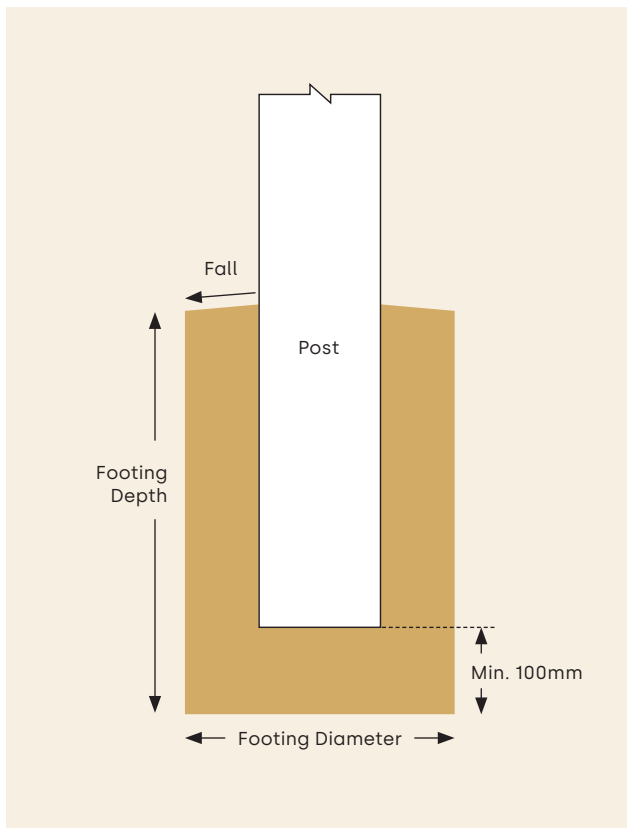
Panel Length	Wall Height				
	3000	3300	3600	3900	4200
2400	C2	C2	C2	C1	C1
3000	N3	N3	N3	N3	N3

Footings Depths for 450mm Diameter Footing for various Wind Regions

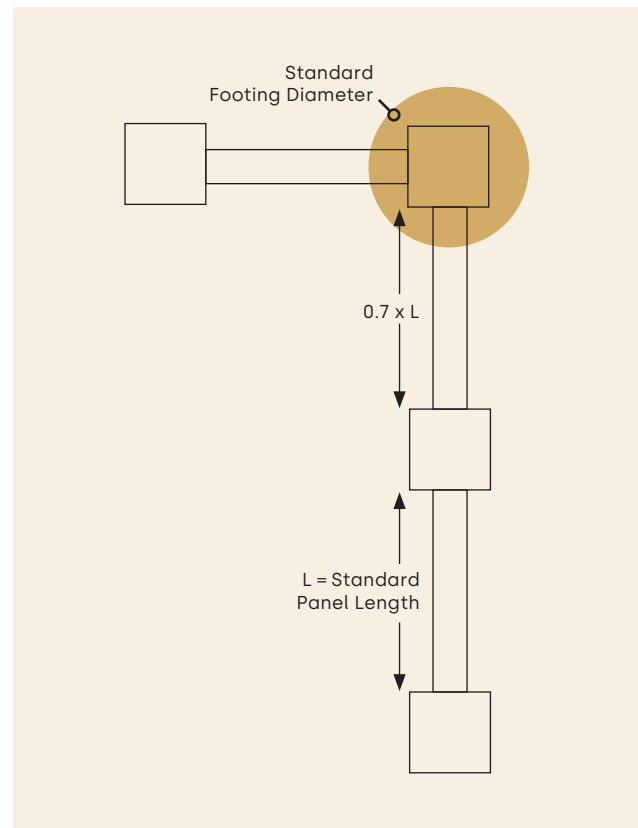
Panel Length	Wall Height				
	3000	3300	3600	3900	4200
2400	N2 - P1/1000	N2 - P1/1100	N2 - P1/1200	N2 - P1/1200	N2 - P1/1300
	N3 - P1/1200	N3 - P1/1300	N3 - P1/1400	N3 - P1/1500	N3 - P1/1600
	C1 - P1/1400	C1 - P1/1500	C1 - P1/1600	C1 - P1/1800	C1 - P1/1900
	C2 - P1/1700	C2 - P1/1800	C2 - P1/2000	-	-
3000	N2 - P1/1000	N2 - P1/1200	N2 - P1/1300	N2 - P1/1400	N2 - P1/1500
	N3 - P1/1300	N3 - P1/1500	N3 - P1/1600	N3 - P1/1700	N3 - P1/1800
	C1 - P1/1500	C1 - P1/1700	C1 - P1/1800	C1 - P1/1900	-
	C2 - P1/1800	-	-	-	-

NOTE P1/1.5 Denotes 350Ø bore pier, 1500mm deep into firm clay. Recommended footing depths are for terrain categories 2, 2.5 & 3

Footings Detail



Post Spacing



NOTE Footing Depths are based on Firm Clay. Engineering advice must be sought on Footing Depths for all other soil types.

All Measurements in mm



Thornhill Park

Design and Construct Project

Wallmark are the industry experts in providing cost-effective wall solutions for freeway and rail projects, housing developments, mining, and commercial projects. The team specialises in providing custom options suited to each individual project and their specific needs.

Our design and construct custom walls are acoustically rated, structurally capable and are built to last a lifetime. Our team work around your specific and custom needs with our experience ranging from heavy infrastructure to smaller commercial solutions.

Wallmark's experienced and professional team are capable of managing large multi-million-dollar projects including custom designs, full project management and quick time frames.

Thornhill Park Development Case Study

Housing development in Melbourne along the Western Freeway.

Wallmark was first approached by developers looking for a cost-effective solution that would be environmentally sound, structurally capable and provide effective noise control. After considering a few options, the decision was made to go ahead with the Cor-ten product and Wallmark design and construct service.

Wallmark's in-house project management team worked closely with the developer and consultants to comply with VIC roads and Melton City Council, with all certificates done and VIC roads approval within only a 2-week time frame. During this process, Wallmark worked alongside structural and geotechnical engineers, civil engineers, superintendents, and many other trades.

This project also presented large rock content and required concrete testing, which Wallmark organised and completed in a timely manner. Wallmark's team also worked closely with the client's own consultants to ensure other important factors, such as minimal environmental impact, were taken into consideration. Wallmark covered every part of the project including traffic management for the roads being impacted by the works. The site presented an additional challenge, having a high level of basalt rock content.

3 Months later, the project was 50% complete. The wall itself is 2.2kms long and ranges from 6m-14m high.

Gallery







Gallery

Panel Options



AcoustX

The quiet advantage

Our wall panels are constructed from a very strong composite combination of Fibre Cement sheeting surrounding an Expanded Polystyrene core, creating excellent sound deadening properties.

Wallmark has had a complete wall section tested correctly and certified to AS 1191-2002. Testing data sheets and RMIT Transmission Loss Sound Report available on request. The panels can be easily cut or shaped on site using a circular or hand saw.

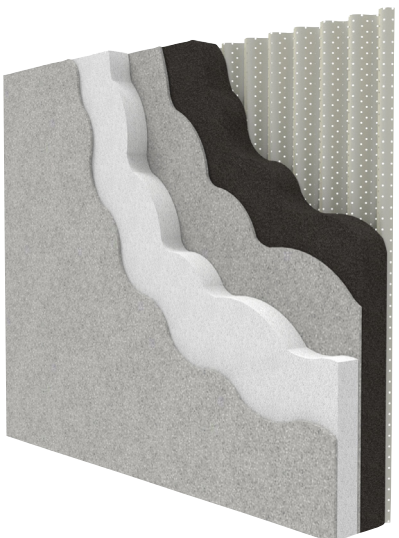


RetainX

Acoustically Rated Reinforced Panel

The RetainX panel is an acoustically rated, reinforced panel, that will fit in seamlessly with many of our wall systems.

We custom make these panels, to reinforce them to retain to your specific needs. Whether it be a freestanding retaining wall, or integrated into a boundary fence, this panel will allow you to create a landscaping feature, and allow our wall systems to be used over a diverse range of environments.



ZorbX

Commercial Noise Absorption Technology

Upgrade your Commercial Wallmark wall, to ensure effective results in reducing noise levels.

The panel is made of complex layers to ensure maximum sound absorption, whilst remaining lightweight and easy to install. The ZorbX panel is suitable for commercial applications such as railways, roadways, commercial sites, mines, car parks, and many more, and can be integrated into our DuneWall system.



Strux

Ultimate Protection Acoustic Barriers

Give your acoustic barrier the ultimate protection from impact, vandals, vehicles or machinery with Wallmark's ultimate Strux upgrade.

Engineered with high impact composite technology, Strux upgrades your barrier wall investment to withstand the hardest knocks, minimising damage and maximising the lifespan of your wall.

With primary applications on busy roadways, railway perimeters, car parks, commercial centres, building sites and walls subject to vandalism, Strux panels can be integrated into the full range of Wallmark Smart Wall Solutions.

	AcoustX	RetainX	ZorbX	Strux
Residential	✓	✓	X	X
Commercial	✓	✓	✓	✓
Noise Reduction	✓	✓	✓	✓
Weather Resistant	✓	✓	✓	✓
Pre-Painted Option	✓	✓	✓	✓
Fire Retardant	✓	✓	✓	✓
Fire Rated	X	X	X	X
Panel Length (m)	2.4 / 3 / 4.2	2.4	2.4 / 3	2.4 / 3 / 4.2
Panel Height (m)	0.9 / 1.2	0.9 / 1.2	0.9 / 1.2	0.9 / 1.2
Panel Thickness (mm)	50 / 75 / 80 / 100	75 / 80 / 100	130	75 / 80 / 100
Reflective	✓	✓	X	✓
Absorptive	X	X	✓	X
Retaining	X	✓	X	X
Impact Resistant	X	X	X	✓

AcoustX

The quiet advantage

Our wall panels are constructed from a very strong composite combination of Fibre Cement sheeting surrounding an Expanded Polystyrene core, creating excellent sound deadening properties.

Wallmark has had a complete wall section tested correctly and certified to AS 1191-2002. Testing data sheets and RMIT Transmission Loss Sound Report available on request. The panels can be easily cut or shaped on site using a circular or hand saw.

Technical Details

- **Mass:** 15kg/m²
- **Thickness:** 75mm
- **Height:** 900 or 1200mm
- **Length:** up to 3000mm
- **Acoustic Rating:** Rw 28
- **Wind Region Rating:**
2.4m Panel - C2
3m Panel - N3

1 The Panel Core (EPS)

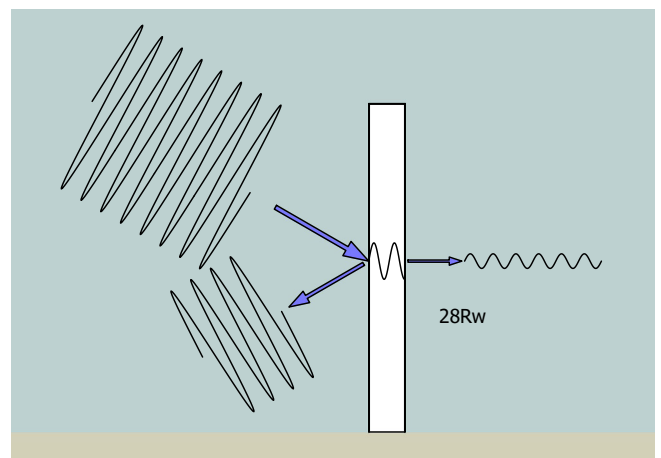
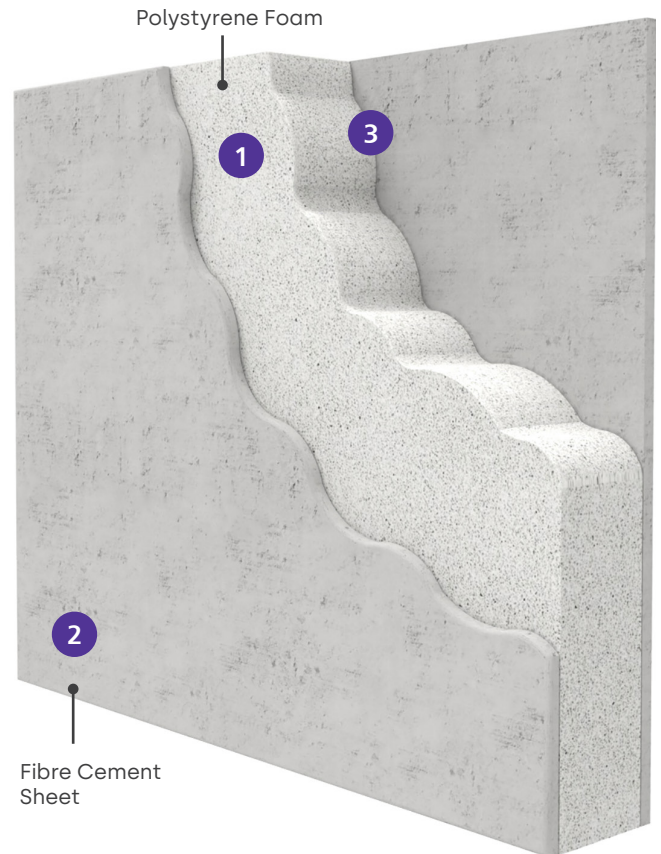
- Superb compressive strength to weight ratio
- Absorbs minimal water - no mould or rotting
- Environmentally friendly, safe and fully recyclable

2 The Panel Outer (FC)

- Fire resistant and non-combustible
- Very strong, impact resistant surface
- Maintenance free - will not breakdown
- High durability exterior grade composition
- Smooth finish - easy to apply paint or render

3 The Panel Bond (PU)

- Full surface contact adhesion
- High grade Polyurethane glue
- 10 year guarantee against failure
- Formulated for the Australian climate





Acoustically Rated Reinforced Panel

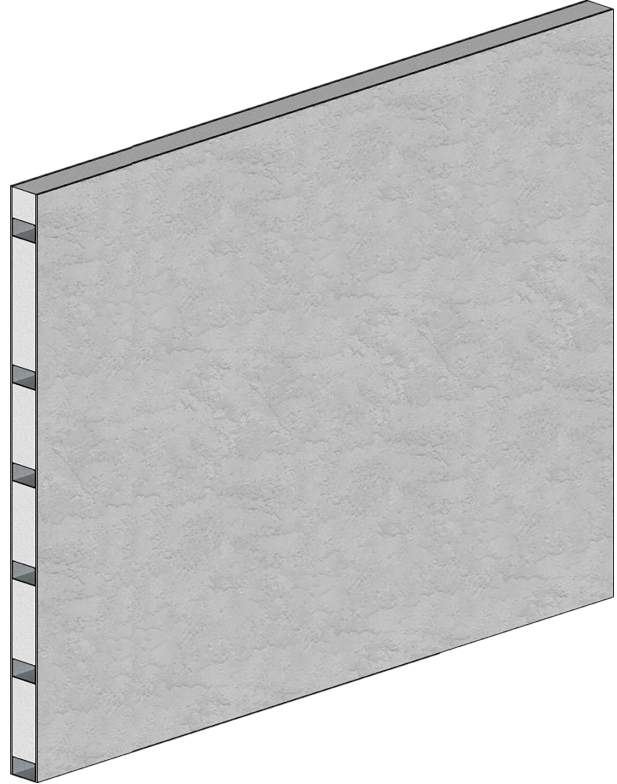
The RetainX panel is an acoustically rated, reinforced panel, that will fit in seamlessly with any of our wall systems.

We custom make these panels, to reinforce them to retain to your specific needs. Whether it be a standalone retaining wall, or integrated into a boundary fence, this panel will allow you to create a landscaping feature, and allow our wall systems to be used over a diverse range of environments.

Advantages

- Can retain soil up to 800mm high
- Panels come in multiple sizes
- Acoustically rated Rw28
- Looks the same as our other panels, so can be incorporated with any other system
- Lightweight
- Easy to install

Engineering and backfilling instructions available.





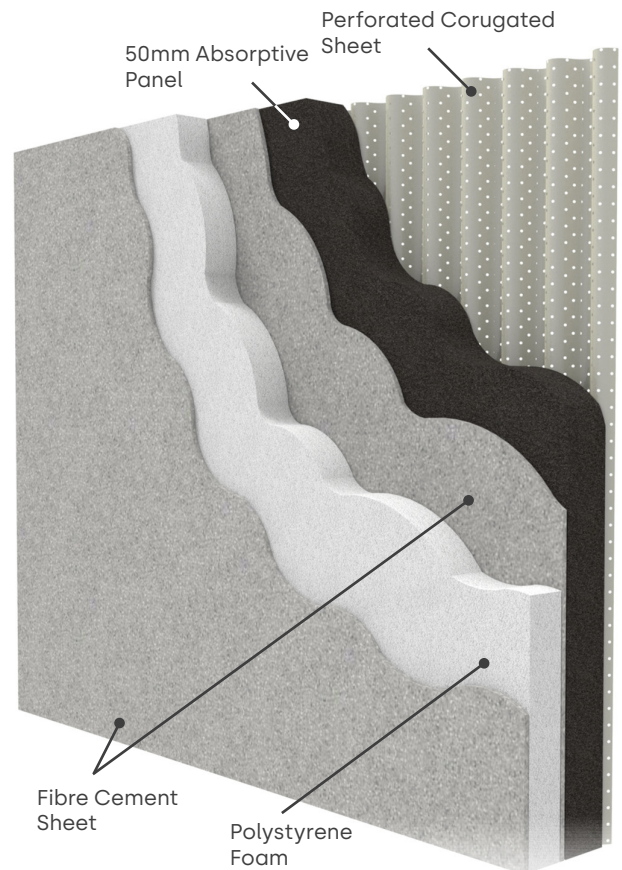
Commercial Noise Absorption Technology

Upgrade your Commercial Wallmark wall, to ensure effective results in reducing noise levels.

The panel is made of complex layers to ensure maximum sound absorption, whilst remaining lightweight and easy to install. The ZorbX panel is suitable for commercial applications such as railways, roadways, commercial sites, mines, car parks, and many more, and can be integrated into any of our Wallmark Smart Wall Solutions.

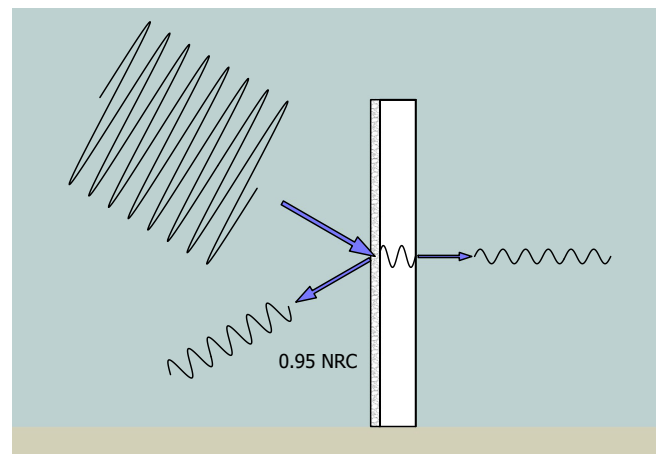
Advantages

- Noise absorption
 - allowing maximum noise reduction. NRC 0.95
- Weather resistance and longevity
- Available in a range of colours
- Lightweight
- Easy to install
- Suitable for most commercial applications
- Seamless aesthetic finish



If you need superior noise reduction for your commercial project, this is the panel to use.

Whilst all of our panels have some noise reduction benefits, we have taken the next step in designing a panel that integrates exceptional noise reduction with many other benefits.





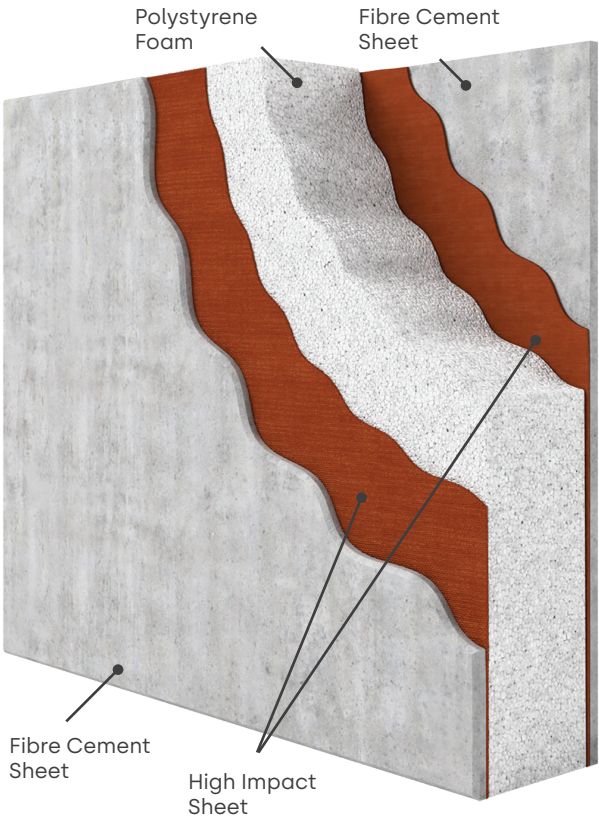
Ultimate Protection Acoustic Barriers

Give your acoustic barrier the ultimate protection from impact, vandals, vehicles or machinery with Wallmark's ultimate Strux upgrade.

Engineered with high impact composite technology, Strux upgrades your barrier wall investment to withstand the hardest knocks, minimising damage and maximising the lifespan of your wall. With primary applications on busy roadways, railway perimeters, car parks, commercial centres, building sites and walls subject to vandalism, Strux panels can be integrated into the full range of Wallmark Smart Wall Solutions.

Advantages

- Cost effective high impact acoustic barriers
- Extreme vandalism protection from physical impacts
- Extend the life of your barrier system
- High fire retardance
- Minimise maintenance and upkeep
- Clean skin aesthetic barrier solution
- Custom height to your specifications
- Single or double panel for extra noise reduction
- Tropical wind rating for storm protection



Superior impact resistance. Superior noise reduction

Protect your property from brutal impacts, vandals, noisy neighbours, busy roadways and commercial noise with Wallmark's smart structural acoustic barrier panelling – Strux.

NOT all acoustic barriers are the same!

If you are serious about protecting your property with the STRUX high impact acoustic barrier solution – tailored and engineered to your individual application, contact the team at Wallmark.



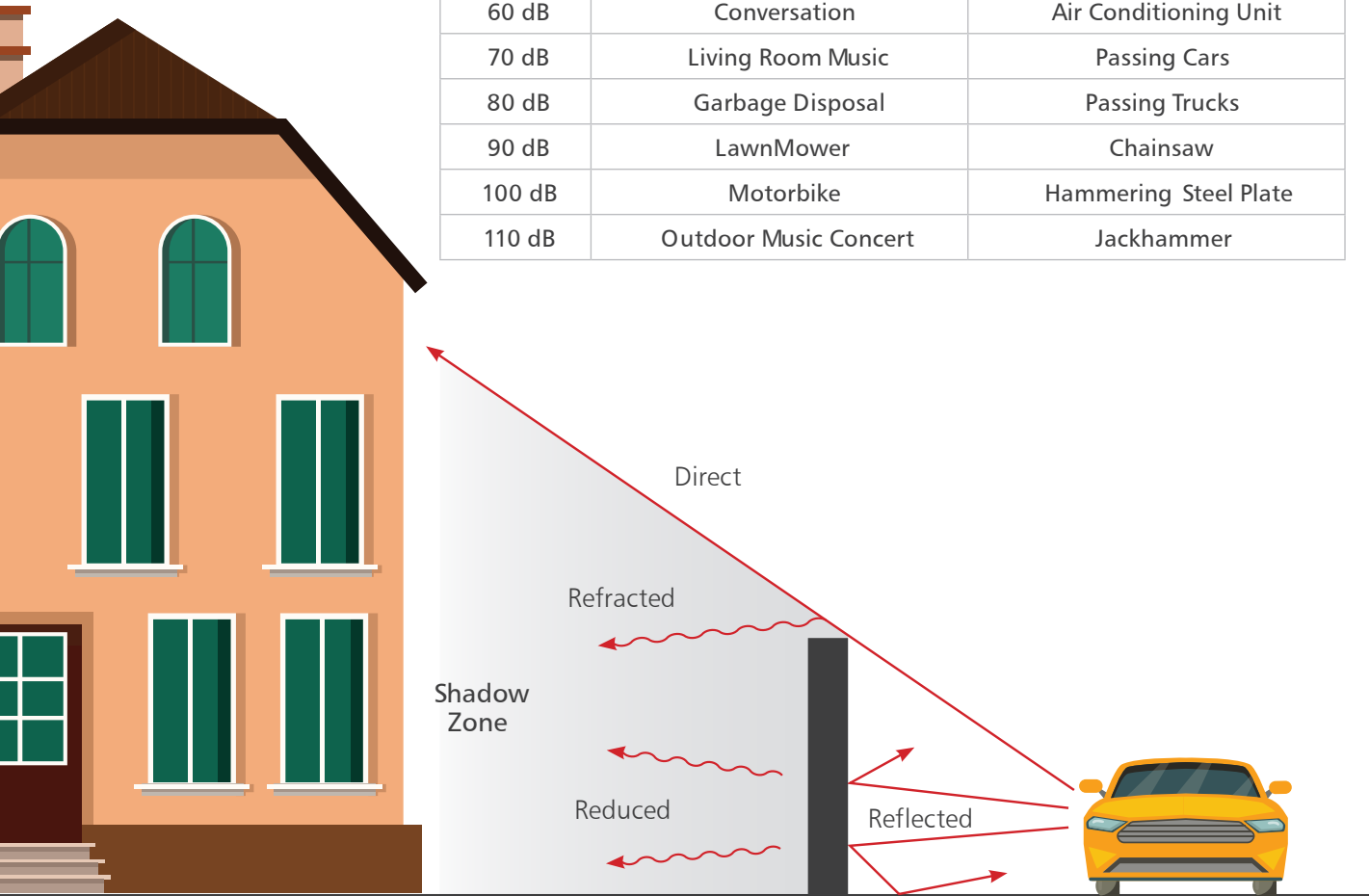
How does noise affect me?

Sound is emitted from thousands of everyday items and people all around us. Consistently loud or intermittent sounds can destroy your quality of life.

Frequency is also a factor with low frequency sounds being difficult to attenuate and high frequencies very effectively blocked. This is measured in Hertz - common noises are such as a stereo bass (40-80Hz), the human voice (300Hz), rock music (600-3000Hz) and a chainsaw (4kHz)

Common Sound Levels

DECIBELS	RESIDENTIAL	COMMERCIAL
60 dB	Conversation	Air Conditioning Unit
70 dB	Living Room Music	Passing Cars
80 dB	Garbage Disposal	Passing Trucks
90 dB	LawnMower	Chainsaw
100 dB	Motorbike	Hammering Steel Plate
110 dB	Outdoor Music Concert	Jackhammer

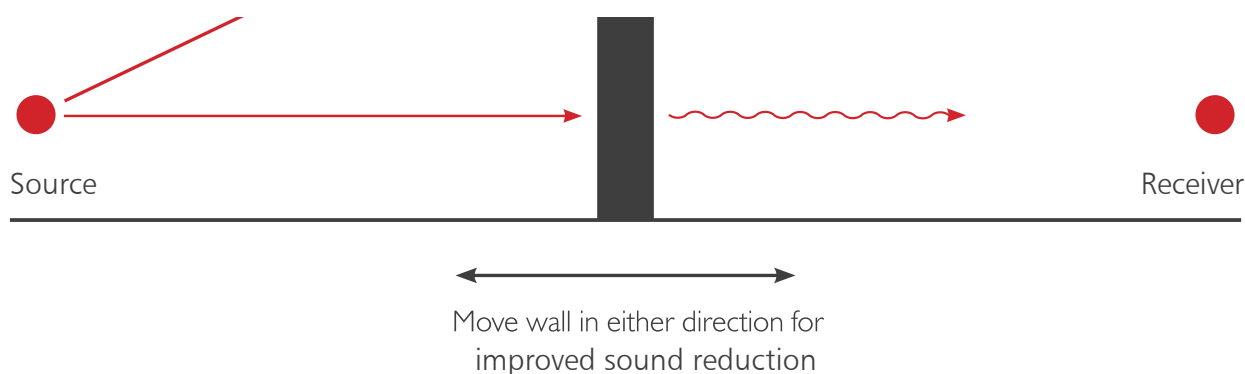


How does a barrier work?

A noise barrier is a solid structure that intercepts and reduces sound within the shadow that it casts. Barrier attenuation in the open field is generally around 10 to 15 decibels due to height and width constraints, sound reflection and flanking around the edges.

The closer a barrier can be to the source or receiver and the higher it is, the more effective it will be. The line of sight between the source and receiver must be blocked completely by the barrier

If a certain decibel level is to be achieved, a qualified acoustician should be used to investigate the site and measure the existing sound to be able to determine what is required and what the actual results might be.



WallMark average noise reduction

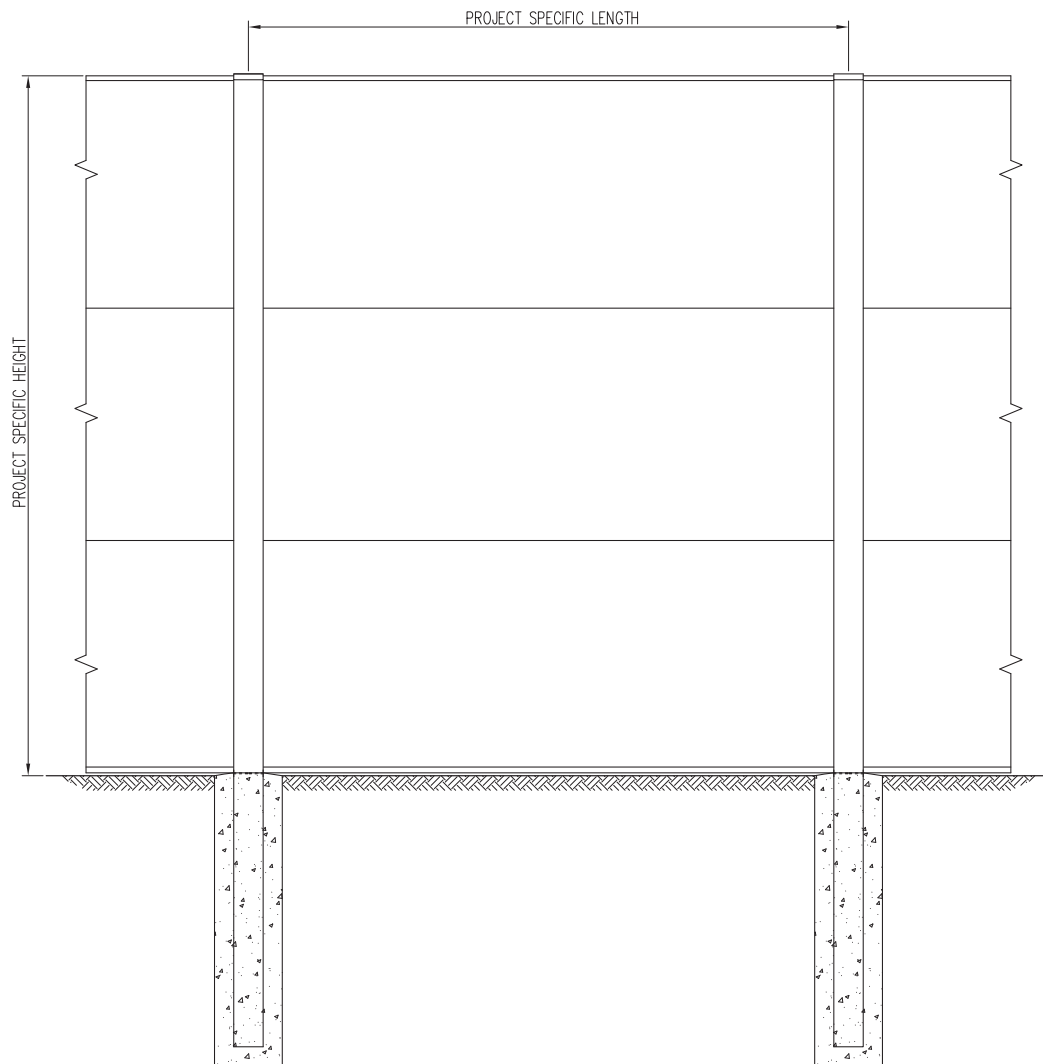
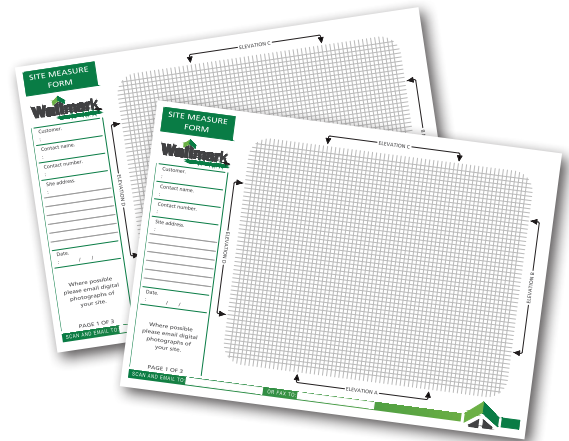
Standard Panel System - 28 Decibels

Double Panel System - 39 Decibels

Testing data sheets, Acousticians Reports available on request.

Pre-engineered to the highest standards

Our range has been engineered to suit a variety of wind regions. This includes wall height, footing sizes and post spacings. Due to the light weight construction of the wall, the footings become narrow piers - easier to dig and using less concrete. No strip footings required. Pre-engineering has been completed on the Dunewall and Evowall posts to retain up to 800mm of soil in various wind regions. Each project can be supplied with a set of detailed drawings to assist in the layout and correct installation with engineering sign-off, if required.



Measuring Guide

Open and print off our "Site Measure Form" from the website.

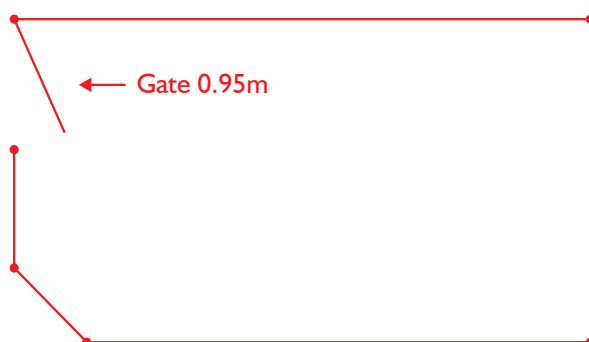
(https://www.wallmark.com.au/basemedia/content/documents/Wallmark_Site_Measure_Form.pdf)

Fill out all details including the customer name and contact number.

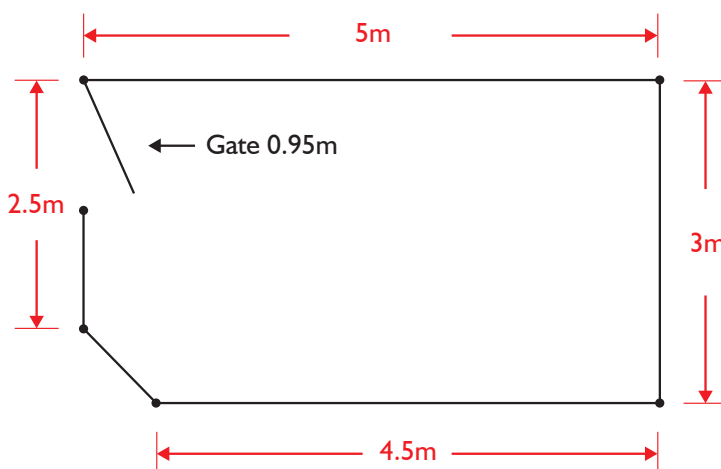
(IMPORTANT - check your local council requirements as to their approved wall heights).

Plan / Top View

Sketch on the above form the plan (or top) view of your site, showing the intended wall line (90 and 45 degree corners only) and any gate positions (state the gate width on your drawing in metres – we only offer 0.95 and 1.5m gate widths - 2 gates may be used to create a double width). Use our below suggestion as a guide.



Measure your maximum overall dimensions and mark these on your plan in metres as shown below. (Please ensure your dimensions are within your legal boundary lines).



The Wallmark Advantage



Innovative Solutions

We offer custom designed solutions for a wide range of industry sectors and applications.



Full Accreditation

Our products have been approved by NATA. Our reflective noise walls also boast an acoustic rating of RW28 and our absorptive walls an NRC rating of 0.95.



Project Collaboration

We manage your project from the design process right through to completion using world class tradespeople and consultants.



Australian Made

Over 2 decades of trust and experience in the Australian construction industry.

At Wallmark, we recognise that when it comes to architectural wall solutions, one design does not fit all. We look forward to working hand in hand with you to solve your acoustic privacy wall challenges.

To find out more about our Smart Acoustic Wall Solutions visit www.wallmark.com.au or call **02 6057 7600**.

